



ALASKA

Alaska: some state symbols



flag



bird: willow ptarmigan



seal



flower: alpine forget-me-not



tree: Sitka spruce

© Encyclopædia Britannica, Inc.

For more information about ALASKA, click here:

<https://alaska.gov/>



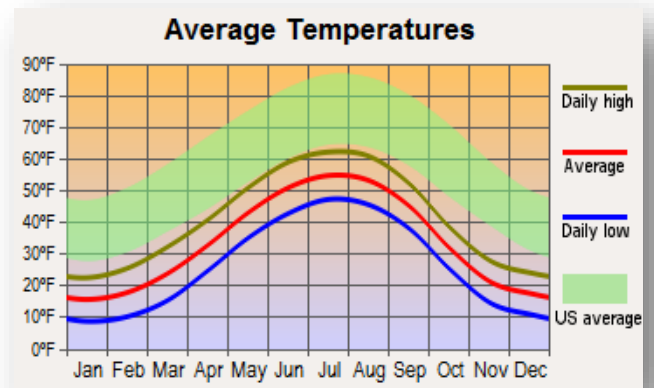
ALASKA – CLIMATE

<https://www.britannica.com/place/Alaska/Climate>

Alaska is known for its variable climate, which is influenced by ocean currents. The western coasts are bathed by the Alaska Current, which carries relatively warm Pacific waters northward and westward along the southern Aleutian Islands. Those warm oceanic waters enter the Bering Sea and then flow eastward along the northern coast of the Aleutians. The mixing of the warm waters with the Bering Sea's cold waters contributes to an atmospheric low-pressure centre known as the Aleutian low. The Arctic coast of Alaska, on the other hand, is bathed by a cold westward-flowing ocean current. Several general climatic zones may be delineated in Alaska, excluding the great mountain ranges. The first zone—comprising southern coastal and southeastern Alaska, the Gulf of Alaska islands, and the Aleutian Islands—has average temperature ranges in the summer of about 40 to 60 °F (4 to 16 °C) and in the winter of about 20 to 40 °F (–7 to 4 °C). Rainfall varies locally from about 60 to 160 inches (1,500 to 4,000 mm). However, the Cordova-Valdez region and parts of the west-central panhandle have the state's highest precipitation, 220 inches (5,600 mm) or more. At Valdez 200 inches (5,100 mm) of snow is not uncommon. The Aleutian Islands are noted for sudden high winds known as williwaws. Alaska's interior, a second climatic zone, has a continental climate influenced in the winter by cold air from northern Canada and Siberia. Average temperatures in the interior range from about 45 to 75 °F (7 to 24 °C) in summer and about 20 to –10 °F (–7 to –23 °C) in winter. It is not uncommon, however, for temperatures to reach into the 90s F (about 34 °C) in summer or drop into the –60s F (about –54 °C) in winter.

MAJOR CITIES:

Far North Alaska – Nome, Brooks Range
 Interior Alaska – Fairbanks
 Southwest Alaska – Alaska Peninsula
 South Central Alaska – Anchorage
 Inside Passage Alaska – Juneau, Ketchikan



CULTURAL ACTIVITIES



Click on these sites for more cultural activity ideas:

- [https://www.tripadvisor.com/Attractions-g60732-Activities-Nome Alaska.html](https://www.tripadvisor.com/Attractions-g60732-Activities-Nome_Alaska.html)
- [https://www.tripadvisor.com/Attraction_Products-g60826-a_contentId.38853879503+761518725-Fairbanks Alaska.html](https://www.tripadvisor.com/Attraction_Products-g60826-a_contentId.38853879503+761518725-Fairbanks_Alaska.html)
- [https://www.tripadvisor.com/Attractions-g31020-Activities-oa0-Juneau Alaska.html](https://www.tripadvisor.com/Attractions-g31020-Activities-oa0-Juneau_Alaska.html)

Bering Land Bridge National Preserve-Nome

<https://www.nps.gov/bela/index.htm>

The Aurora Ice Museum-Fairbanks

[https://www.tripadvisor.com/Attraction_Products-g60826-d2311132-Aurora Ice Museum-Fairbanks Alaska.html](https://www.tripadvisor.com/Attraction_Products-g60826-d2311132-Aurora_Ice_Museum-Fairbanks_Alaska.html)

Large Animal Research Station-Fairbanks

[https://www.tripadvisor.com/Attraction_Review-g60826-d288166-Reviews-Large Animal Research Station-Fairbanks Alaska.html](https://www.tripadvisor.com/Attraction_Review-g60826-d288166-Reviews-Large_Animal_Research_Station-Fairbanks_Alaska.html)

Prince William Sound-Anchorage

[https://www.tripadvisor.com/Attraction_Products-g28923-d105292-Prince William Sound-Alaska.html](https://www.tripadvisor.com/Attraction_Products-g28923-d105292-Prince_William_Sound-Alaska.html)

Tony Knowles Coastal Trail- Anchorage

<https://anchoragecoastaltrail.com/>

Mendenhall Glacier-Juneau

<https://www.fs.usda.gov/detail/tongass/about-forest/offices/?cid=stelprdb5400800>

Juneau-Douglas City Museum-Juneau

<https://juneau.org/library/museum>

Misty Fjords National Monument-Ketchikan

<https://www.visit-ketchikan.com/en/Things-To-Do/Tours-Sightseeing/Misty-Fjords>

GROCERY SHOPPING

Costco	Fred Meyer
Safeway	Super Bear Supermarket

Click on this link for more grocery stores:

<http://supermarketpage.com/state/AK/>



SHOPPING MALLS

Click on this link for a list of shopping malls:

<https://mallseeker.com/alaska-malls.aspx>

PHARMACIES

Kroger	Walgreens
Walmart	CVS Pharmacy
Publix Pharmacy	

Click here to locate other pharmacies:

<https://www.goodrx.com/pharmacy-near-me/all/ak>



POST OFFICES / SHIPPING



Click here for more information:

<https://www.postofficehours.net/state/AK.html>



Click here for more information:

<https://local.fedex.com/en-us/ak>



Click here for more information:

<https://locations.theupsstore.com/ak>

TIME ZONES



© www.timetemperature.com

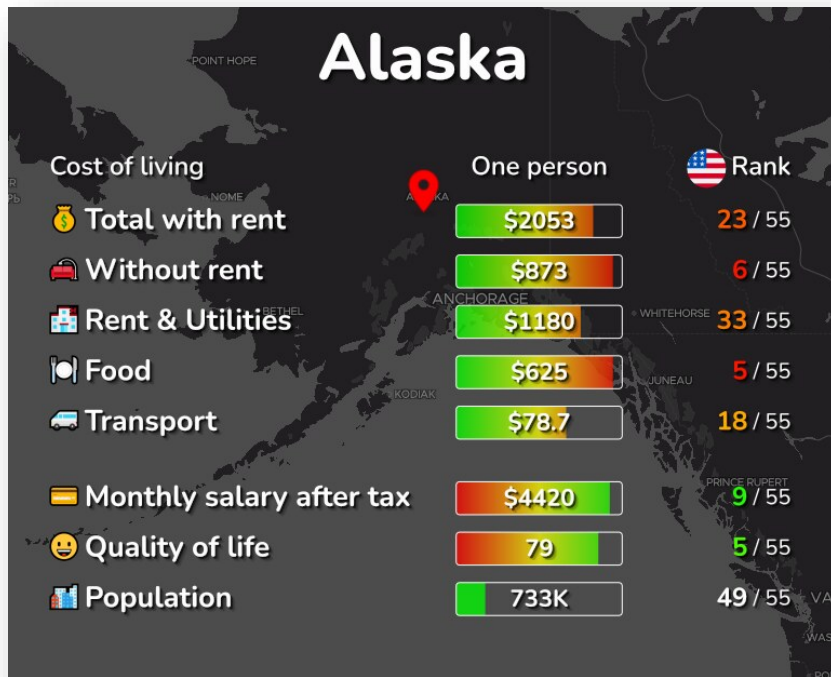
Click here for more information:

https://www.timetemperature.com/tzus/alaska_time_zone.shtml

Alaska Local Time Details

Alaska Time Zone Abbreviations	Alaska Standard Time - is abbreviated as AKST Alaska Daylight Time - is abbreviated as AKDT
Hawaii - Aleutian Abbreviations	Hawaii - Aleutian Standard Time - is abbreviated as HAST Hawaii - Aleutian Daylight Time - is abbreviated as HADT
Alaska Time Zone UTC - GMT Offset	Alaska is GMT/UTC - 9h during Standard Time Alaska is GMT/UTC - 8h during Daylight Saving Time
Hawaii - Aleutian UTC - GMT Offset	Hawaii - Aleutian Time Zone is GMT/UTC - 10h during Standard Time Hawaii - Aleutian Time Zone is GMT/UTC - 9h during Daylight Saving Time
Daylight Saving Time Usage	Alaska does utilize Daylight Saving Time.
Daylight Saving Start Date	Alaska starts Daylight Saving Time on Sunday March 12, 2023 at 2:00 AM local time.
Daylight Saving End Date	Alaska ends Daylight Saving Time on Sunday November 5, 2023 at 2:00 AM local time.

Frequency	Percentage
Never	10%
Often	90%



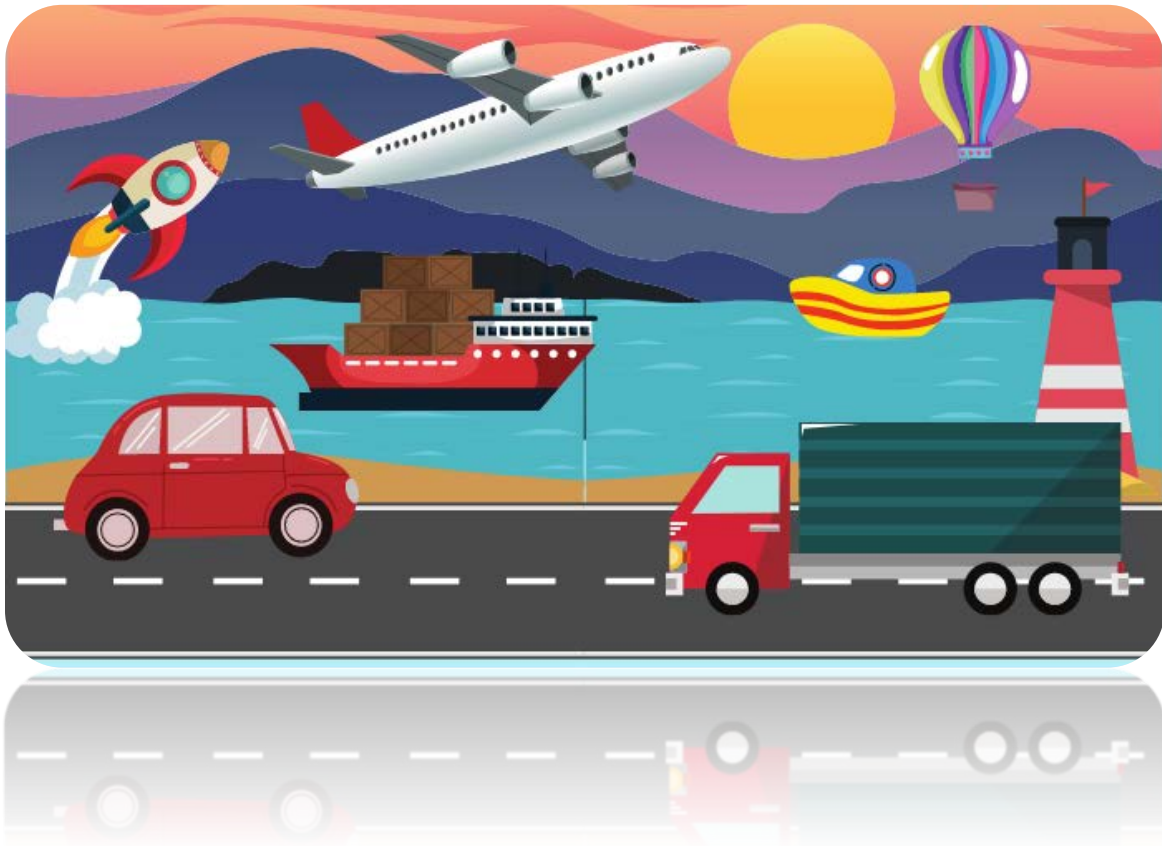
MINIMUM WAGE

State	2023 Minimum Wage	2023 Tipped Wage
AK	\$10.85	\$10.85

An abstract geometric composition featuring several overlapping squares. A large, dark blue square is the central element, tilted at a 45-degree angle. It is surrounded by four green squares, also tilted at 45 degrees, which overlap its corners. A thin, light green horizontal line runs across the lower portion of the image, intersecting the green squares at the bottom. The background is white.

WORKERS' COMPENSATION

<https://labor.alaska.gov/wc/>



TRANSPORTATION SERVICES

Click here for more information:

<https://www.apta.com/research-technical-resources/public-transportation-links/alaska/>

Ride Sharing:

www.uber.com

www.lyft.com