

ARIZONA

Arizona: some state symbols



flag



bird: cactus wren

© Steve Byland/stock
.adobe.com



tree: palo verde

© Lokibaho - Stock/
Getty Images



seal



flower: saguaro cactus blossom

© tonda - Stock/Getty Images

© Encyclopædia Britannica, Inc.

For more information about ARIZONA, click here:

<https://az.gov/>



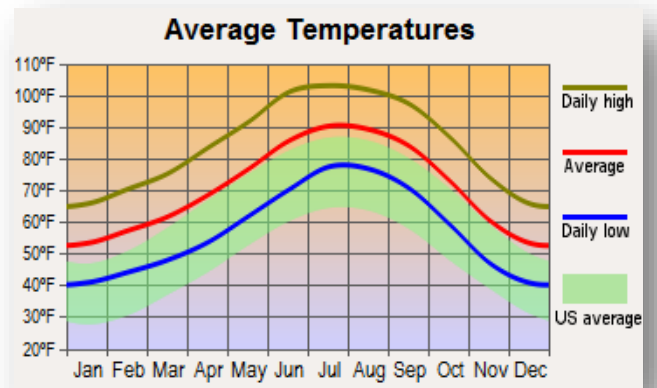
ARIZONA – CLIMATE

<https://www.britannica.com/place/Arizona-state/Climate>

About half of Arizona is semiarid, one-third is arid, and the remainder is humid. The Basin and Range region has the arid and semiarid subtropical climate that attracts most winter visitors and new residents. January days in Phoenix receive more than four-fifths of the possible sunshine and have a mean maximum temperature of 65 °F (18 °C). Occasional light frosts occur at most locations in the Basin and Range region in winter, and some precipitation interrupts the exceedingly dry springs and mildly dry falls. Daily maximum readings average 106 °F (41 °C) in Phoenix in July, and nighttime temperatures drop to an average of 81 °F (27 °C). Moisture-laden air from the Gulf of California and the eastern Pacific Ocean appears in July, bringing more than two months of irregular but sometimes heavy thundershowers that are locally referred to as the “summer monsoon.” Phoenix and Tucson receive about 1 inch (25 mm) of precipitation in July and about 3 inches (75 mm) total throughout the summer months. Winter rains come from the Pacific. The Colorado Plateau has cool to cold winters and a semiarid climate. Average mile-high elevations and direct exposure to polar air masses can produce January mean high and low temperatures as divergent as the 46 °F (8 °C) and 19 °F (– 7 °C), respectively, in Winslow. Year-round temperatures in Flagstaff are generally 30 °F (17 °C) cooler than those of Phoenix. Most of the region receives from 10 to 15 inches (250 to 375 mm) of precipitation annually, with the Mogollon Rim and White Mountains receiving the state’s largest average, 25 inches (625 mm).

MAJOR CITIES:

Central Arizona – Phoenix
Northern Arizona – Sedona
Southern Arizona – Tucson



CULTURAL ACTIVITIES

Click on these sites for more cultural activity ideas:

- <https://www.tripadvisor.com/Attractions-g28924-Activities-Arizona.html>
- <https://www.visitphoenix.com/things-to-do/>
- <https://www.busytourist.com/things-to-do-places-to-visit-arizona/>



The Grand Canyon

<https://www.nps.gov/grca/index.htm>

Antelope Canyon – Page

<https://antelopecanyon.az/>

Horseshoe Bend – Page

<https://horseshoebend.com/>

Phoenix Art Museum – Phoenix

<https://phxart.org/>

Musical Instrument Museum – Phoenix

<https://mim.org/>

Arizona Science Center – Phoenix

<https://www.azscience.org/>

Phoenix Zoo – Phoenix

<https://www.phoenixzoo.org/>

Museum of Contemporary Art – Tucson

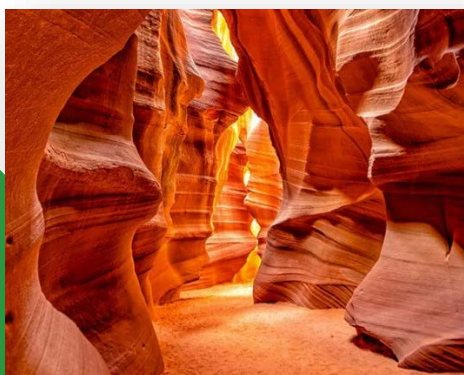
[https://www.visittucson.org/listing/museum-of-contemporary-art-\(moca\)-tucson/22867/](https://www.visittucson.org/listing/museum-of-contemporary-art-(moca)-tucson/22867/)

Pima Air & Space Museum – Tucson

<https://pimaair.org/>

Saguaro National Park – Tucson

<https://www.nps.gov/sagu/index.htm>



GROCERY SHOPPING

Safeway	Bashas
Frys Food Stores	Albertsons
Wal-Mart Supercenter	Costco
Farmland Foods	

Click on this link for more grocery stores:

<http://supermarketpage.com/state/AZ/>



SHOPPING MALLS

Click on this link for a list of shopping malls:

<https://mallseeker.com/arizona-malls.aspx>

PHARMACIES

CVS Pharmacy	Walgreens
Walmart	Frys Pharmacy

Click here to locate other pharmacies:

<https://www.goodrx.com/pharmacy-near-me/all/az>



POST OFFICES / SHIPPING



Click here for more information:

<http://www.postofficehours.net/state/AZ.html>



Click here for more information:

<https://local.fedex.com/en-us/az>

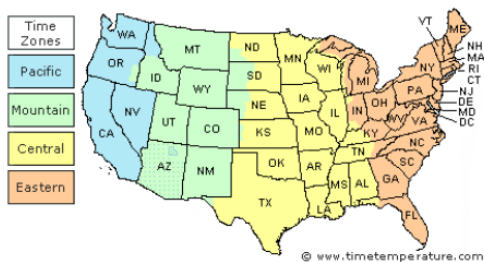


Click here for more information:

<https://locations.theupsstore.com/az>

TIME ZONES

Arizona is officially in the Mountain Time Zone



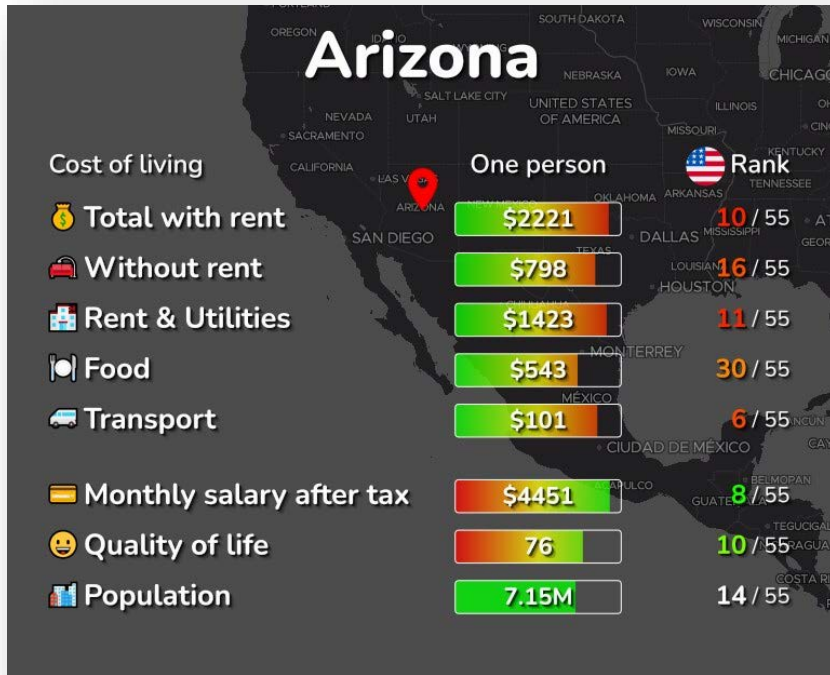
Click here for more information:

https://www.timetemperature.com/tzus/arizona_time_zone.shtml

Arizona Local Time Details

Mountain Time Zone Abbreviations	Mountain Standard Time - is abbreviated as MST Mountain Daylight Time - is abbreviated as MDT
Mountain Time Zone UTC - GMT Offset	Arizona is GMT/UTC - 7h during Standard Time Year Navajo Nation is GMT/UTC - 6h during Daylight Saving Time
Daylight Saving Time Usage	Most of Arizona <u>does not</u> utilize Daylight Saving Time and stays on standard time year round. The Navajo Nation does observe daylight saving time.
Daylight Saving Start Date	The Navajo Nation in Arizona starts Daylight Saving Time on Sunday March 12, 2023 at 2:00 AM local time.
Daylight Saving End Date	The Navajo Nation in Arizona ends Daylight Saving Time on Sunday November 5, 2023 at 2:00 AM local time.

COST OF LIVING IN ARIZONA



Click here for more information:

<https://livingcost.org/cost/united-states/az>



MINIMUM WAGE

State	2023 Minimum Wage	2023 Tipped Wage
AZ	\$13.85	\$3.00

Click here for more information:

<https://www.dol.gov/agencies/whd/minimum-wage/state#az>

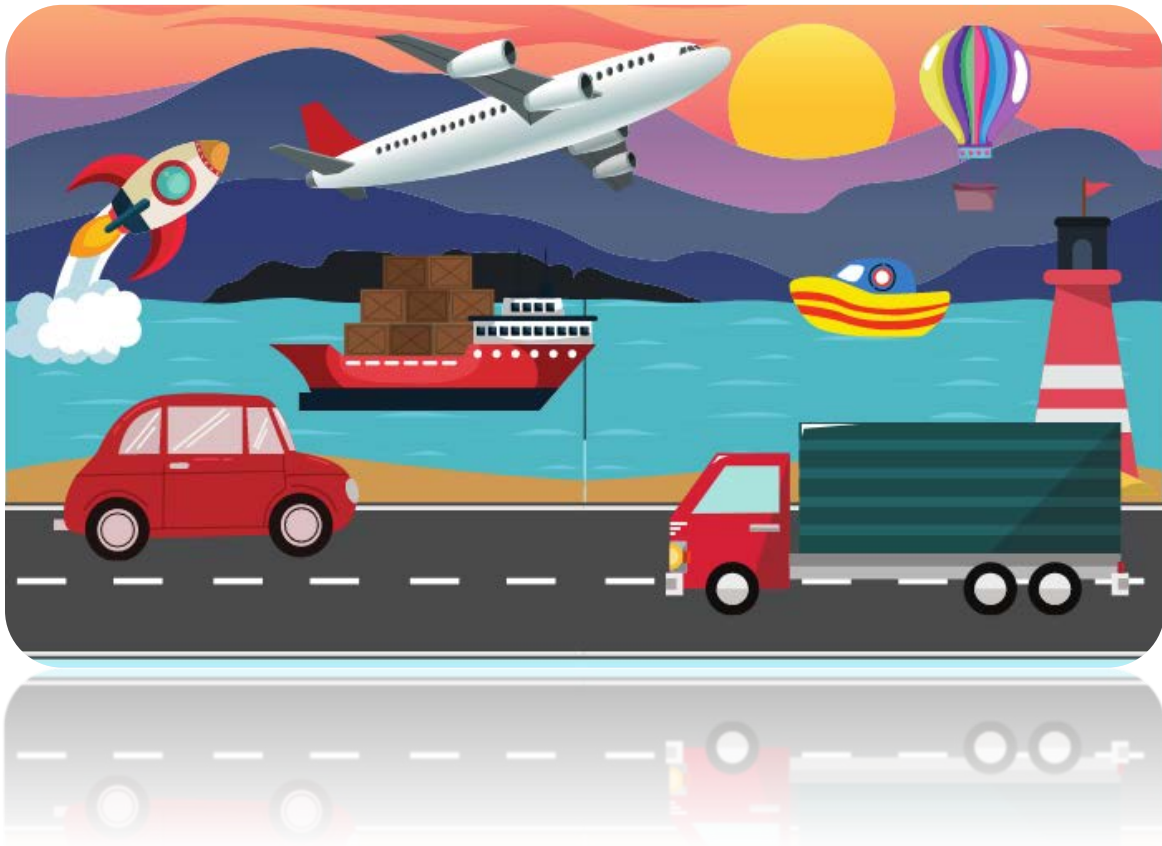
or

<https://www.dol.gov/agencies/whd/state/minimum-wage/tipped#Arizona>

WORKERS' COMPENSATION

Click here for more information:

<https://www.azica.gov/claims-workers-compensation-general-information>



TRANSPORTATION SERVICES

Click here for more information:

<https://www.apta.com/research-technical-resources/public-transportation-links/arizona/>

Ride Sharing:

www.uber.com

www.lyft.com

