

# CONNECTICUT

Connecticut: some state symbols



flag



bird: American robin

NASA



tree: white oak

© Lithomas57/Dreamstime.com



seal



flower: mountain laurel

Arx Fortis

© Encyclopædia Britannica, Inc.

For more information about CONNECTICUT, click here:

<https://portal.ct.gov/>



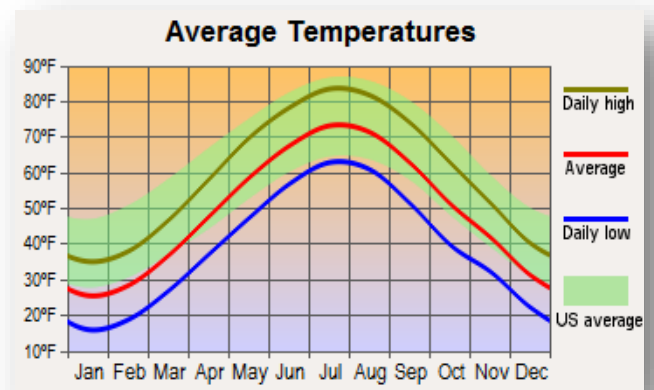
## CONNECTICUT – CLIMATE

<https://www.britannica.com/place/Connecticut>

In Connecticut's moderate climate, the average January temperature is around 26 °F (−3 °C), and most of the state receives about 35 to 45 inches (890 to 1,145 mm) of snow each year. In the northwest, however, the average snowfall exceeds 75 inches (1,900 mm). Snow may remain on the ground until March, but mild spells and rains usually melt it earlier in the year. Summers average between 70 and 75 °F (21 and 24 °C), with occasional heat waves driving daytime temperatures above 90 °F (32 °C). Precipitation, averaging 3 to 4 inches (75 to 100 mm) per month, is evenly distributed. The coastal portions have somewhat warmer winters and cooler summers than does the interior, and the northwestern uplands are high enough to have cooler and longer winters with heavier falls of snow. Occasionally hurricanes have caused flooding and other damage, particularly along the coastline. Tornadoes and severe thunderstorms sometimes occur in the Connecticut River valley. Longtime Hartford resident Mark Twain could very well have meant Connecticut when he coined the now widely appropriated saw, "If you don't like the weather, wait a minute." Changeability is perhaps the state's most marked weather characteristic. Cold waves and heat waves, storms and fine weather can alternate with each other weekly or even daily. Prior to its settlement by Europeans, Connecticut was a forested region. The few man-made clearings, the swampy floodplains, and the tidal marshes accounted for only about 5 percent of the total area. The southern two-thirds was largely oak forest, and the northern border belonged to the northern hardwood region of birch, beech, maple, and hemlock. The woodland that now covers nearly two-thirds of the state more closely resembles a mixed forest.

## MAJOR CITIES:

Central Connecticut – Hartford  
 East Connecticut – Greenwich  
 South Connecticut – New Haven



# CULTURAL ACTIVITIES

Click on these sites for more cultural activity ideas:

- <https://www.visitconnecticut.com/state/>
- <https://www.ctvisit.com/this-weekend>
- <https://www.tripadvisor.com/Attractions-g28928-Activities-Connecticut.html>

**Mark Twain House and Museum – Hartford**

<https://gardenofgods.com/>

**Yale University Art Gallery – New Haven**

<https://artgallery.yale.edu/>

**Mystic Aquarium – Mystic**

<https://www.mysticaquarium.org/>

**Mystic Seaport Museum – Mystic**

<https://www.mysticseaport.org/>

**Gillette Castle State Park – East Haddam**

<https://portal.ct.gov/DEEP/State-Parks/Parks/Gillette-Castle-State-Park>

**Elizabeth Park Conservancy – West Hartford**

<http://www.elizabethparkct.org/>

**Hammonasset Beach State Park – Madison**

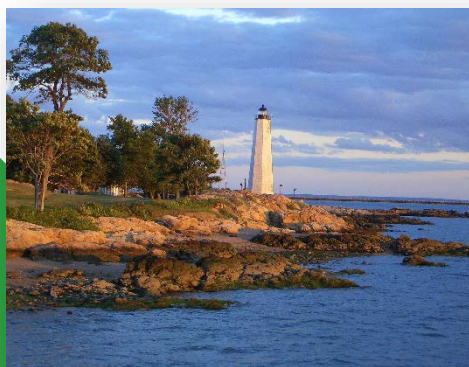
<https://portal.ct.gov/DEEP/State-Parks/Parks/Hammonasset-Beach-State-Park>

**New England Air Museum – East Granby**

<https://neam.org/>

**The Bruce Museum – Greenwich**

<https://brucemuseum.org/>





## GROCERY SHOPPING

Stop & Shop	ALDI
Big Y Foods	Shaws
Wal-Mart Supercenter	A&P Food Stores

Click on this link for more grocery stores:

<http://supermarketpage.com/state/CT/>



## SHOPPING MALLS

Click on this link for a list of shopping malls:

<https://mallseeker.com/connecticut-malls.aspx>

## PHARMACIES

Walgreens	Rite Aid
Walmart	CVS Pharmacy
Stop n Shop	

Click here to locate other pharmacies:

<https://www.goodrx.com/pharmacy-near-me/all/ct>



# POST OFFICES / SHIPPING



Click here for more information:

<https://www.postofficehours.net/state/CT.html>



Click here for more information:

<https://local.fedex.com/en-us/ct>

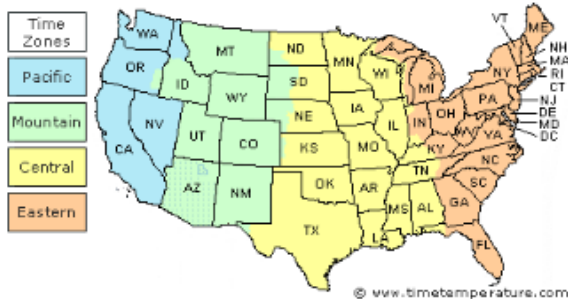


Click here for more information:

<https://locations.theupsstore.com/ct>

## TIME ZONES

Connecticut is officially in the Eastern Time Zone



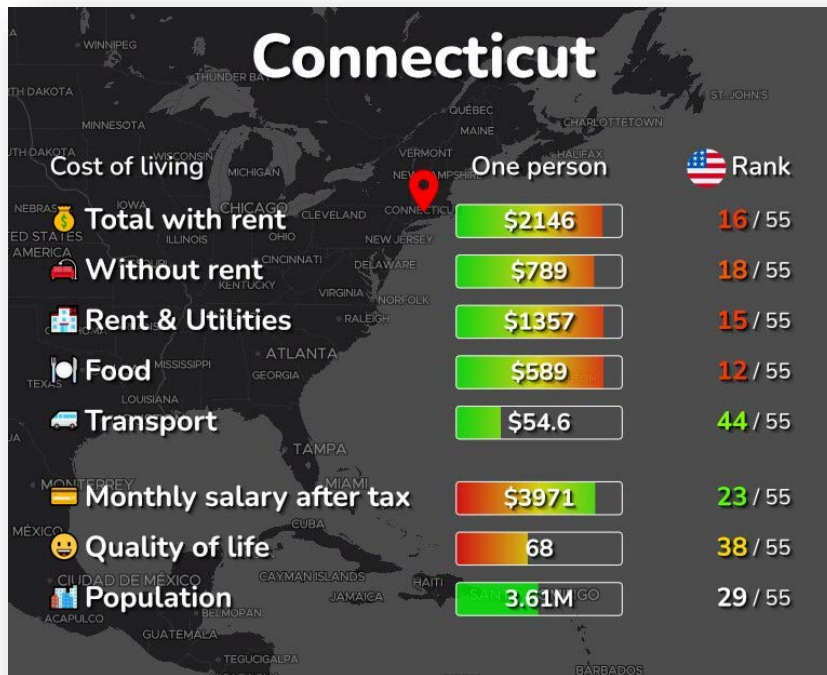
Click here for more information:

<https://www.timetemperature.com/tzus/connecticut-time-zone.shtml>

### Connecticut Local Time Details

Time Zone Abbreviations	Eastern Standard Time - is abbreviated as EST Eastern Daylight Time - is abbreviated as EDT
UTC - GMT Offset	Connecticut is GMT/UTC - 5h during Standard Time Connecticut is GMT/UTC - 4h during Daylight Saving Time
Daylight Saving Time Usage	Connecticut does utilize Daylight Saving Time.
Daylight Saving Start Date	Connecticut starts Daylight Saving Time on Sunday March 12, 2023 at 2:00 AM local time.
Daylight Saving End Date	Connecticut ends Daylight Saving Time on Sunday November 5, 2023 at 2:00 AM local time.

# COST OF LIVING IN CONNECTICUT



Click here for more information:

<https://livingcost.org/cost/united-states/ct>



## MINIMUM WAGE

State	2023 Minimum Wage	2023 Tipped Wage
CT	\$14.00	\$6.38 (Hotel, Restaurant) \$8.23 (Bartenders)

Click here for more information:

<https://www.dol.gov/agencies/whd/minimum-wage/state#ct>

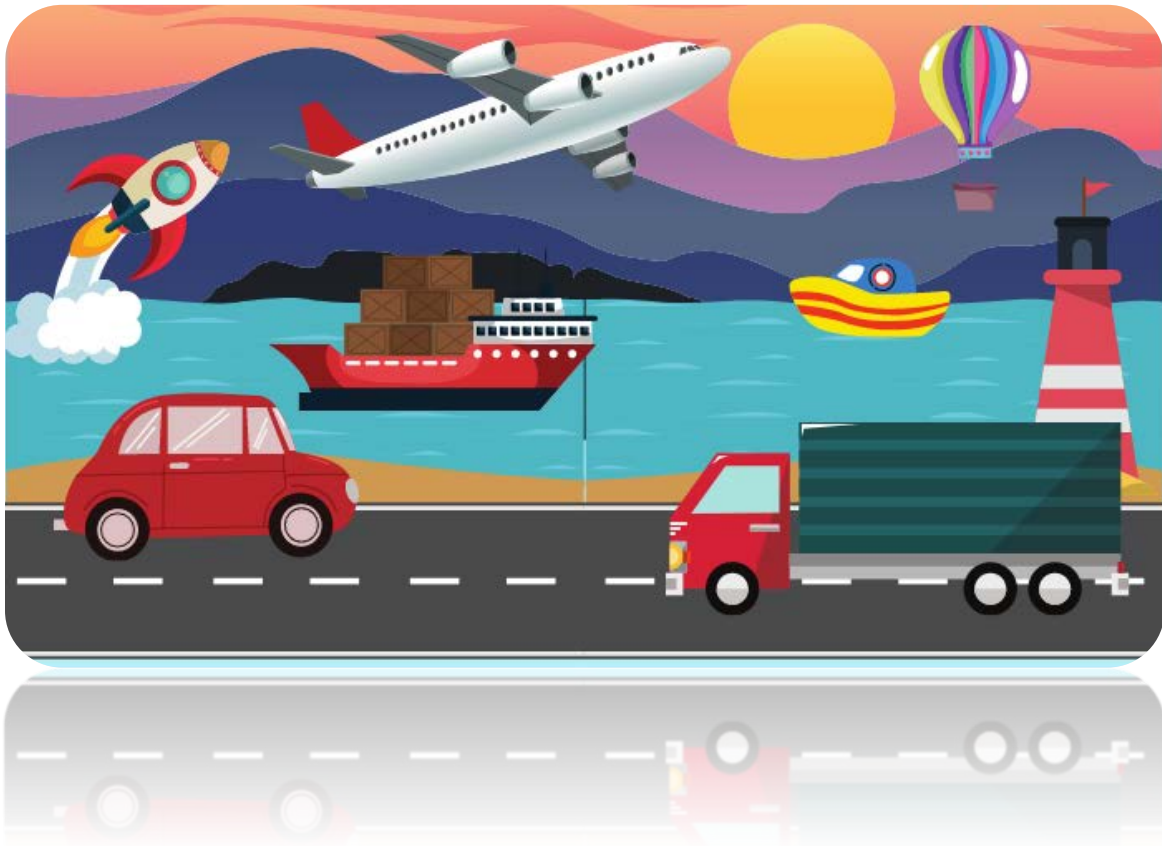
or

<https://www.dol.gov/agencies/whd/state/minimum-wage/tipped#Connecticut>

## WORKERS' COMPENSATION

Click here for more information:

<https://portal.ct.gov/wcc>



## TRANSPORTATION SERVICES

**Click here for more information:**

<https://www.apta.com/research-technical-resources/public-transportation-links/connecticut/>

**Ride Sharing:**

[www.uber.com](http://www.uber.com)

[www.lyft.com](http://www.lyft.com)