

# DELAWARE

## Delaware: some state symbols



flag



bird: blue hen



seal



flower: peach blossom



tree: American holly

© Encyclopædia Britannica, Inc.

For more information about DELAWARE, click here:

<https://delaware.gov/>



## DELAWARE – CLIMATE

<https://www.britannica.com/place/Delaware-state>

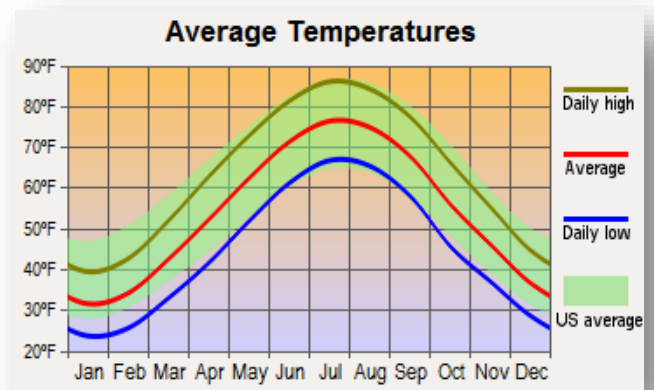
The climate of Delaware is humid and temperate. The average daily temperature at New Castle Airport in northern Delaware is 54 °F (12 °C), varying from an average high of 86 °F (30 °C) in July to an average low of 23 °F (–5 °C) in January. Temperatures in southern Delaware usually run about two degrees higher than these figures. August, which has the second warmest temperatures after July, is also the rainiest month, with an average precipitation of about 5.5 inches (140 mm), whereas February has the least precipitation, an average of about 3 inches (75 mm). The annual average precipitation is nearly 45 inches (1,140 mm). Delaware is a transition zone between plants typical of Pennsylvania and New York and those common to coastal Maryland and Virginia. Hardwoods are characteristic in the north, but pines become mixed with hardwoods in the south. Deer, foxes, raccoons, opossums, and muskrats are common. Beaches and marshes are a winter refuge for many wildfowl, as well as a stop on the migratory paths of such birds as sandpipers. Delaware, located mainly within the Atlantic Coastal Plain, is second only to Florida for having the lowest average elevation. A long sand beach forms the state's oceanfront, stretching from the border with Maryland, at Fenwick Island, north to Cape Henlopen, at the mouth of Delaware Bay. Only one major break, Indian River Inlet, occurs along the 23-mile (37-km) length of the beach. Much of the beach is a low bar between the ocean and a series of lagoons or shallow bays, but at Bethany Beach, near the southern boundary, and again at Rehoboth Beach, near the northern end, the mainland reaches directly to the ocean.

## MAJOR CITIES:

Central Delaware – Dover

North Delaware – Wilmington

South Delaware – Georgetown



# CULTURAL ACTIVITIES

Click on these sites for more cultural activity ideas:

- <https://www.tripadvisor.com/Attractions-g28929-Activities-Delaware.html>
- <https://www.atlasobscura.com/things-to-do/delaware>
- <https://www.visitdelaware.com/things-to-do/top-things-to-do>

**Bethany Beach – Dover**

<https://www.visitdelaware.com/beaches/bethany-beach>

**Winterthur Museum, Garden & Library – Winterthur**

<https://www.winterthur.org/>

**Funland Rehoboth – Rehoboth Beach**

<https://funlandrehoboth.com/contact-us>

**Nemours Mansion – Wilmington**

<http://nemoursestate.org/>

**Brandywine Zoo – Wilmington**

<https://brandywinezoo.org/>

**Delaware Art Museum – Wilmington**

<https://delart.org/>

**Hagley Museum – Wilmington**

<https://www.hagley.org/>

**Air Mobility Command Museum – Dover**

<https://amcmuseum.org/>

**Cape Henlopen State Park – Lewes**

<https://destateparks.com/Beaches/CapeHenlopen>





# GROCERY SHOPPING

Food Lion	Wal-Mart Supercenter
Acme Markets	Schwan's Fine Food
Shore Stop Food Stores	Harris Teeter

Click on this link for more grocery stores in Delaware:

<http://supermarketpage.com/state/DE/>



# SHOPPING MALLS

Click on this link for a list of shopping malls in Delaware:

<https://mallseeker.com/delaware-malls.aspx>

# PHARMACIES

Walgreens	Rite Aid
Walmart	CVS Pharmacy
Giant Pharmacy	

Click here to locate other pharmacies in Delaware:

<https://www.goodrx.com/pharmacy-near-me/all/de>



## POST OFFICES / SHIPPING



Click here for more information:

<https://www.postofficehours.net/state/DE.html>



Click here for more information:

<https://local.fedex.com/en-us/de>

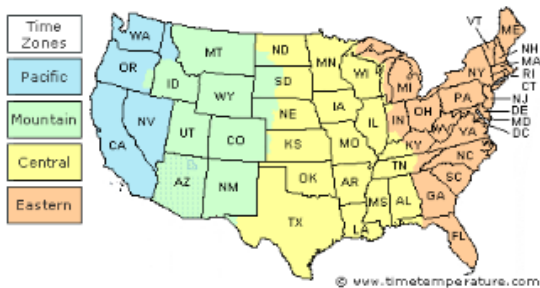


Click here for more information:

<https://locations.theupsstore.com/de>

## TIME ZONES

Delaware is officially in the Eastern Time Zone



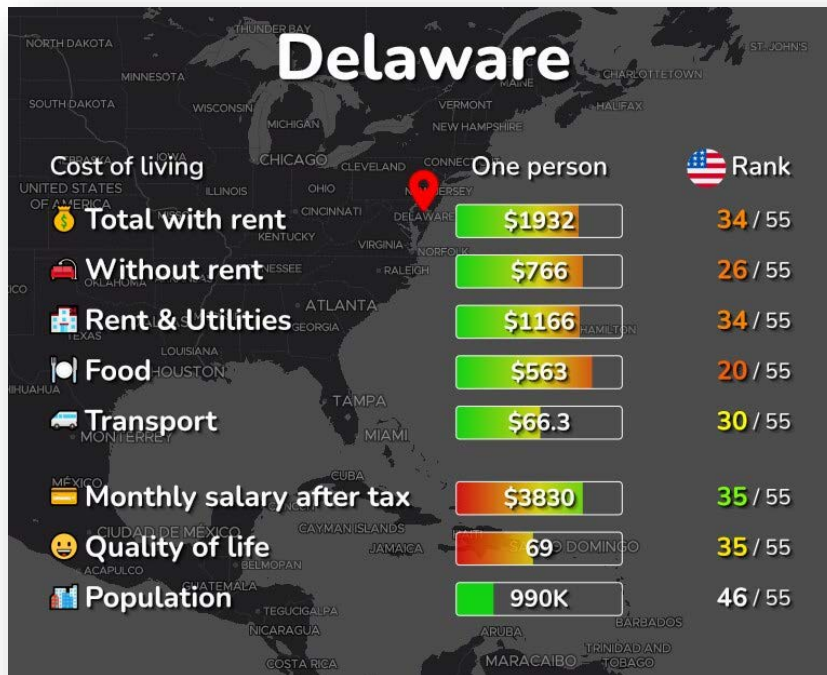
Click here for more information:

[https://www.timetemperature.com/tzus/delaware\\_time\\_zone.shtml](https://www.timetemperature.com/tzus/delaware_time_zone.shtml)

### Delaware Local Time Details

Time Zone Abbreviations	Eastern Standard Time - is abbreviated as EST Eastern Daylight Time - is abbreviated as EDT
UTC - GMT Offset	Delaware is GMT/UTC - 5h during Standard Time Delaware is GMT/UTC - 4h during Daylight Saving Time
Daylight Saving Time Usage	Delaware does utilize Daylight Saving Time.
Daylight Saving Start Date	Delaware starts Daylight Saving Time on Sunday March 12, 2023 at 2:00 AM local time.
Daylight Saving End Date	Delaware ends Daylight Saving Time on Sunday November 5, 2023 at 2:00 AM local time.

# COST OF LIVING IN DELAWARE



Click here for more information:

<https://livingcost.org/cost/united-states/de>



## MINIMUM WAGE

State	2023 Minimum Wage	2023 Tipped Wage
DE	\$11.75	\$2.23

Click here for more information:

<https://www.dol.gov/agencies/whd/minimum-wage/state#de>

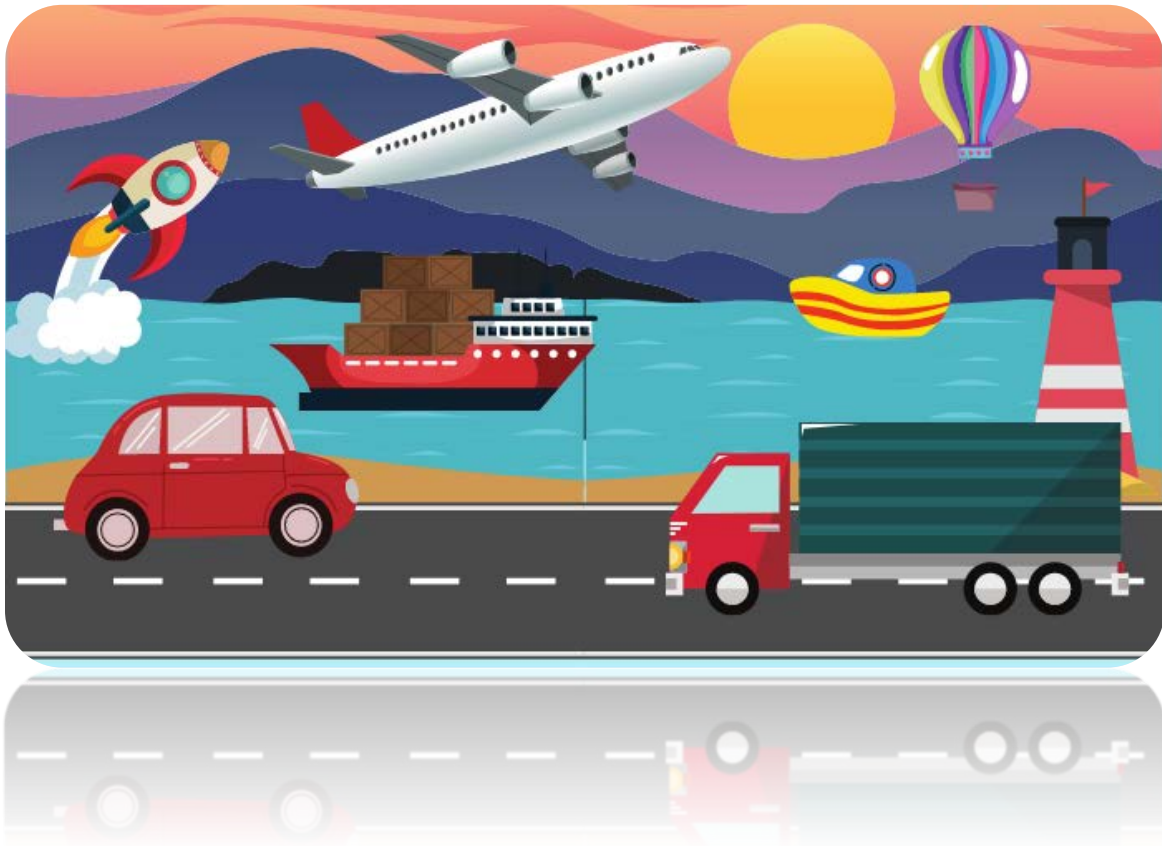
or

<https://www.dol.gov/agencies/whd/state/minimum-wage/tipped#Delaware>

## WORKERS' COMPENSATION

Click here for more information:

<https://labor.delaware.gov/divisions/industrial-affairs/workers-comp/>



## TRANSPORTATION SERVICES

**Click here for more information:**

<https://www.apta.com/research-technical-resources/public-transportation-links/delaware/>

**Ride Sharing:**

[www.uber.com](http://www.uber.com)

[www.lyft.com](http://www.lyft.com)