

# IDAHO

## Idaho: some state symbols



flag



bird: mountain bluebird



seal



flower: Lewis's mock orange



tree: western white pine

© Encyclopædia Britannica, Inc.

For more information about IDAHO, click here:

<https://www.idaho.gov/>



## IDAHO – CLIMATE

<https://www.britannica.com/place/Idaho-state/Climate>

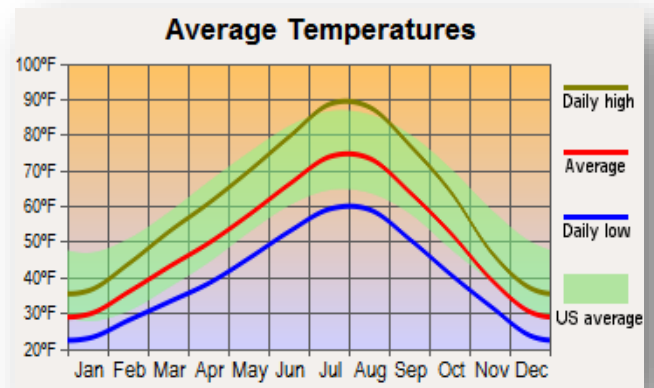
Idaho's mountainous topography produces an extremely diverse climate pattern. In general, as elevation increases, precipitation increases and mean temperatures drop. On a different scale, the high mountains in eastern Idaho tend to hold back the cold winter air that predominates in Montana and Wyoming, giving the state higher mean temperatures than are found at the same latitude and elevation in those states and in more mid-continental locations. Mean January temperatures range from the upper 10s F (about  $-8^{\circ}\text{C}$ ) at Deadwood Dam in the central mountains to the low 30s F (about  $-1^{\circ}\text{C}$ ) at Orofino in the central panhandle. July temperatures range from about  $60^{\circ}\text{F}$  ( $16^{\circ}\text{C}$ ) at Deadwood Dam to the upper 70s F (about  $25^{\circ}\text{C}$ ) at Grand View in the southwest. Idaho is situated in the rain shadow of mountains to the west in Washington and Oregon, and only the higher elevations receive adequate amounts of precipitation. Most of the Snake River plateau receives less than 10 inches (250 mm) of precipitation annually, making it the driest part of the state. At the other extreme, large sections of the Northern Rockies record annual totals of more than 50 inches (1,250 mm) of precipitation, much of it in the form of snow. Idaho is one of the few states in which grizzly bears and gray wolves roam free, though in small numbers. Grays Lake National Wildlife Refuge, in the southeastern corner of the state, was the site of a long-term attempt to reintroduce the whooping crane, one of North America's endangered birds, and to use sandhill cranes as surrogate parents to further increase the birds' population size and range. More than a dozen other endangered plant and animal species occur in Idaho, including MacFarlane's four o'clock (*Mirabilis macfarlanei*) and the woodland caribou.

## MAJOR CITIES:

North Idaho – Coeur d'Alene

Central Idaho – Boise

South Idaho – Idaho Falls



# CULTURAL ACTIVITIES

Click on these sites for more cultural activity ideas:

- <https://www.tripadvisor.com/Attractions-g28933-Activities-Idaho.html>
- <https://visitidaho.org/>
- <https://www.atlasobscura.com/things-to-do/idaho>

**Idaho Potato Museum – Blackfoot**

<https://idahopotatomuseum.com/>

**Lionhead Natural Water Slides – Coolin**

<https://boisedev.com/news/2021/09/23/lions-head-creek/>

**The Black Cliffs – Boise**

<https://www.atlasobscura.com/places/the-black-cliffs-boise-idaho>

**Silverwood Theme Park – Athol**

<https://www.silverwoodthemepark.com/>

**Lava Hot Springs – Lava Hot Springs**

<https://lavahotsprings.com/>

**Shoshone Falls – Twin Falls**

<https://www.tfid.org/309/Shoshone-Falls>

**Idaho Botanical Gardens – Boise**

<https://www.idahobotanicalgarden.org/>

**Museum of Idaho – Idaho Falls**

<https://museumofidaho.org/>

**Perrine Bridge – Twin Falls**

<https://visitsouthidaho.com/guided-canyon-rim-trail/locations/perrine-bridge/>





## GROCERY SHOPPING

Albertsons	Fred Meyer
Wal-Mart Supercenter	Costco
Basic American Foods	Safeway

Click on this link for more grocery stores in Idaho:

<http://supermarketpage.com/state/ID/>



## SHOPPING MALLS

Click on this link for a list of shopping malls in Idaho:

<https://mallseeker.com/idaho-malls.aspx>

## PHARMACIES

Walgreens	Rite Aid
Walmart	Fred Meyer Pharmacy
Albertsons	

Click here to locate other pharmacies in Idaho:

<https://www.goodrx.com/pharmacy-near-me/all/id>



## POST OFFICES / SHIPPING



Click here for more information:

<https://www.postofficehours.net/state/ID.html>



Click here for more information:

<https://local.fedex.com/en-us/id>



Click here for more information:

<https://locations.theupsstore.com/id>

## TIME ZONES

Pacific  
Time Zone

Mountain  
Time Zone

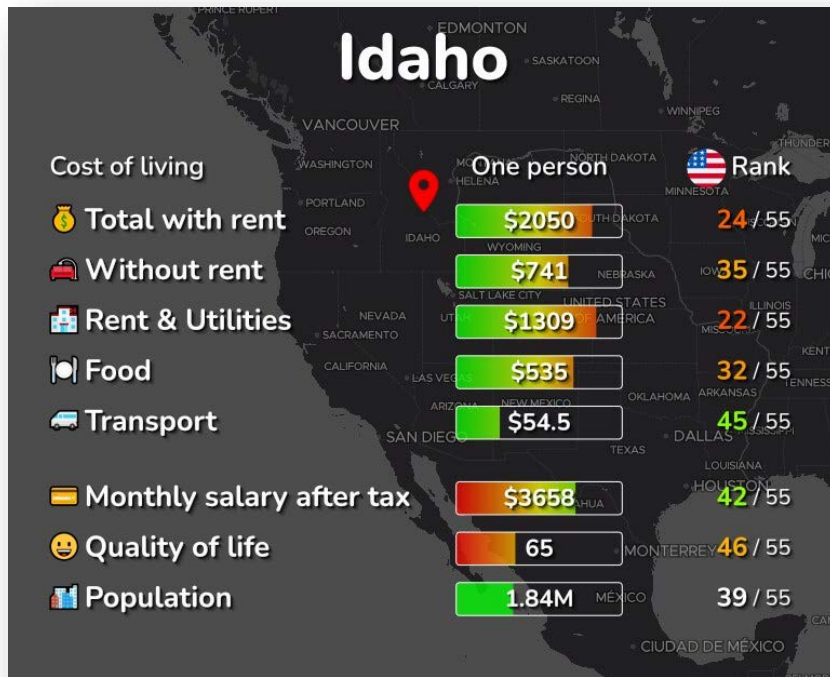


Click here for more information:

[https://www.timetemperature.com/tzus/idaho\\_time\\_zone.shtml](https://www.timetemperature.com/tzus/idaho_time_zone.shtml)

Idaho Local Time Details	
Mountain Time Zone Abbreviations	Mountain Standard Time - is abbreviated as MST Mountain Daylight Time - is abbreviated as MDT
Pacific Time Zone Abbreviations	Pacific Standard Time - is abbreviated as PST Pacific Daylight Time - is abbreviated as PDT
Mountain Time Zone UTC - GMT Offset	Mountain Time Zone is GMT/UTC - 7h during Standard Time Mountain Time Zone is GMT/UTC - 6h during Daylight Saving Time
Mountain Time Zone UTC - GMT Offset	Pacific Time Zone is GMT/UTC - 8h during Standard Time Pacific Time Zone is GMT/UTC - 7h during Daylight Saving Time
Daylight Saving Time Usage	Idaho does utilize Daylight Saving Time.
Daylight Saving Start Date	Idaho starts Daylight Saving Time on Sunday March 12, 2023 at 2:00 AM local time.
Daylight Saving End Date	Idaho ends Daylight Saving Time on Sunday November 5, 2023 at 2:00 AM local time.

## COST OF LIVING IN IDAHO



Click here for more information:

<https://livingcost.org/cost/united-states/id>



## MINIMUM WAGE

State	2023 Minimum Wage	2023 Tipped Wage
ID	\$7.25	\$3.35

Click here for more information:

<https://www.dol.gov/agencies/whd/minimum-wage/state#id>

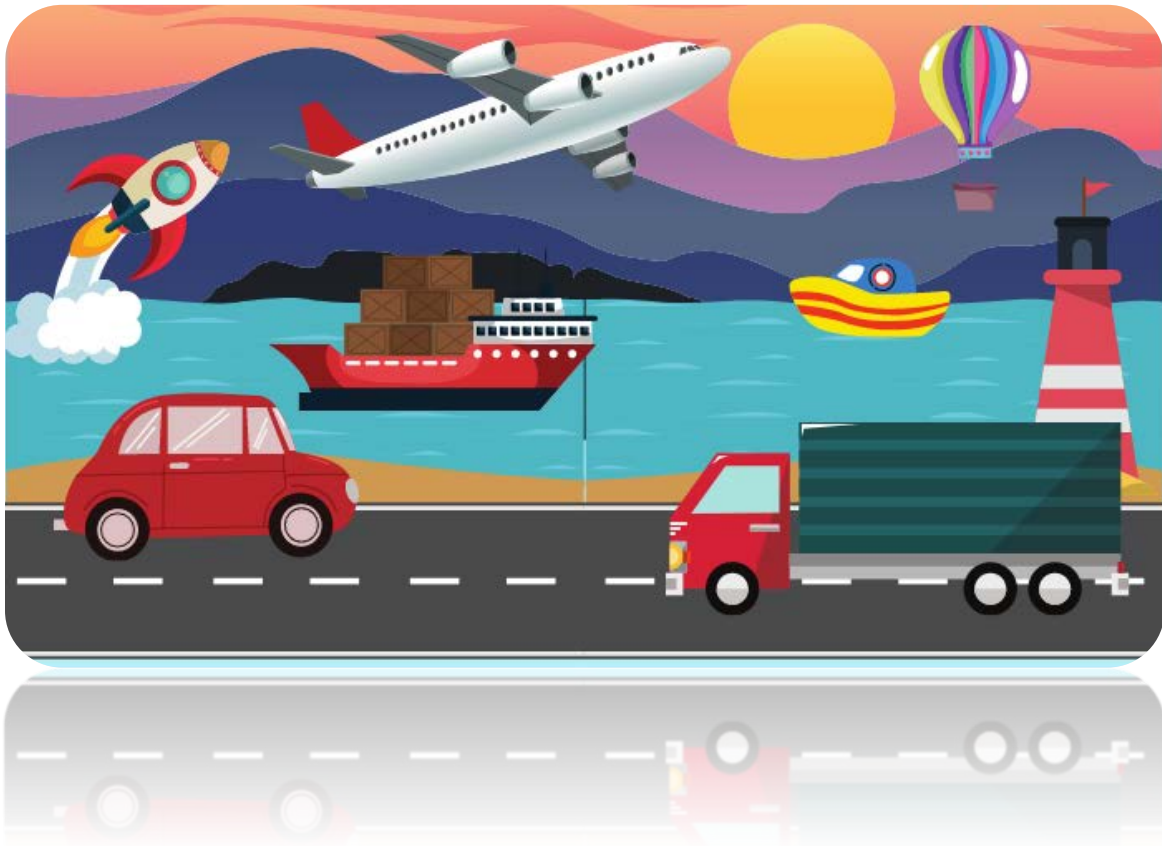
or

<https://www.dol.gov/agencies/whd/state/minimum-wage/tipped#Idaho>

## WORKERS' COMPENSATION

Click here for more information:

<https://dhr.idaho.gov/workers-compensation/>



## TRANSPORTATION SERVICES

**Click here for more information:**

<https://www.apta.com/research-technical-resources/public-transportation-links/idaho/>

**Ride Sharing:**

[www.uber.com](http://www.uber.com)

[www.lyft.com](http://www.lyft.com)

