

ILLINOIS

Illinois: some state symbols



flag



bird: northern cardinal

© Steve Byland/stock
.adobe.com



tree: white oak

© Lthomas57/Dreamstime.com



seal



flower: violet

© Nicholas A. Tonelli (CC BY 2.0)

© Encyclopædia Britannica, Inc.

For more information about ILLINOIS, click here:

<https://www.illinois.gov/>



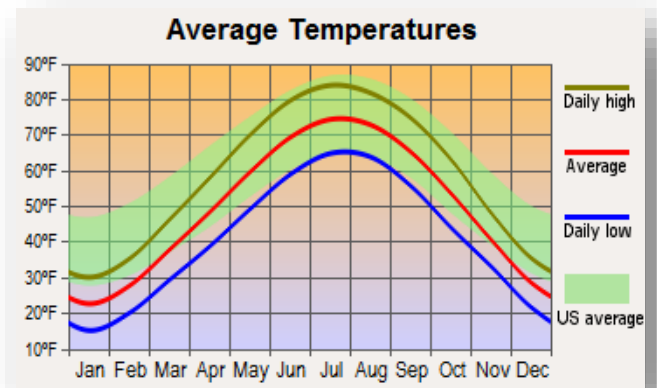
ILLINOIS – CLIMATE

<https://www.britannica.com/place/Illinois-state#ref78635>

Because of its geographic position and its long north-south axis, Illinois experiences wide regional variations in temperature. Across the state, seasonal temperature variation also tends to be great, with typically cold, snowy winters and hot summers; extremes are somewhat ameliorated around Lake Michigan. Mean winter temperatures are about 22 °F (−6 °C) in the north and 37 °F (3 °C) in the south; summer equivalents, respectively, are 74 °F (23 °C) and 80 °F (27 °C). Mean annual precipitation in the north is about 34 inches (864 mm) and in the south 46 inches (1,170 mm). The growing season varies from 205 days in the south to 155 days in the northernmost counties. Illinois vegetational regions are separated into the tallgrass prairie of northern and central Illinois and the oak-hickory forest of the western and southern regions. Only tiny fragments of the original tallgrass prairie have been preserved, and some small areas have been reconstructed; the largest restored prairie in the state is Midewin National Tallgrass Prairie, near Joliet. Before European settlers—first the French and then the English—moved in beginning in the 17th century, oak-hickory forests also prevailed in the north. The settlers, needing wood for fuel and construction material and the lumbering industry, stripped most of the trees, which left only 10 percent forest cover in Illinois. More than 6,200 square miles (16,000 square km) of forests remain, some 1,100 square miles (2,800 square km) of them in Shawnee National Forest. The state's length gives it an unusual variety of Northern and Southern plant life. Both Northern and Southern wildflowers grow in Illinois, as do a variety of trees, such as white pines, tamaracks, walnuts, cypresses, and tupelos.

MAJOR CITIES:

Northern Illinois – Chicago
 Central Illinois – Springfield
 Southern Illinois – Mount Vernon



CULTURAL ACTIVITIES

Click on these sites for more cultural activity ideas:

- <https://www.tripadvisor.com/Attractions-g28934-Activities-Illinois.html>
- <https://www.enjoyillinois.com/>
- <https://www.atlasobscura.com/things-to-do/illinois>

Willis Tower Glass Platform – Chicago

<https://www.atlasobscura.com/places/sears-tower-glass-platform>

Millennium Park – Chicago

https://www.chicago.gov/city/en/depts/dca/suppinfo/millennium_park.html

Lincoln Park Zoo – Chicago

<https://www.lpzoo.org/>

Abandoned Town of Cairo – Cairo

<https://www.atlasobscura.com/places/cairo-illinois>

Cave-in-Rock Hike – Cave-in-Rock

<https://www.atlasobscura.com/places/cave-in-rock>

Morton Arboretum – Lisle

<https://mortonarb.org/>

Wrigley Field – Chicago

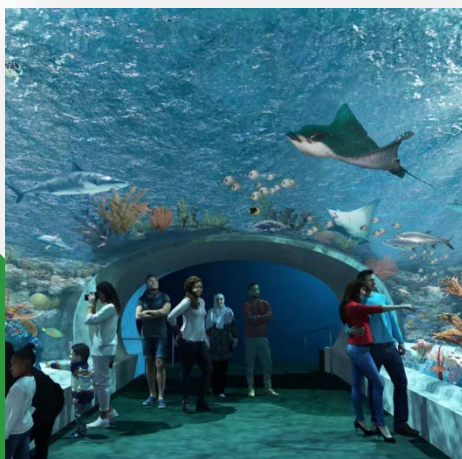
<https://www.mlb.com/cubs/ballpark>

Shedd Aquarium – Chicago

<https://www.sheddaquarium.org/>

Starved Rock State Park – Utica

<https://visitsouthillinois.com/guided-canyon-rim-trail/locations/perrine-bridge/>



GROCERY SHOPPING

Jewel-Osco	Save A Lot
Wal-Mart Supercenter	ALDI
Dominick's Finer Foods	Costco

Click on this link for more grocery stores in Illinois:

<http://supermarketpage.com/state/IL/>



SHOPPING MALLS

Click on this link for a list of shopping malls in Illinois:

<https://mallseeker.com/Illinois-malls.aspx>

PHARMACIES

Walgreens	Target (CVS)
Walmart	Meijer Pharmacy
Jewel-Osco	

Click here to locate other pharmacies in Illinois:

<https://www.goodrx.com/pharmacy-near-me/all/il>



POST OFFICES / SHIPPING



Click here for more information:

<https://www.postofficehours.net/state/IL.html>



Click here for more information:

<https://local.fedex.com/en-us/il>



Click here for more information:

<https://locations.theupsstore.com/il>

TIME ZONES

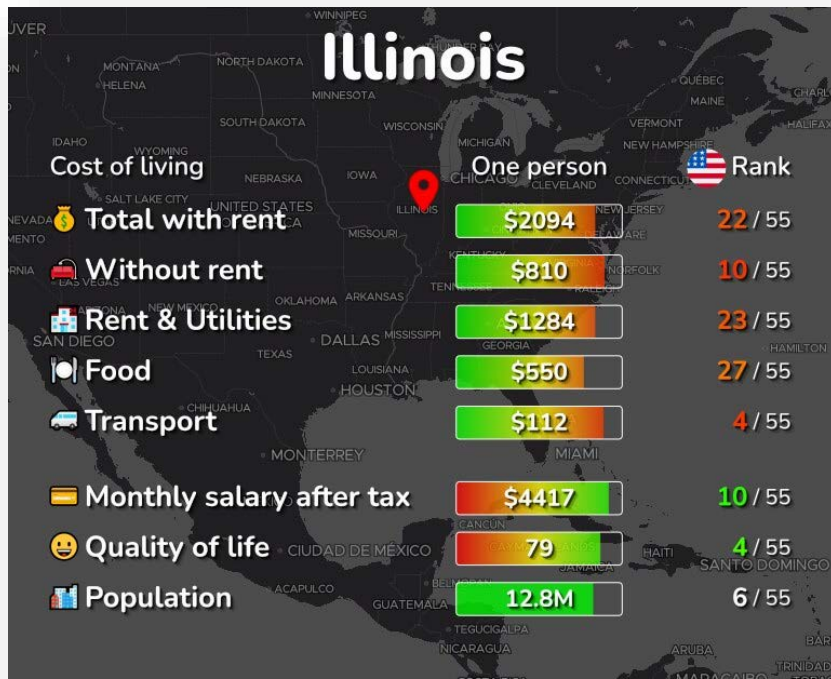


Click here for more information:

https://www.timetemperature.com/tzus/Illinois_time_zone.shtml

Illinois Local Time Details	
Time Zone Abbreviations	Central Standard Time - is abbreviated as CST Central Daylight Time - is abbreviated as CDT
UTC - GMT Offset	Illinois is GMT/UTC - 6h during Standard Time Illinois is GMT/UTC - 5h during Daylight Saving Time
Daylight Saving Time Usage	Illinois does utilize Daylight Saving Time.
Daylight Saving Start Date	Illinois starts Daylight Saving Time on Sunday March 12, 2023 at 2:00 AM local time.
Daylight Saving End Date	Illinois ends Daylight Saving Time on Sunday November 5, 2023 at 2:00 AM local time.

COST OF LIVING IN ILLINOIS



Click here for more information:

<https://livingcost.org/cost/united-states/il>



MINIMUM WAGE

State	2023 Minimum Wage	2023 Tipped Wage
IL	\$13.00	\$7.80

Click here for more information:

<https://www.dol.gov/agencies/whd/minimum-wage/state#il>

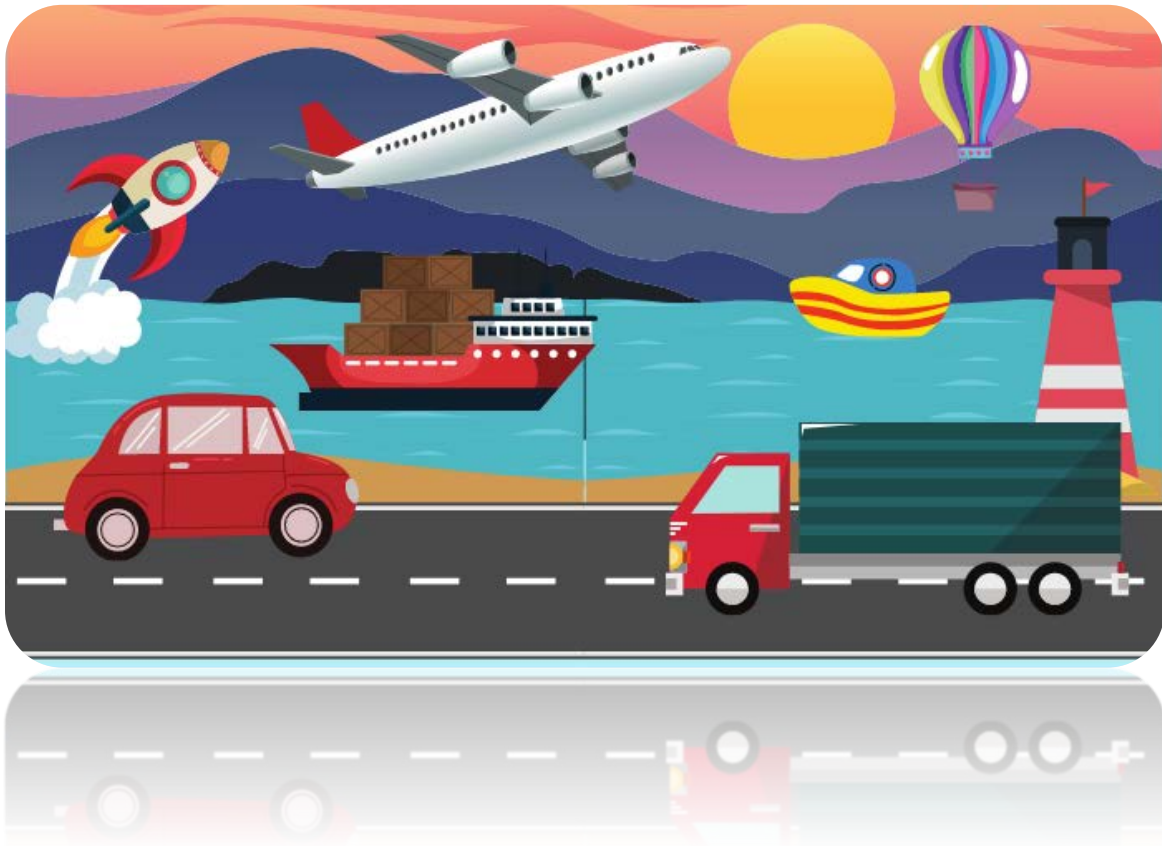
or

<https://www.dol.gov/agencies/whd/state/minimum-wage/tipped#Illinois>

WORKERS' COMPENSATION

Click here for more information:

<https://iwcc.illinois.gov/>



TRANSPORTATION SERVICES

Click here for more information:

<https://www.apta.com/research-technical-resources/public-transportation-links/Illinois/>

Ride Sharing:

www.uber.com

www.lyft.com

