



SunCatcherStudio.com

# INDIANA

## Indiana: some state symbols



flag



bird: northern cardinal

© Steve Byland/stock  
adobe.com



seal



flower: peony

© hepersoc/stock  
adobe.com



tree: tulip tree

© Jean-Pol GRANDMONT (CC BY-SA 2.5)

© Encyclopædia Britannica, Inc.

For more information about INDIANA, click here:

<http://www.in.gov/>



## INDIANA – CLIMATE

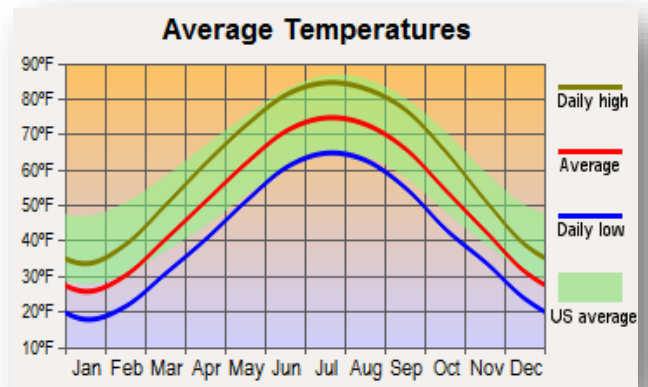
<https://www.weather.gov/wrh/Climate?wfo=ind>

Air temperatures in Indiana have a wide annual range due to the state's location and its natural characteristics. The state record observed daily maximum temperature is 116 degrees at Collegeville on July 14, 1936. The record minimum temperature is -36 degrees observed on January 19, 1994, at New Whiteland. January is typically the coldest month of the year with normal daily maximum temperatures ranging from 31 to 38 degrees north to south across Indiana. Normal January minimums range between 15 and 21 degrees north to south. July is the warmest month with daily maximums averaging 80 to 83 degrees and minimums 63 to 65 degrees north to south. Winters have been milder than usual during the last decade due to the strong influences of El Nino on Indiana weather. Prolonged severe hot and cold spells are uncommon in Indiana.

Average annual precipitation ranges from 37 inches in northern Indiana to 47 inches in the south. May is the wettest month of the year with average rainfall between 4 and 5 inches across the state. Average rainfall decreases slightly as summer progresses. Autumn months are drier with 3 inches of rainfall typical in each month. Indiana winters are the driest time of year with less than 3 inches of precipitation commonly received each month. February is the driest month of the year statewide, then precipitation increases in March and April as the spring soil moisture recharge season begins. On average precipitation occurs every third day in Indiana.

## MAJOR CITIES:

East Region	Fort Wayne
Central Region	Indianapolis
South Region	Evansville
North Region	South Bend
South Central	Bloomington



# CULTURAL ACTIVITIES

Click on these sites for more cultural activity ideas:

- <https://www.busytourist.com/fun-things-to-do-in-indiana/>
- <https://www.atlasobscura.com/things-to-do/indiana>
- <https://www.attractionsofamerica.com/attractions/indiana.php>

**Market Street Catacombs - Indianapolis**

<https://www.indianalandmarks.org/tours-events/ongoing-tours-events/city-market-catacombs-tour/>

**Bluespring Caverns - Bedford**

<https://www.bluespringcaverns.com/>

**Indiana Medical History Museum - Indianapolis**

<https://www.imhm.org/>

**Exotic Feline Rescue Center – Center Point**

<https://efrc.org/>

**Rotary Jail Museum - Crawfordsville**

<https://www.rotaryjailmuseum.org/>

**Kurt Vonnegut Memorial Library and Museum - Indianapolis**

<https://www.vonnegutlibrary.org/>

**Twisted House - Indianapolis**

<https://indyartcenter.org/>

**Hall of Heroes – Elkhart**

<https://hallofheroesmuseum.com/>

**East Race Waterway – South Bend**

<https://eastracewaterway.gr8.com/>



# GROCERY SHOPPING

Kroger	Jay C Food Stores
Aldi Inc.	Marsh Supermarkets Inc.
Buehler Foods Inc	More for Less
IGA Foodliner	Lakeshore Foods Corp

**Click on this link for more grocery stores:**

<http://supermarketpage.com/state/IN/>



## SHOPPING MALLS

**Click on this link for a list of shopping malls:**

<https://mallseeker.com/indiana-malls.aspx>

## PHARMACIES

Walgreens	CVS Pharmacy
Target	Kroger
Rite Aid	Wal-Mart

**Click here to locate other pharmacies:**

<https://www.goodrx.com/pharmacy-near-me/all/in>



# POST OFFICES / SHIPPING



Click here for more information:

<http://www.postofficehours.net/state/IN.html>



Click here for more information:

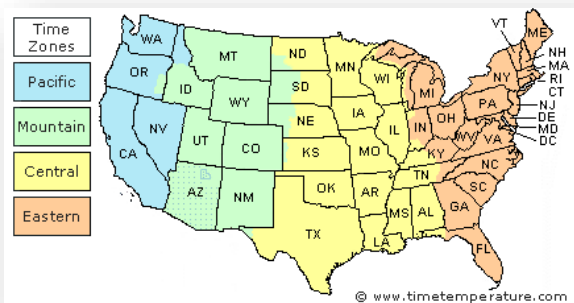
<https://local.fedex.com/en-us/in>



Click here for more information:

<https://locations.theupsstore.com/in>

## TIME ZONES

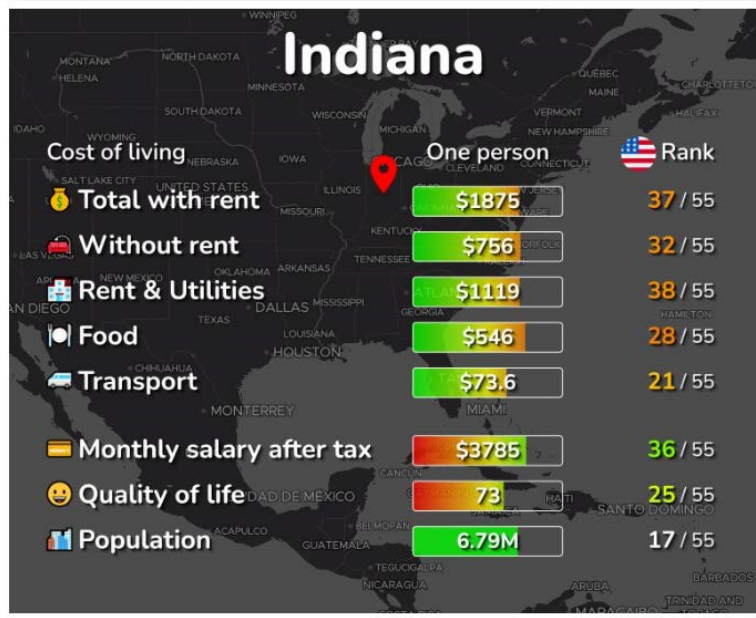


Click here for more information:

[https://www.timetemperature.com/tzus/indiana\\_time\\_zone.shtml](https://www.timetemperature.com/tzus/indiana_time_zone.shtml)

Indiana Local Time Details	
Eastern Time Zone Abbreviations	Eastern Standard Time - is abbreviated as EST Eastern Daylight Time - is abbreviated as EDT
Central Time Zone Abbreviations	Central Standard Time - is abbreviated as CST Central Daylight Time - is abbreviated as CDT
Eastern Time Zone UTC - GMT Offset	Eastern Time Zone is GMT/UTC - 5h during Standard Time Eastern Time Zone is GMT/UTC - 4h during Daylight Saving Time
Central Time Zone UTC - GMT Offset	Central Time Zone in Indiana is GMT/UTC - 6h during Standard Time Central Time Zone in Indiana is GMT/UTC - 5h during Daylight Saving Time
Daylight Saving Time Usage	Indiana does utilize Daylight Saving Time.
Daylight Saving Start Date	Indiana starts Daylight Saving Time on Sunday March 12, 2023 at 2:00 AM local time.
Daylight Saving End Date	Indiana ends Daylight Saving Time on Sunday November 5, 2023 at 2:00 AM local time.

## COST OF LIVING IN INDIANA



Click here for more information:

<https://livingcost.org/cost/united-states/in>



## MINIMUM WAGE

State	2023 Minimum Wage	2023 Tipped Wage
IN	\$7.25	\$2.13

Click here for more information:

<https://www.dol.gov/agencies/whd/minimum-wage/state#in>

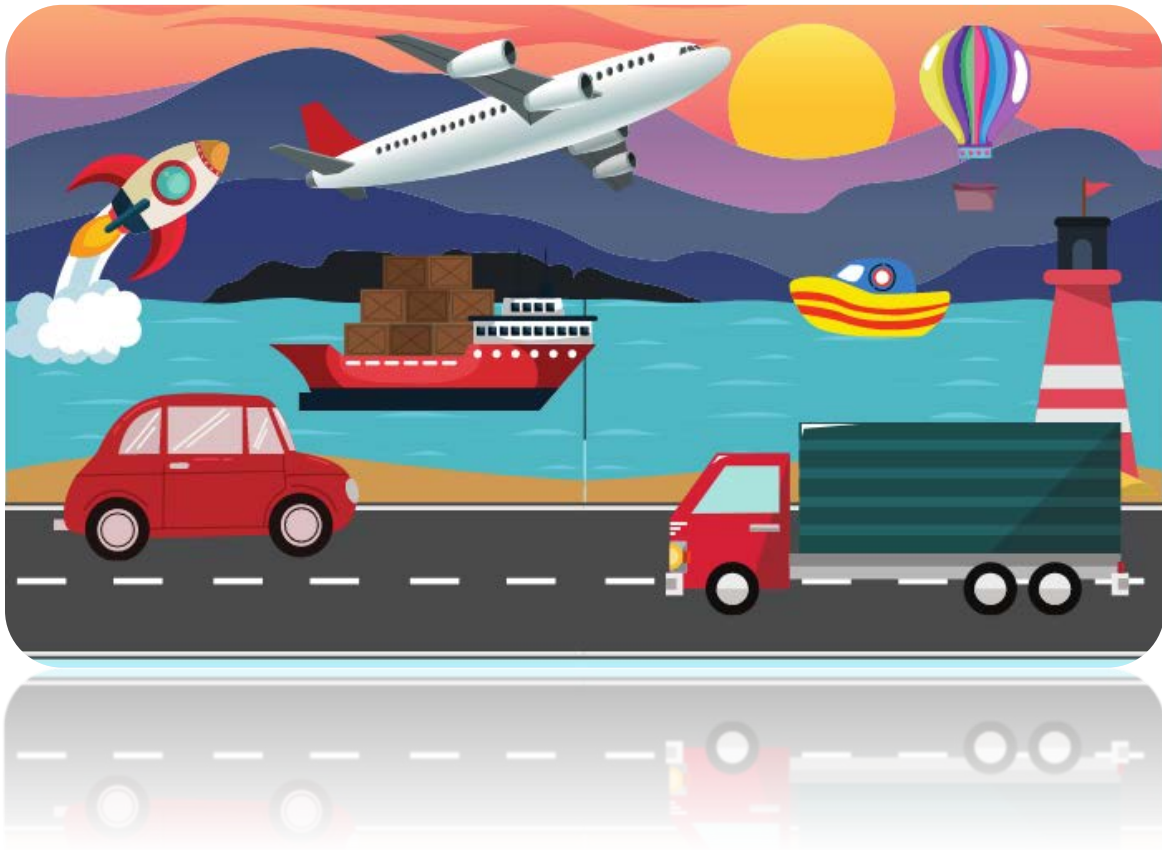
or

<https://www.dol.gov/agencies/whd/state/minimum-wage/tipped#Indiana>

## WORKERS' COMPENSATION

Click here for more information:

<http://www.in.gov/wcb/>



## TRANSPORTATION SERVICES

**Click here for more information:**

<https://www.apta.com/research-technical-resources/public-transportation-links/indiana/>

**Ride Sharing:**

[www.uber.com](http://www.uber.com)

[www.lyft.com](http://www.lyft.com)