



# LOUISIANA

## Louisiana: some state symbols



flag



seal



bird: eastern brown pelican



flower: southern magnolia



tree: bald cypress

© Encyclopædia Britannica, Inc.

For more information about LOUISIANA, click here:

<http://www.la.gov/>



## LOUISIANA – CLIMATE

<https://www.britannica.com/place/Louisiana-state>

Louisiana has a semi-tropical climate, which remains relatively constant. The amount of rainfall and humidity in the state depends on a region's distance from the Gulf of Mexico. Areas closer to the Gulf tend to be far more humid, with little variation between temperatures.

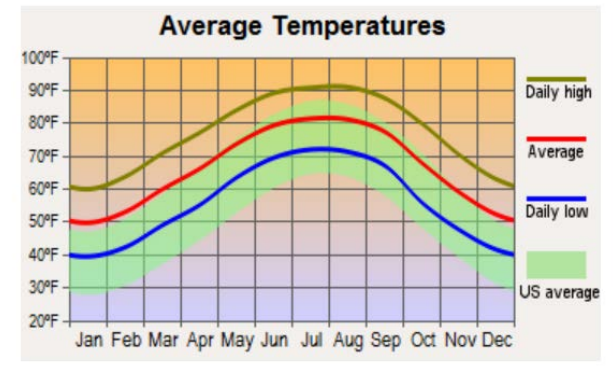
New Orleans is usually hot and humid, with sunshine occurring for 60% of the year. Average temperatures in the city range from 52°F (11°C) in January to 82°F (28°C) in July, with an average daily temperature of 68°F (20°C). Some snowfall occurs in the north of the state, but southern Louisiana very rarely experiences any.

June marks the beginning of the hurricane season, usually lasting until September, and the state has been hit repeatedly by severe hurricanes throughout recent decades, the most severe being Hurricane Katrina in August 2005 and Hurricane Rita in September 2005. Most hit the southeastern and southwestern parts of Louisiana respectively, with devastating effect.

## MAJOR CITIES:

New Orleans  
Shreveport  
Lafayette  
Bossier City

Baton Rou  
Lake Charles  
Kenner  
Baton Rouge



# CULTURAL ACTIVITIES



Click on these sites for more cultural activity ideas:

- <https://www.inspirock.com/united-states/cultural-activities-in-louisiana>
- [https://www.exploreloouisiana.com/attractions/museums?gad=1&gclid=EAlaQobChMIpvyL\\_ZDm\\_gIVvSCtBh0JcQG9EAAAYASAAEgluJfD\\_BwE](https://www.exploreloouisiana.com/attractions/museums?gad=1&gclid=EAlaQobChMIpvyL_ZDm_gIVvSCtBh0JcQG9EAAAYASAAEgluJfD_BwE)
- <https://www.busytourist.com/things-to-do-in-louisiana/>

## **Cajun Country – Lafayette**

<https://www.lafayettetravel.com/louisianas-cajun-country/>

## **LSU Tigers – Baton Rouge**

<https://lsusports.net/sports/football>

## **French Quarter – New Orleans**

[www.frenchquarter.com](http://www.frenchquarter.com)

## **Jean Lafitte National Historical Park and Preserve – New Orleans**

[www.nps.gov](http://www.nps.gov)

## **Honey Island Swamp Tour - Slidell**

[www.honeyislandswamp.com](http://www.honeyislandswamp.com)

## **Louisiana's Old State Capitol – Baton Rouge**

[www.louisianaoldstatecapitol.org](http://www.louisianaoldstatecapitol.org)

## **R. W. Norton Art Gallery - Shreveport**

<http://www.rwnaf.org/>

## **USS Kidd and Veterans Memorial – Baton Rouge**

[www.usskidd.com](http://www.usskidd.com)

## **St. Martin de Tours Catholic Church – St. Martinville**

<https://saintmartindetours.org/>



# GROCERY SHOPPING

Albertsons	Piggly Wiggly
Breaux Mart Supermarket	Rouse's Supermarket
Kroger	Walmart Supercenter
Market Basket	Market Basket

**Click on this link for more grocery stores:**

<http://supermarketpage.com/state/LA/>



# SHOPPING MALLS

**Click on this link for a list of shopping malls:**

<http://www.mallseeker.com/louisianamalls.aspx>

# PHARMACIES

CVS Pharmacy	Winn-Dix
Costco	Wal-Mart Pharmacy
Walgreens Pharmacy	

**Click here to locate other pharmacies:**

<https://www.goodrx.com/pharmacy-near-me/all/la>



## POST OFFICES / SHIPPING



Click here for more information:

<http://www.postofficehours.net/state/LA.html>



Click here for more information:

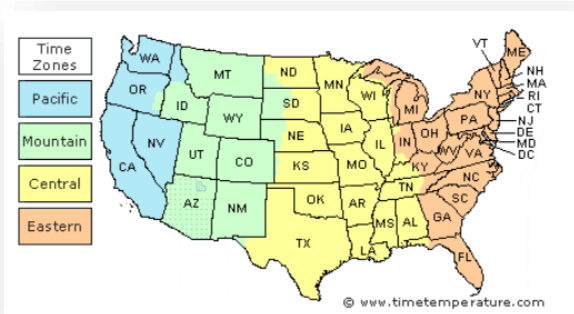
<https://local.fedex.com/en-us/la>



Click here for more information:

<https://locations.theupsstore.com/la>

## TIME ZONES



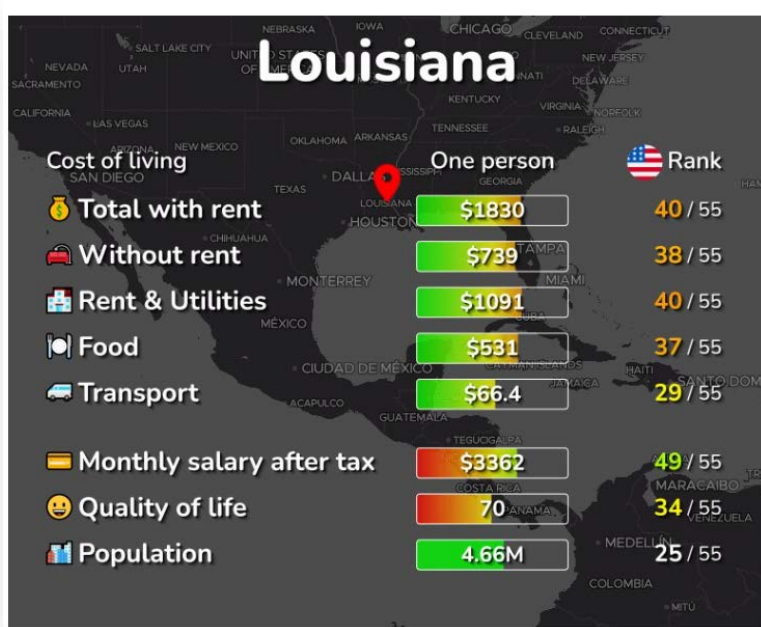
Click here for more information:

[https://www.timetemperature.com/tzus/Louisiana time zone.shtml](https://www.timetemperature.com/tzus/Louisiana%20time%20zone.shtml)

### Louisiana Local Time Details

Time Zone Abbreviations	Central Standard Time - is abbreviated as CST Central Daylight Time - is abbreviated as CDT
UTC - GMT Offset	Louisiana is GMT/UTC - 6h during Standard Time Louisiana is GMT/UTC - 5h during Daylight Saving Time
Daylight Saving Time Usage	Louisiana does utilize Daylight Saving Time.
Daylight Saving Start Date	Louisiana starts Daylight Saving Time on Sunday March 12, 2023 at 2:00 AM local time.
Daylight Saving End Date	Louisiana ends Daylight Saving Time on Sunday November 5, 2023 at 2:00 AM local time.

# COST OF LIVING IN LOUISIANA



Click here for more information:

<https://livingcost.org/cost/united-states/la>



## MINIMUM WAGE

State	2023 Minimum Wage	2023 Tipped Wage
LA	\$7.25	\$5.12

Click here for more information:

<https://www.dol.gov/agencies/whd/minimum-wage/state#la>

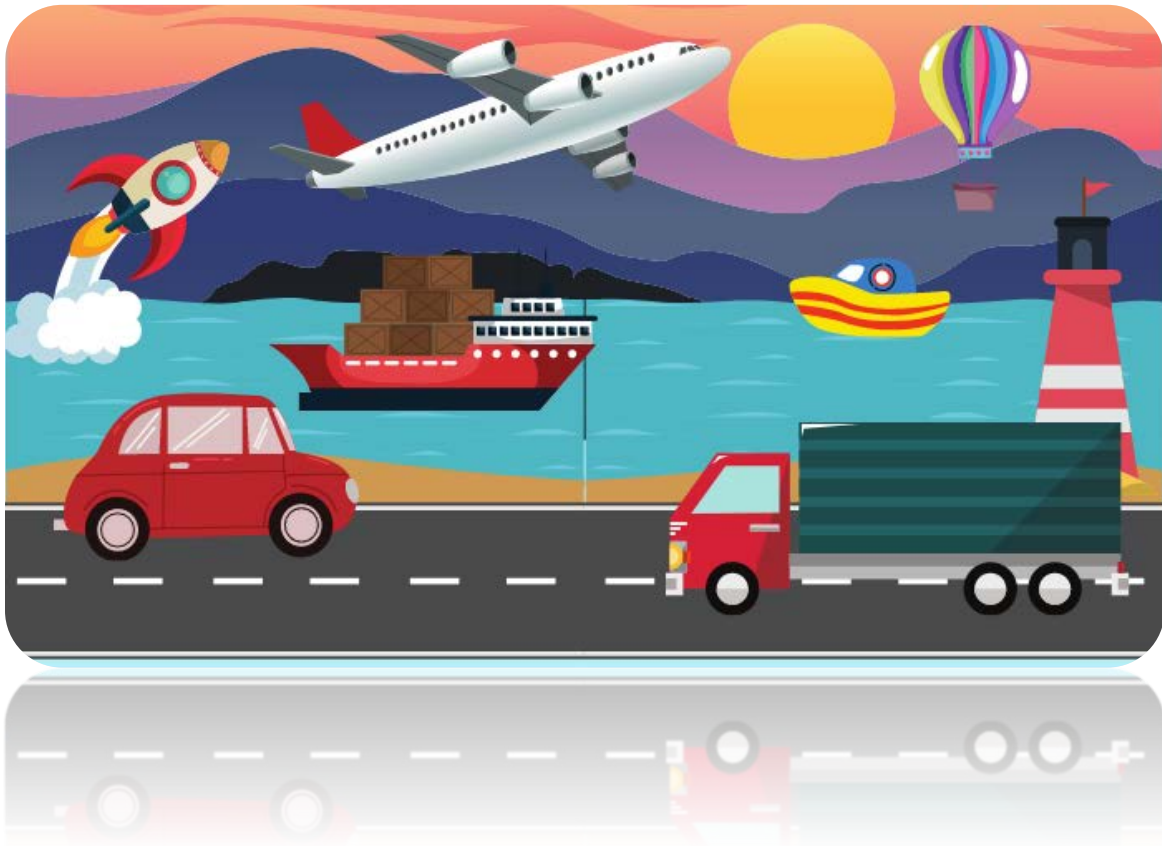
or

<https://www.dol.gov/agencies/whd/state/minimum-wage/tipped#Louisiana>

## WORKERS' COMPENSATION

Click here for more information:

[https://www.laworks.net/workerscomp/owc\\_mainmenu.asp](https://www.laworks.net/workerscomp/owc_mainmenu.asp)



## TRANSPORTATION SERVICES

**Click here for more information:**

<https://www.apta.com/research-technical-resources/public-transportation-links/louisiana/>

**Ride Sharing:**

[www.uber.com](http://www.uber.com)

[www.lyft.com](http://www.lyft.com)

