

SunCatcherStudio.com

MASSACHUSETTS

Massachusetts: some state symbols



flag



bird: black-capped chickadee



seal



flower: mayflower



tree: American elm

© Encyclopædia Britannica, Inc.

For more information about Massachusetts, click here:

www.massachusetts.gov



MASSACHUSETTS – CLIMATE

<https://www.timeanddate.com/weather/usa/massachusetts>

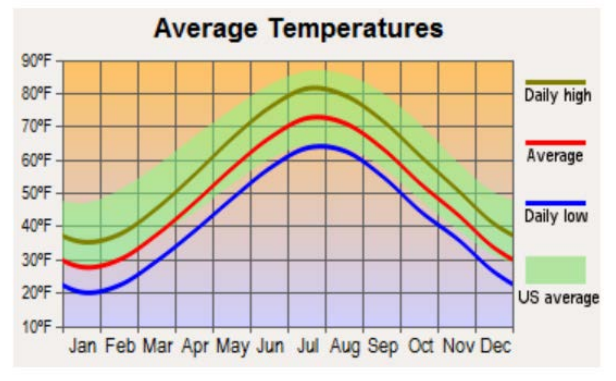
Massachusetts has a mainly humid continental climate (Köppen climate classification Dfb) with warm, humid summers and cold, snowy winters. Southeastern coastal areas show shades of a humid subtropical climate (Köppen Cfa) with relatively mild winters. The Atlantic Ocean stretches from the northeast to the southeast, while Rhode Island and Connecticut in the south, New York in the west, Vermont and New Hampshire in the north form the borders of the state. Massachusetts lies in the New England region of the northeastern United States. The distance from the relatively mild ocean waters, elevation, and terrain influence the climate in the different parts of the state.

Massachusetts, the Bay State, lies at an average elevation of 150 meters, with Mount Greylock as the highest peak at 1064 meters. The topography consists of mountains in the west and rolling hills, flatlands with marshes, lakes, and ponds along the coastal plains and the central region. Three climatic divisions prominently split the state. The Western division consists of low mountains of the Berkshire Hills and the Taconic Range. The Coastal division consists of a 10 to 20 miles wide strip along the Atlantic Coast. The Central division consists of flatlands and mountains, such as the southern White Mountains of the Monadnock region. Including the southern and eastern shores of the Cape Cod Bay, the coastline is 200 miles long.

MAJOR CITIES:

Boston
Springfield
Cambridge
New Bedford
Lynn

Fall River
Worcester
Lowell
Quincy
Brockton



CULTURAL ACTIVITIES

Click on these sites for more cultural activity ideas:

- <https://www.busytourist.com/things-to-do-in-massachusetts/>
- <https://www.visit-massachusetts.com/state/90-great-things-to-do-in-massachusetts/>
- <https://www.atlasobscura.com/things-to-do/massachusetts>



Minute Man National Historical Park – Middlesex County

<https://www.nps.gov/mima/index.htm>

Museum of Fine Arts – Boston

<https://www.mfa.org/>

Boston Common – Boston

<https://www.boston.gov/parks/boston-common>

The Freedom Trail – Boston

<https://www.thefreedomtrail.org/>

Fenway Park – Boston

<https://www.mlb.com/redsox/ballpark>

Martha's Vineyard – Dukes County

<https://www.mvy.com/>

Norman Rockwell Museum - Stockbridge

<https://www.nrm.org/>

The House of the Seven Gables – Salem

<https://7gables.org/>

Faneuil Hall – Boston

<https://faneuilhallmarketplace.com/>

Isabella Stewart Gardner Museum – Boston

<https://www.gardnermuseum.org/>

Old Sturbridge Village – Sturbridge

<https://www.osv.org/>



GROCERY SHOPPING

| | |
|---------------------|----------------------|
| Big Y Foods | Price Chopper |
| BJ's Wholesale Club | Donelans Supermarket |
| Costco | Stop & Go |
| Market Basket | White Hen Pantry |

Click on this link for more grocery stores:

<http://supermarketpage.com/state/MA/>



SHOPPING MALLS

Click on this link for a list of shopping malls:

<https://mallseeker.com/massachusettsmall.aspx>

PHARMACIES

| | |
|--------------|------------------|
| CVS Pharmacy | Walmart Pharmacy |
| Walgreens | Costco |
| Target | Sam's Club |

Click here to locate other pharmacies:

<https://www.goodrx.com/pharmacy-near-me/all/ma>



POST OFFICES / SHIPPING



Click here for more information:

<http://www.postofficehours.net/state/MA.html>



Click here for more information:

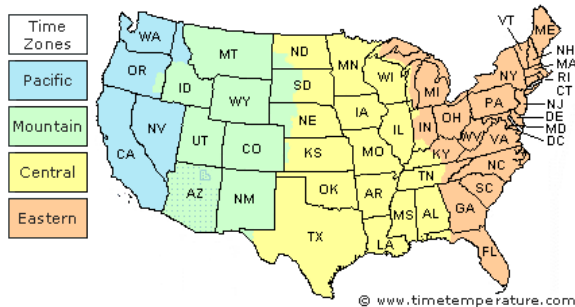
<https://local.fedex.com/en-us/ma>



Click here for more information:

<https://locations.theupsstore.com/ma>

TIME ZONES



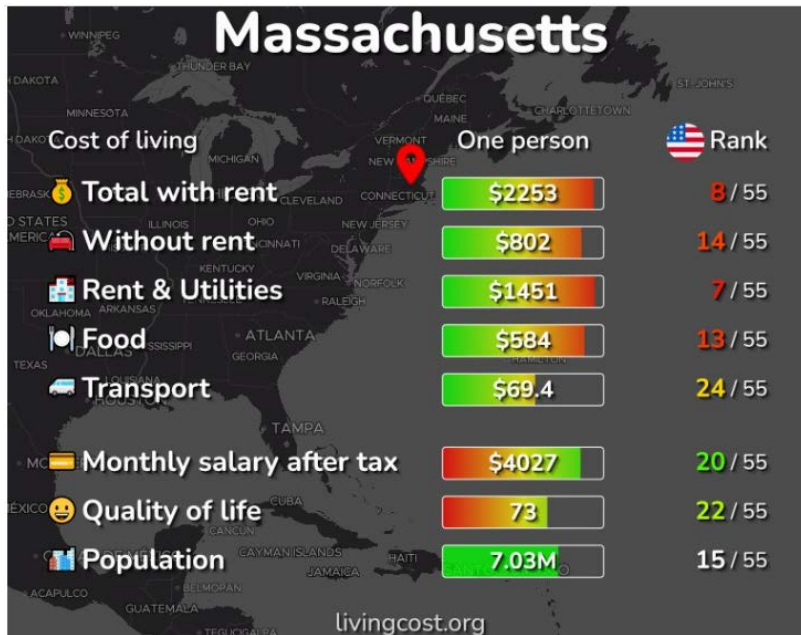
Click here for more information:

https://www.timetemperature.com/tzus/massachusetts_time_zone.shtml

Massachusetts Local Time Details

| | |
|----------------------------|---|
| Time Zone Abbreviations | Eastern Standard Time - is abbreviated as EST Eastern Daylight Time - is abbreviated as EDT |
| UTC - GMT Offset | Massachusetts is GMT/UTC - 5h during Standard Time Massachusetts is GMT/UTC - 4h during Daylight Saving Time |
| Daylight Saving Time Usage | Massachusetts does utilize Daylight Saving Time. |
| Daylight Saving Start Date | Massachusetts starts Daylight Saving Time on Sunday March 12, 2023 at 2:00 AM local time. |
| Daylight Saving End Date | Massachusetts ends Daylight Saving Time on Sunday November 5, 2023 at 2:00 AM local time. |

COST OF LIVING IN MASSACHUSETTS



Click here for more information:

<https://www.eri.com/cost-of-living/united-states/massachusetts>



MINIMUM WAGE

| State | 2023 Minimum Wage | 2023 Tipped Wage |
|-------|-------------------|------------------|
| MA | \$15.00 | \$6.75 |

Click here for more information:

<https://www.dol.gov/agencies/whd/minimum-wage/state#ma>

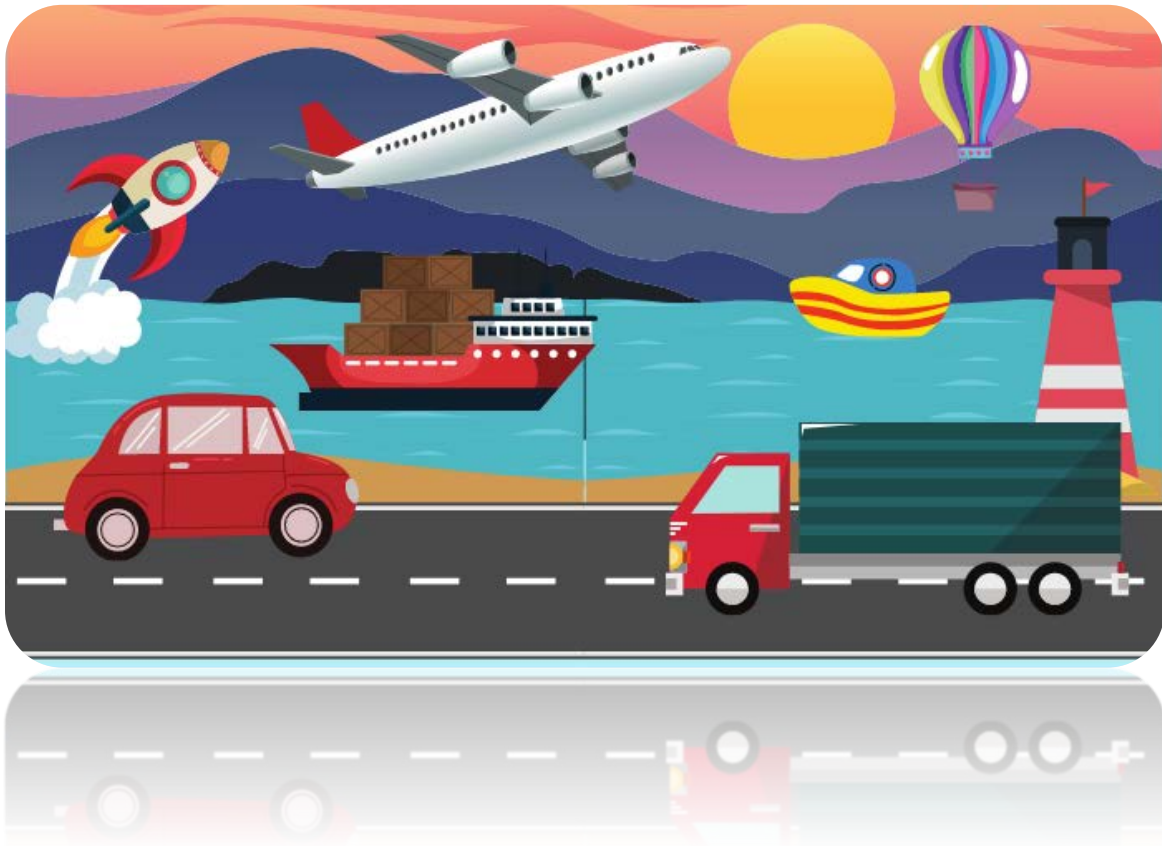
or

<https://www.dol.gov/agencies/whd/state/minimum-wage/tipped#Massachusetts>

WORKERS' COMPENSATION

Click here for more information:

<https://www.mass.gov/service-details/workers-compensation>



TRANSPORTATION SERVICES

Click here for more information:

<https://www.apta.com/research-technical-resources/public-transportation-links/massachusetts/>

Ride Sharing:

www.uber.com

www.lyft.com