



SanCatcherStudio.com

MICHIGAN

Michigan: some state symbols



flag



bird: American robin

NASA



tree: white pine



seal



flower: apple blossom

© Encyclopædia Britannica, Inc.

For more information about Michigan, click here:

<https://www.michigan.gov/>



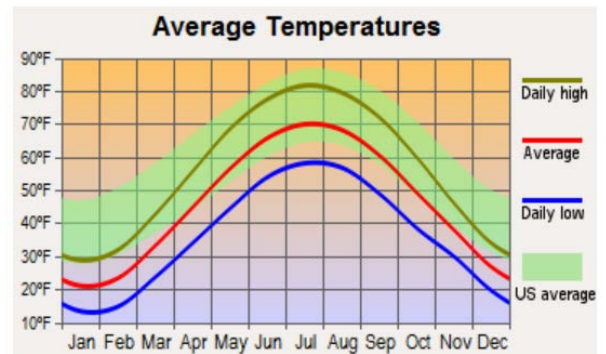
MICHIGAN – CLIMATE

<https://www.britannica.com/place/Michigan>

The Great Lakes cool the hot winds of summer and warm the cold winds of winter, giving Michigan a more moderate and somewhat moister climate than some other north-central states. Although the Upper Peninsula is cooler, the temperature ranges in Michigan's far northern and far southern cities do not differ excessively. In the far north, in Sault Sainte Marie, January high temperatures are usually in the low 20s F (about -6°C), while low temperatures hover near 5°F (-15°C); in July temperatures rise into the mid-70s F (about 24°C) and drop into the low 50s F (about 11°C) daily. In Detroit, in the southeast, January high temperatures usually reach the low 30s F (about 1°C), while lows fall to about 20°F (about -7°C); in July, high temperatures are typically in the mid-80s F (about 29°C) and lows are in the mid-60s F (about 18°C). Michigan has average annual precipitation of about 30–38 inches (760–965 mm). The wettest part of the state is in the southwest, with precipitation decreasing toward the northeast. Alpena, in the northeastern Lower Peninsula, is one of the driest sites in the United States east of the Mississippi River. There are two lake-effect snowbelts, one on the south shore of Lake Superior, in the Upper Peninsula, the other on the eastern shore of Lake Michigan, in the Lower Peninsula. These regions, which stretch inland for some 30 to 60 miles (50 to 100 km), may receive two to three times more winter snowfall than elsewhere in the state. The length of the growing season ranges from about two months in the Upper Peninsula to almost six months near the lakes in the southern portion of the Lower Peninsula. Severe weather phenomena, such as tornadoes, are rare and usually are restricted to late summer.

MAJOR CITIES:

North Michigan	Mackinac Island
West Michigan	Muskegon
Central Michigan	Grand Rapids, Lansing
Southeast Michigan	Detroit
South Michigan	Kalamazoo



CULTURAL ACTIVITIES

Click on these sites for more cultural activity ideas:

- <https://www.michigan.org/things-to-do>
- <https://travel.usnews.com/features/top-things-to-do-in-michigan>
- <https://www.busytourist.com/things-to-do-places-to-visit-michigan/>

Mackinac Island

<https://www.mackinacisland.org/>

Isle Royale National Park – Keweenaw County

<https://www.nps.gov/isro/index.htm>

The Detroit Institute of Arts – Detroit

<https://dia.org/>

Michigan History Center – Lansing

<https://www.michigan.gov/mhc>

Cherry Point Farm and Market Lavender Labyrinth - Shelby

<http://www.cherrypointmarket.net/>

Detroit Zoo – Detroit

<https://detroitzoo.org/>

Pictured Rocks National Lakeshore – Alger County

<https://www.nps.gov/piro/index.htm>

The Fisher Building – Detroit

<https://historicroetroit.org/buildings/fisher-building>

Belle Isle Park – Detroit

<https://www.belleisleconservancy.org/>

University of Michigan – Washtenaw

<https://umich.edu/>

Dinosaur Gardens – Sanborn Township

<https://www.dinosaurgardensllc.com/>



GROCERY SHOPPING

Aldi	Costco
Family Fare	Quality Dairy Co.
Kroger	Save A Lot
Meijer	Walmart Supercenter

Click on this link for more grocery stores:

<http://supermarketpage.com/state/MI/>



SHOPPING MALLS

Click on this link for a list of shopping malls:

<https://mallseeker.com/michiganmalls.aspx>

PHARMACIES

Rite-Aid	Walgreen Pharmacy
Kroger Pharmacy	CVS Pharmacy
Target	Sam's Club

Click here to locate other pharmacies:

<https://www.goodrx.com/pharmacy-near-me/all/mi>



POST OFFICES / SHIPPING



Click here for more information:

<http://www.postofficehours.net/state/MI.html>



Click here for more information:

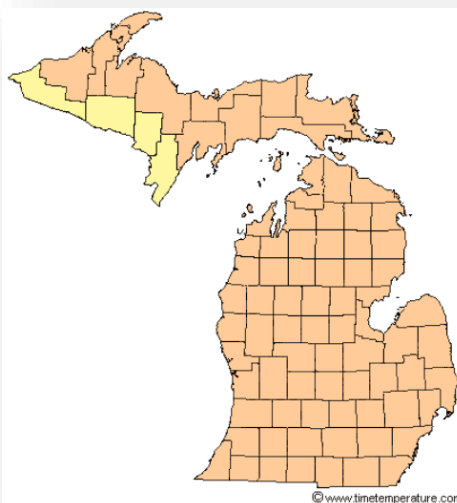
<https://local.fedex.com/en-us/mi>



Click here for more information:

<https://locations.theupsstore.com/mi>

TIME ZONES

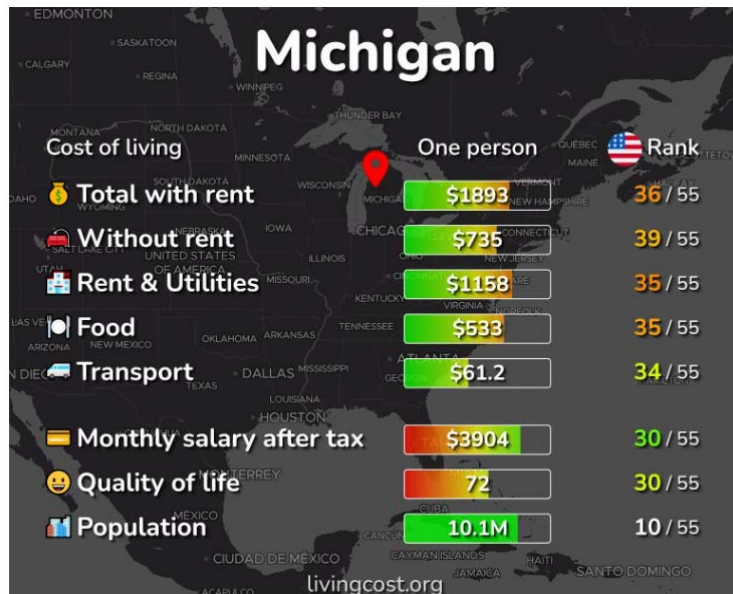


Click here for more information:

<https://www.timeanddate.com/time/zone/usa/michigan>

Michigan Local Time Details	
Eastern Time Zone Abbreviations	Eastern Standard Time - is abbreviated as EST Eastern Daylight Time - is abbreviated as EDT
Central Time Zone Abbreviations	Central Standard Time - is abbreviated as CST Central Daylight Time - is abbreviated as CDT
Eastern Time Zone UTC - GMT Offset	Eastern Time Zone is GMT/UTC - 5h during Standard Time Eastern Time Zone is GMT/UTC - 4h during Daylight Saving Time
Central Time Zone UTC - GMT Offset	Central Time Zone in Michigan is GMT/UTC - 6h during Standard Time Central Time Zone in Michigan is is GMT/UTC - 5h during Daylight Saving Time
Daylight Saving Time Usage	Michigan does utilize Daylight Saving Time.
Daylight Saving Start Date	Michigan starts Daylight Saving Time on Sunday March 12, 2023 at 2:00 AM local time.
Daylight Saving End Date	Michigan ends Daylight Saving Time on Sunday November 5, 2023 at 2:00 AM local time.

COST OF LIVING IN MICHIGAN



Click here for more information:

<https://www.eriesi.com/cost-of-living/united-states/michigan>



MINIMUM WAGE

State	2023 Minimum Wage	2023 Tipped Wage
MI	\$10.10	\$6.26

Click here for more information:

<https://www.dol.gov/agencies/whd/minimum-wage/state#mi>

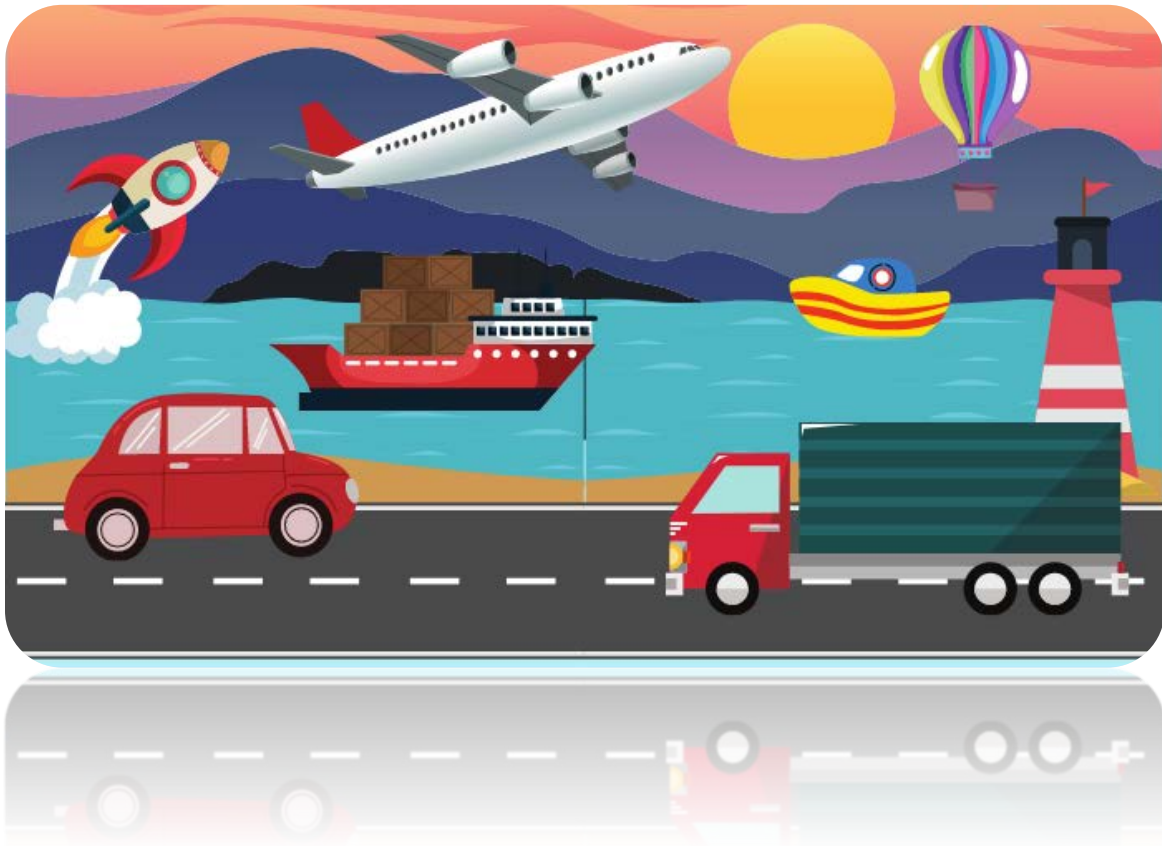
or

<https://www.dol.gov/agencies/whd/state/minimum-wage/tipped#Michigan>

WORKERS' COMPENSATION

Click here for more information:

<https://www.michigan.gov/leo/bureaus-agencies/wdca>



TRANSPORTATION SERVICES

Click here for more information:

<https://www.apta.com/research-technical-resources/public-transportation-links/michigan/>

Ride Sharing:

www.uber.com

www.lyft.com