



SunCatcherStudio.com

# MISSISSIPPI

## Mississippi: some state symbols



flag



bird: northern mockingbird



tree: southern magnolia



seal



flower: southern magnolia

© Encyclopædia Britannica, Inc.

For more information about MISSISSIPPI, click here:

[www.mississippi.gov](http://www.mississippi.gov)



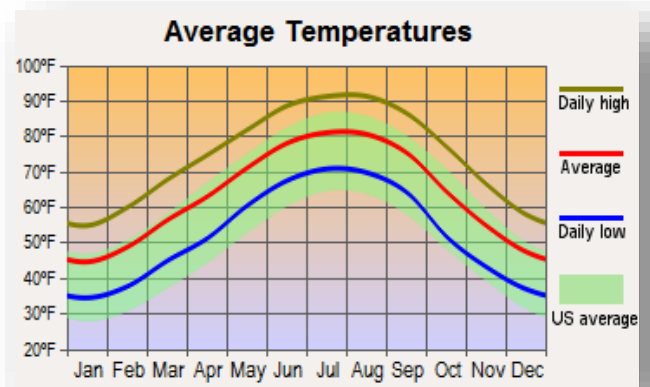
## MISSISSIPPI – CLIMATE

<https://www.geosciences.msstate.edu/state-climatologist/climate/>

Mississippi is located in the humid subtropical climate region, characterized by temperate winters; long, hot summers; and rainfall that is fairly evenly distributed through the year. However, the state is subject to periods of both drought and flood, and the climate rarely seems to bring "average" conditions. More typical would be an expectation of "feast or famine" with regard to weather events as the climate delivers energy and moisture in subtropical latitudes between a large landmass to the north and the Gulf of Mexico to the south. Prevailing southerly winds provide moisture for high humidity and potential discomfort from May through September. Locally violent and destructive thunderstorms are a threat on an average of about 60 days each year. Eight hurricanes have struck Mississippi's coast since 1895, and tornadoes are a particular danger, especially during the spring season. Normal mean annual temperatures range from 62F in the north to 68F along the coast. Low temperatures have dropped to 16F below zero while high temperatures exceed 90F over 100 days each year. Temperatures routinely exceed 100F at many places in the state each year and drop to zero or lower an average of once in five years in the state. Freezing temperatures reach the Gulf coast almost every winter. Normal precipitation ranges from about 50 to 65 inches across the state from north to south. Measurable snow or sleet falls on some part of the state in 95% of the years. In essence, Mississippi has a climate characterized by absence of severe cold in winter but by the presence of extreme heat in summer. The ground rarely freezes, and outdoor activities are generally planned year-round. Cold spells are usually of short duration and the growing season is long. Rainfall is plentiful, but so are dry spells and sunshine.

## MAJOR CITIES:

Middle MISSISSIPPI	Jackson
West MISSISSIPPI	Vicksburg, Yazoo City
East MISSISSIPPI	Meridian, Starkville, Columbus
South MISSISSIPPI	Hattiesburg, Biloxi, Gulfport, Mc Comb



# CULTURAL ACTIVITIES

Click on these sites for more cultural activity ideas:

- <https://365atlantatraveler.com/things-to-do-in-mississippi/>
- <https://www.atlasobscura.com/things-to-do/mississippi>
- <https://southerntrippers.com/things-to-do-in-mississippi/>

**Elvis Presley Birthplace – Tupelo**

<https://elvispresleybirthplace.com/>

**Fort Massachusetts on Ship Island – Gulfport**

<https://msshipisland.com/>

**Mississippi Petrified Forest - Flora**

<https://www.mspetrifiedforest.com/index.php>

**Brussel's Bonsai Nursery – Olive Branch**

<https://brusselsbonsai.com/>

**'Turning Angel' Status – Natchez**

<http://www.natchez.ms.us/278/Turning-Angel>

**Longwood - Natchez**

<https://natchezpilgrimage.com/>

**The Jefferson Davis Home and Presidential Library - Biloxi**

<https://www.visitbeauvoir.org/>

**Palestine Gardens - Lucedale**

<https://www.palestinegardens.org/>

**Hattiesburg Pocket Museum – Hattiesburg**

<https://hattiesburgconventioncommission.com/facilities/hattiesburg-pocket-museum/>





## GROCERY SHOPPING

ALDI	Big Star Super Market
Kroger	Piggly Wiggly
Shop N Save	Sunflower Supermarket
Wal-Mart Supercenter	Rouse's Supermarket

**Click on this link for more grocery stores:**

<http://supermarketpage.com/state/MS/>



## SHOPPING MALLS

**Click on this link for a list of shopping malls:**

<https://mallseeker.com/mississippi-malls.aspx>

## PHARMACIES

Walgreens	CVS Pharmacy
Walmart	Kroger
Sams Club	Winn-Dixie
Target (CVS)	Costco

**Click here to locate other pharmacies:**

<https://www.goodrx.com/pharmacy-near-me/all/ms>



## POST OFFICES / SHIPPING



Click here for more information:

<http://www.postofficehours.net/state/MS.html>



Click here for more information:

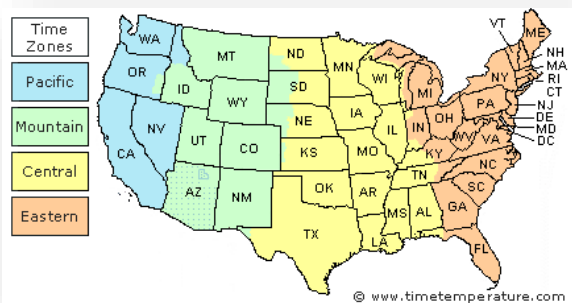
<https://local.fedex.com/en-us/ms>



Click here for more information:

<https://locations.theupsstore.com/ms>

## TIME ZONES



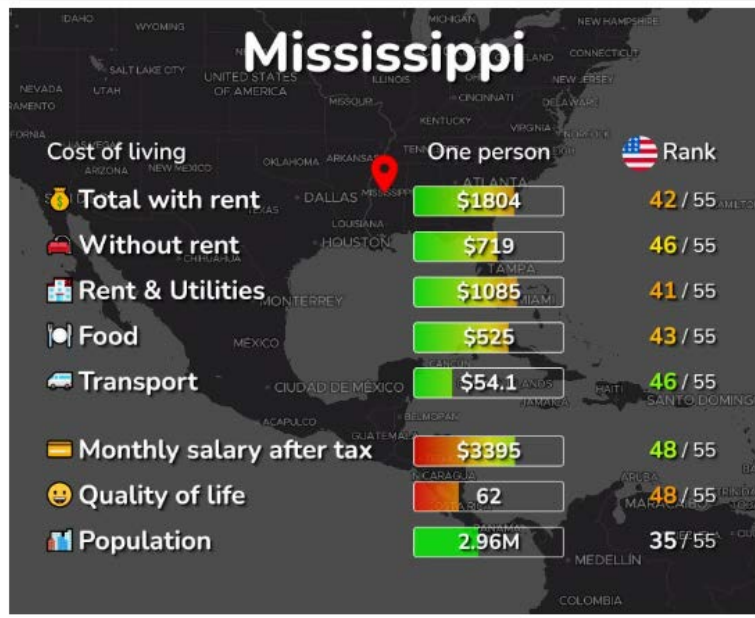
Click here for more information:

[https://www.timetemperature.com/tzus/mississippi\\_time\\_zone.shtml](https://www.timetemperature.com/tzus/mississippi_time_zone.shtml)

### Mississippi Local Time Details

Time Zone Abbreviations	Central Standard Time - is abbreviated as CST Central Daylight Time - is abbreviated as CDT
UTC - GMT Offset	Mississippi is GMT/UTC - 6h during Standard Time Mississippi is GMT/UTC - 5h during Daylight Saving Time
Daylight Saving Time Usage	Mississippi does utilize Daylight Saving Time.
Daylight Saving Start Date	Mississippi starts Daylight Saving Time on Sunday March 12, 2023 at 2:00 AM local time.
Daylight Saving End Date	Mississippi ends Daylight Saving Time on Sunday November 5, 2023 at 2:00 AM local time.

# COST OF LIVING IN MISSISSIPPI



Click here for more information:

<https://livingcost.org/cost/united-states/ms>



## MINIMUM WAGE

State	2023 Minimum Wage	2023 Tipped Wage
MS	\$7.25	\$2.13

Click here for more information:

<https://www.dol.gov/agencies/whd/minimum-wage/state#ms>

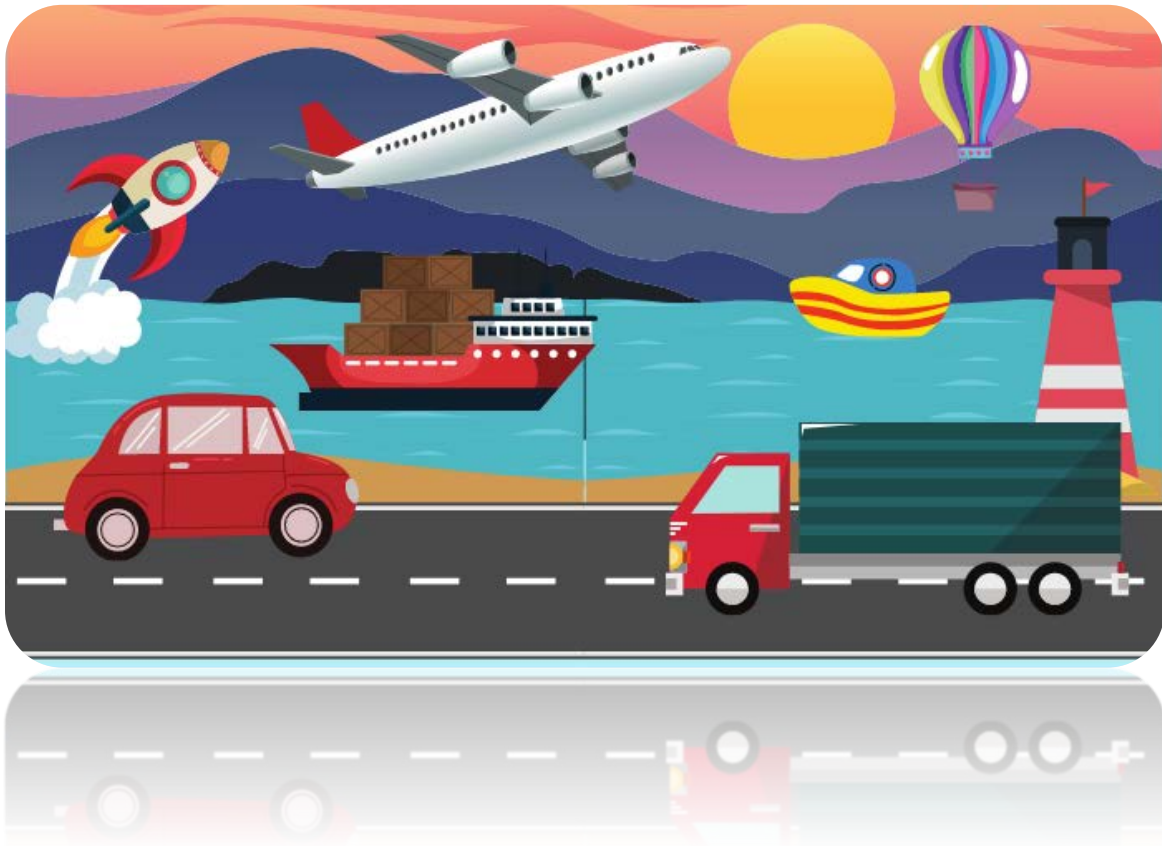
or

<https://www.dol.gov/agencies/whd/state/minimum-wage/tipped#Mississippi>

## WORKERS' COMPENSATION

Click here for more information:

<https://mwcc.ms.gov/#/home>



## TRANSPORTATION SERVICES

**Click here for more information:**

<https://www.apta.com/research-technical-resources/public-transportation-links/mississippi/>

**Ride Sharing:**

[www.uber.com](http://www.uber.com)

[www.lyft.com](http://www.lyft.com)