



GLOBAL EDUCATIONAL CONCEPTS



SunCatcherStudio.com

# MISSOURI

## Missouri: some state symbols



flag



© Steve Byland/Dreamstime.com

bird: eastern bluebird



seal



© padofusacchia/stock.adobe.com

flower: white hawthorn blossom



© Steven Smith/Dreamstime.com

tree: flowering dogwood

© Encyclopædia Britannica, Inc.

For more information about MISSOURI, click here:

<http://www.mo.gov/>



## MISSOURI – CLIMATE

<https://www.britannica.com/place/Missouri-state/Climate>

Missouri is susceptible to the influences of cold Canadian air, of warm, moist air from the Gulf of Mexico, and of drier air from the southwest. Although winds are variable throughout the year, summer winds generally blow from the south and southwest and winter winds from the north and northwest. Precipitation, usually sufficient for crops, varies from around 35 inches (890 mm) in the north and northwest to nearly 50 inches (1,270 mm) in the extreme southeast. About one-third of it falls from April to June. Heavy snows are unusual; most snow occurs between December and February. Missouri lies in “Tornado Alley,” the zone of maximum tornadic activity in the United States, and averages about 25 twisters annually. Occasionally, tornadoes have turned particularly deadly and destructive, as with the May 2011 storm that devastated the city of Joplin.

Maximum January temperatures usually range from the mid-30s F (about 2 °C) in the north and northwest to the mid-40s F (about 6 °C) in the southeast; minimum temperatures range from about 15 °F (about –9 °C) to the upper 20s F (about –3 °C). In the Ozarks, however, temperatures are typically cooler than they are elsewhere in the state. The extreme northwest usually has milder summers (late June through late September) than the southeast, but summer temperatures well above 100 °F (38 °C) may occur in any part of the state.

## MAJOR CITIES:

Western Missouri

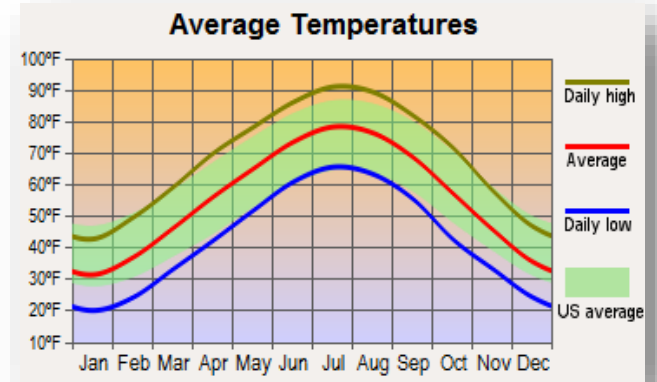
Kansas City,  
Independence

Central Missouri

Jefferson City

South Missouri

Springfield, Ozark  
Mountains, Branson



# CULTURAL ACTIVITIES



Click on these sites for more cultural activity ideas:

- <https://travelinmissouri.com/things-to-do-in-missouri/>
- <https://www.busytourist.com/fun-things-to-do-in-missouri/>
- <https://www.atlasobscura.com/things-to-do/missouri>

**Ha Ha Tonka Castle Ruins - Camdenton**

<https://mostateparks.com/park/ha-ha-tonka-state-park>

**City Museum – St. Louis**

<https://www.citymuseum.org/>

**Welch Springs Hospital Ruins - Jadwin**

<https://www.nps.gov/ozar/learn/historyculture/welch-hospital.htm>

**Bat Bar in Lost Canyon Cave - Ridgedale**

<https://bigcedar.com/activity/lost-canyon-cave-nature-trail/>

**Glore Psychiatric Museum – St. Joseph**

<https://www.stjosephmuseum.org/glore-psychiatric-museum>

**Bonne Terre Mines – Bonne Terre**

<https://www.bonnerterremine.com/>

**Meramec Caverns - Sullivan**

<https://www.americascave.com/>

**Lemp Mansion – St. Louis**

<https://www.lempmansion.com/>

**The National Museum of Toys and Miniatures – Kansas City**

<https://toyandminiaturemuseum.org/>



## GROCERY SHOPPING

ALDI	Rameys Supermarket
C & R Super Market	Save A Lot
Costco	Schnuck Markets
G & W Foods	Shop N Save
Kroger	Town & Country

**Click on this link for more grocery stores:**

<http://supermarketpage.com/state/MO/>



## SHOPPING MALLS

**Click on this link for a list of shopping malls:**

<http://www.mallseeker.com/missourimalls.aspx>

## PHARMACIES

Walgreens	CVS Pharmacy
Walmart	Target (CVS)
Hy-Vee	Sams Club
Costco	Gerbes Pharmacy

**Click here to locate other pharmacies:**

<https://www.goodrx.com/pharmacy-near-me/all/mo>



## POST OFFICES / SHIPPING



Click here for more information:

<http://www.postofficehours.net/state/MO.html>



Click here for more information:

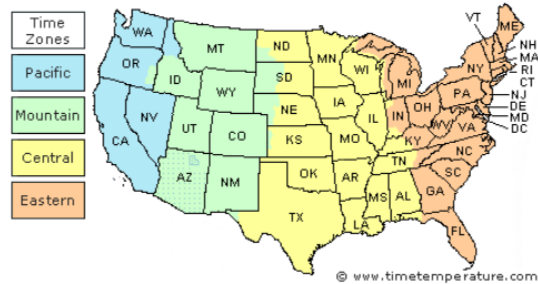
<https://local.fedex.com/en-us/mo>



Click here for more information:

<https://locations.theupsstore.com/mo>

## TIME ZONES



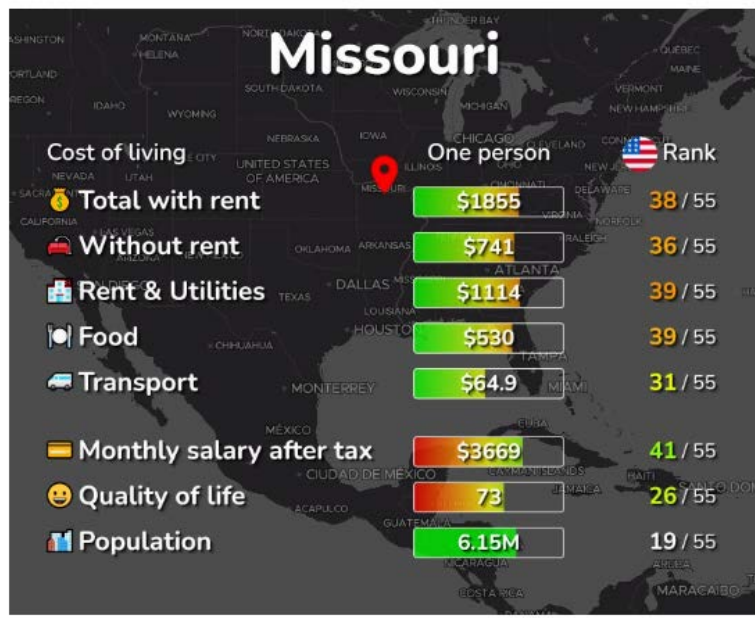
Click here for more information:

[https://www.timetemperature.com/tzus/missouri\\_time\\_zone.shtml](https://www.timetemperature.com/tzus/missouri_time_zone.shtml)

### Missouri Local Time Details

Time Zone Abbreviations	Central Standard Time - is abbreviated as CST Central Daylight Time - is abbreviated as CDT
UTC - GMT Offset	Missouri is GMT/UTC - 6h during Standard Time Missouri is GMT/UTC - 5h during Daylight Saving Time
Daylight Saving Time Usage	Missouri does utilize Daylight Saving Time.
Daylight Saving Start Date	Missouri starts Daylight Saving Time on Sunday March 12, 2023 at 2:00 AM local time.
Daylight Saving End Date	Missouri ends Daylight Saving Time on Sunday November 5, 2023 at 2:00 AM local time.

## COST OF LIVING IN MISSOURI



Click here for more information:

<https://livingcost.org/cost/united-states/mo>



## MINIMUM WAGE

State	2023 Minimum Wage	2023 Tipped Wage
MO	\$12.00	\$6.00

Click here for more information:

<https://www.dol.gov/agencies/whd/minimum-wage/state#mo>

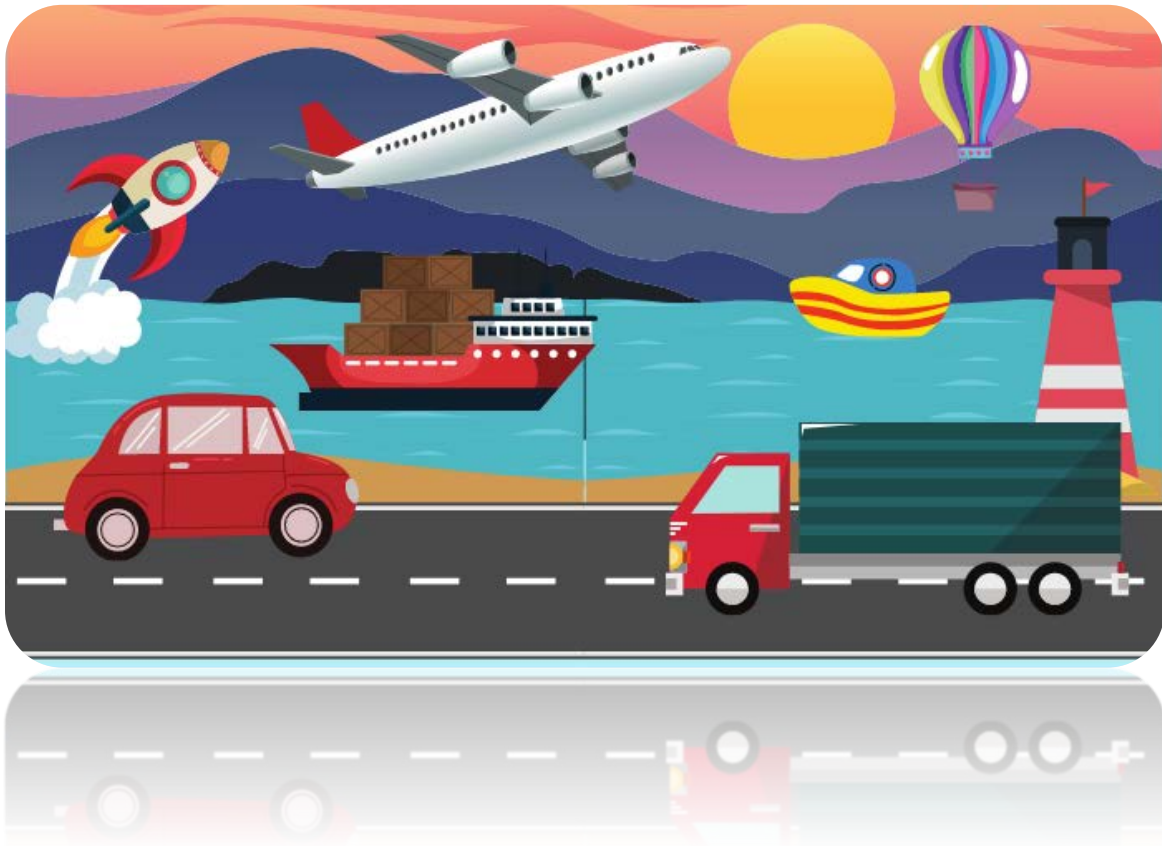
or

<https://www.dol.gov/agencies/whd/state/minimum-wage/tipped#Missouri>

## WORKERS' COMPENSATION

Click here for more information:

<https://labor.mo.gov/dwc>



## TRANSPORTATION SERVICES

**Click here for more information:**

<https://www.apta.com/research-technical-resources/public-transportation-links/missouri/>

**Ride Sharing:**

[www.uber.com](http://www.uber.com)

[www.lyft.com](http://www.lyft.com)