

# MONTANA

Montana: some state symbols



flag



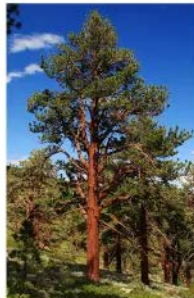
bird: western meadowlark



seal



flower: bitterroot



tree: ponderosa pine

© Encyclopædia Britannica, Inc.

For more information about MONTANA, click here:

<https://montana.gov/>



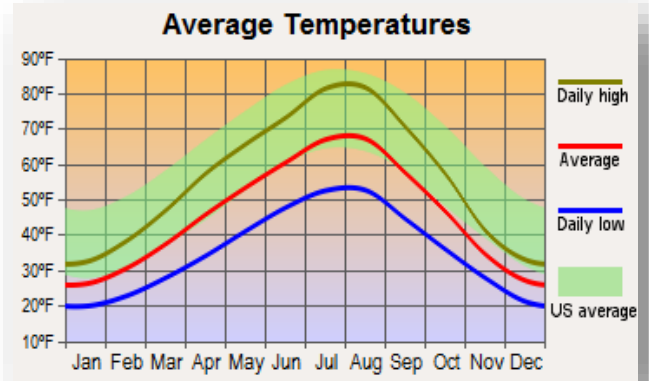
## MONTANA – CLIMATE

<https://www.britannica.com/place/Montana-state/Soils>

The climate of most of Great Plains Montana is semiarid, with hot summers and cold winters. Average annual precipitation is scant, about 13 inches (330 mm); the plains are subject to cycles of drought followed by periods of unusually heavy rainfall and flooding. Total snowfall is light, though frost or freezing occurs more than 200 days of the year. The chinook, a warm winter wind that blows on the plains near the foot of the Rockies, periodically interrupts the bitter cold—January temperatures average in the upper 10s F (about  $-8^{\circ}\text{C}$ )—for which Montana is notorious. In Rocky Mountain Montana there are several different climates arranged one above the other in elevational zones. The climate of the lowest zone—the dry valley bottoms—is similar to that in eastern Montana. The climates of the other zones become progressively cooler, wetter, and snowier with higher elevation. For the most part, Rocky Mountain Montana is forested, and Great Plains Montana is grassland. In the Rocky Mountains and on the mountain outliers the vegetation, like the climate, occurs in elevational zones. In the dry valley bottoms below the lower timberline are grassland, brushland, and open stands of trees called parklands. In the timbered belt on the mountainsides the vegetation is coniferous forest dominated by Douglas fir. The treeless crest lines above the upper timberline are made up of low alpine tundra vegetation, barren rock, and glaciers. In most of Great Plains Montana where the land is not cultivated, the vegetation is shortgrass and mixed-grass prairie. Along the base of the Rockies are foothill prairie grasslands. Many of the hilly areas on the plains are covered by prairie parklands.

## MAJOR CITIES:

Central Montana	Great Falls
Southwest Montana	Bozeman
South Montana	Billings
West Montana	Missoula



# CULTURAL ACTIVITIES

Click on these sites for more cultural activity ideas:

- <https://www.tripadvisor.com/Attractions-g28947-Activities-Montana.html>
- <https://www.atlasobscura.com/things-to-do/montana>
- <https://www.planetware.com/tourist-attractions/montana-usmt.htm>



## Glacier National Park – West Glacier

<https://www.nps.gov/glac/index.htm>

## Skiing at Big Sky Resort – Big Sky

<https://bigskyresort.com/>

## Grizzly and Wolf Discovery Center – West Yellowstone

<https://www.grizzlydiscoveryctr.org/>

## Pioneer Park Nature Center – Lincoln

<http://lincoln.ne.gov/city/parks/naturecenter/>

## Quinn's Hot Springs Resort – Paradise

<https://www.quinnshotsprings.com/>

## Museum of the Rockies - Bozeman

<https://museumoftherockies.org/>

## Museum of Mining – Butte

<https://miningmuseum.org/>

## Lewis and Clark Caverns – Whitehall

<https://fwp.mt.gov/stateparks/lewis-and-clark-caverns/>





## GROCERY SHOPPING

Albertsons	Harvest Foods
Safeway	Costco

Click on this link for more grocery stores:

<http://supermarketpage.com/state/MT/>



## SHOPPING MALLS

Click on this link for a list of shopping malls:

<https://mallseeker.com/montanamalls.aspx>

## PHARMACIES

Albertsons	CVS Pharmacy
Walmart	Walgreens

Click here to locate other pharmacies:

<https://www.goodrx.com/pharmacy-near-me/all/mt>



## POST OFFICES / SHIPPING



Click here for more information:

<http://www.postofficehours.net/state/MT.html>



Click here for more information:

<http://local.fedex.com/en-us/mt/>

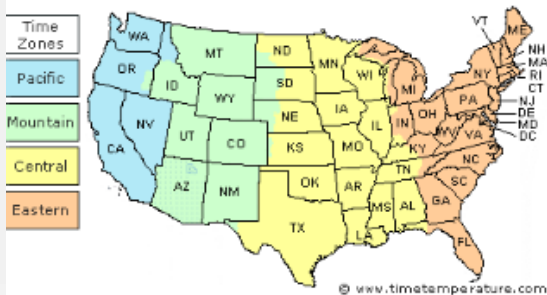


Click here for more information:

<https://locations.theupsstore.com/mt>

## TIME ZONES

Montana is officially in the Mountain Time Zone



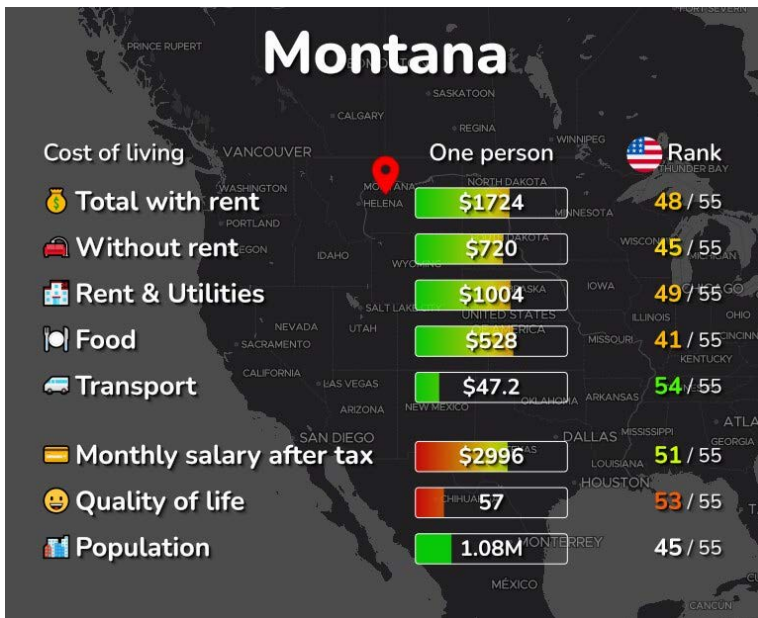
Click here for more information:

[https://www.timetemperature.com/tzus/montana\\_time\\_zone.shtml](https://www.timetemperature.com/tzus/montana_time_zone.shtml)

### Montana Local Time Details

Time Zone Abbreviations	Mountain Standard Time - is abbreviated as MST Mountain Daylight Time - is abbreviated as MDT
UTC - GMT Offset	Montana is GMT/UTC - 7h during Standard Time Montana is GMT/UTC - 6h during Daylight Saving Time
Daylight Saving Time Usage	Montana does utilize Daylight Saving Time.
Daylight Saving Start Date	Montana starts Daylight Saving Time on Sunday March 12, 2023 at 2:00 AM local time.
Daylight Saving End Date	Montana ends Daylight Saving Time on Sunday November 5, 2023 at 2:00 AM local time.

## COST OF LIVING IN MONTANA



Click here for more information:

<https://livingcost.org/cost/united-states/mt>



## MINIMUM WAGE

State	2023 Minimum Wage	2023 Tipped Wage
MT	\$9.95	\$9.95 or \$4.00

\*Tipped wage is based on gross annual sales.

Click here for more information:

<https://www.dol.gov/agencies/whd/minimum-wage/state#mt>

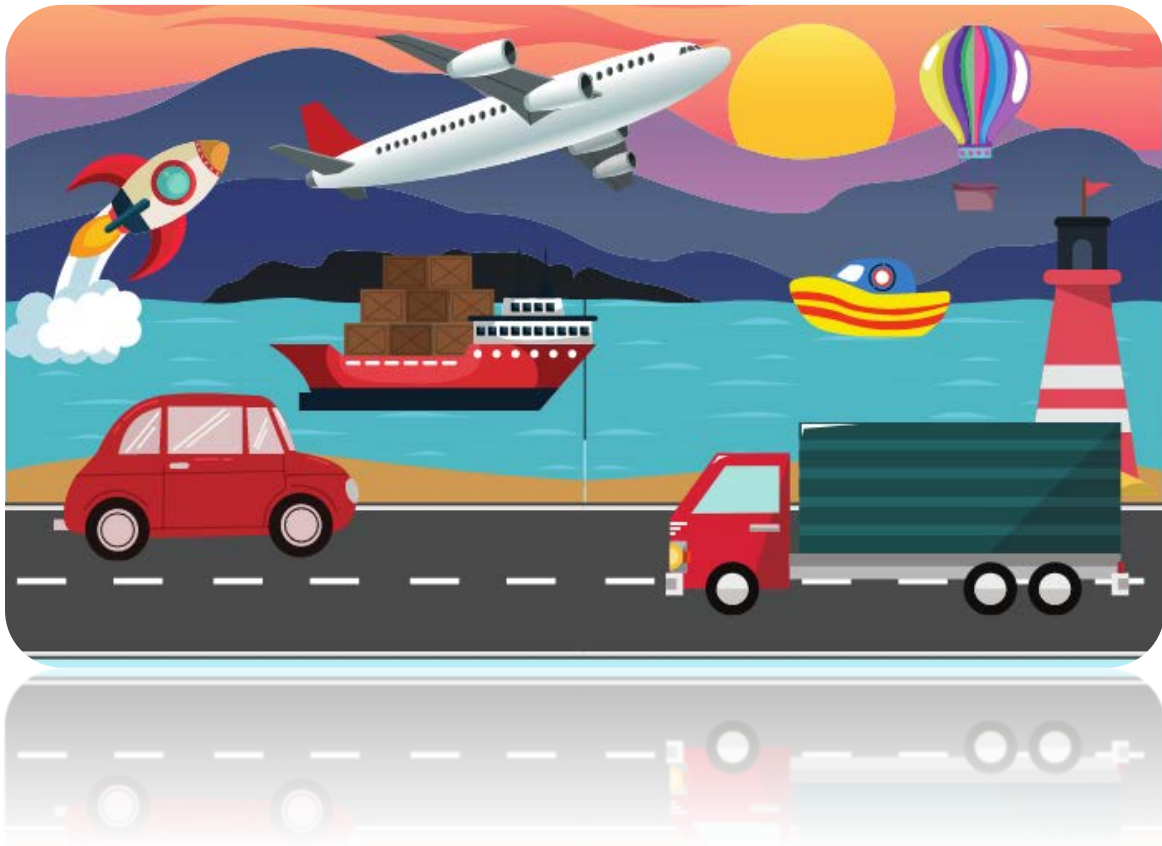
or

<https://www.dol.gov/agencies/whd/state/minimum-wage/tipped#Montana>

## WORKERS' COMPENSATION

Click here for more information:

<https://workerscomp.mt.gov/>



## TRANSPORTATION SERVICES

**Click here for more information:**

<https://www.apta.com/research-technical-resources/public-transportation-links/montana/>

**Ride Sharing:**

[www.uber.com](http://www.uber.com)

[www.lyft.com](http://www.lyft.com)