

SunCatcherStudio.com

NEW HAMPSHIRE

New Hampshire: some state symbols



flag



bird: purple finch

© Birdimages—/Stock
/Getty Images



seal



flower: purple lilac

© arkadiwna/stock.adobe.com



tree: white birch

© ikenat/stock.adobe.com

© Encyclopædia Britannica, Inc.

For more information about NEW HAMPSHIRE, click here:

<http://nh.gov/>



NEW HAMPSHIRE – CLIMATE

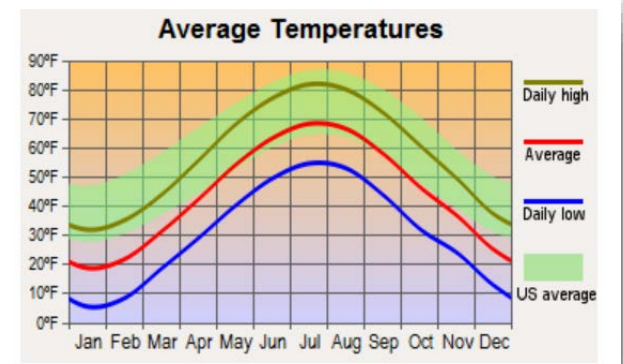
<https://www.britannica.com/place/New-Hampshire-state>

New Hampshire's climate is highly varied. In winter temperatures may drop below 0 °F (–18 °C) for days at a time. Summers are relatively cool, and the mean annual temperature is about 44 °F (7 °C). Annual precipitation is approximately 42 inches (1,070 mm) and is rather evenly distributed over the four seasons. Average snowfall is about 50 inches (1,270 mm) along the coast and 100 inches (2,540 mm) in the northern and western parts of the state. The greatest climatic extremes occur on the summit of Mount Washington, the site of a noted weather observatory. On April 12, 1934, the observatory there recorded a world-record wind speed of 231 miles (372 km) per hour.

New Hampshire experiences a humid continental climate (Köppen climate classification Dfa in some southern areas, Dfb in most of the state, and Dfc Subarctic in some northern highland areas), with warm, humid summers, and long, cold, and snowy winters. Precipitation is fairly evenly distributed all year. The climate of the southeastern portion is moderated by the Atlantic Ocean and averages relatively milder winters (for New Hampshire), while the northern and interior portions experience colder temperatures and lower humidity. Winters are cold and snowy throughout the state, and especially severe in the northern and mountainous areas. Average annual snowfall ranges from 60 inches (150 cm) to over 100 inches (250 cm) across the state.

MAJOR CITIES:

Middle New Hampshire	Franklin, Concord, Manchester
West New Hampshire	Hanover, Lebanon, Keene
East New Hampshire	Conway, Dover, Portsmouth
South New Hampshire	Nashua



CULTURAL ACTIVITIES



Click on these sites for more cultural activity ideas:

<https://www.visit-newhampshire.com/state/70-great-things-to-do-in-new-hampshire/>

<https://www.nhmagazine.com/85-things-to-do-in-nh-this-summer/>

<https://www.boston.com/travel/lifestyle/2017/08/10/100-things-to-do-in-new-hampshire>

Fort Constitution Historic Site – New Castle

<https://www.nhstateparks.org/visit/historic-sites/fort-constitution-historic-site>

Museum of New Hampshire History – Concord

<https://www.nhliving.com/attractions/merrimackvalley/museumnewhampshirehistory/>

Robert Frost Homestead - Derry

<https://www.robertfrostfarm.org/>

Tip Top House – Mt. Washington

<https://lostnewengland.com/2013/09/tip-top-house-mt-washington/>

State Parks

<https://www.nhstateparks.org/find-parks-trails/types-of-nh-state-parks>

Lost River Gorge and Boulder Caves – Woodstock

<https://lostrivergorge.com/>

Russell-Colbath Historic Site - Albany

<https://www.fs.usda.gov/recarea/whitemountain/recreation/outdoorlearning/recarea/?recid=74925&actid=119>

Madame Sherri's Castle – Chesterfield

<https://www.chesterfielddoutdoors.com/>

GROCERY SHOPPING

Hannaford	Stop & Shop
Market Basket	Walmart Supercenter
Hannaford	Shaws

Click on this link for more grocery stores:

<http://supermarketpage.com/state/NH/>



SHOPPING MALLS

Click on this link for a list of shopping malls:

<https://mallseeker.com/new-hampshire-malls.aspx>

PHARMACIES

Walgreens	Walmart
CVS Pharmacy	Rite Aid
Hannaford Brothers	

Click here to locate other pharmacies:

<https://www.goodrx.com/pharmacy-near-me/all/nh>



POST OFFICES / SHIPPING



Click here for more information:

<http://www.postofficehours.net/state/NH.html>



Click here for more information:

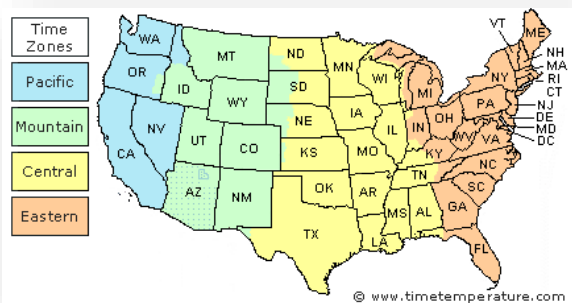
<http://local.fedex.com/nh/>



Click here for more information:

<https://locations.theupsstore.com/nh>

TIME ZONES



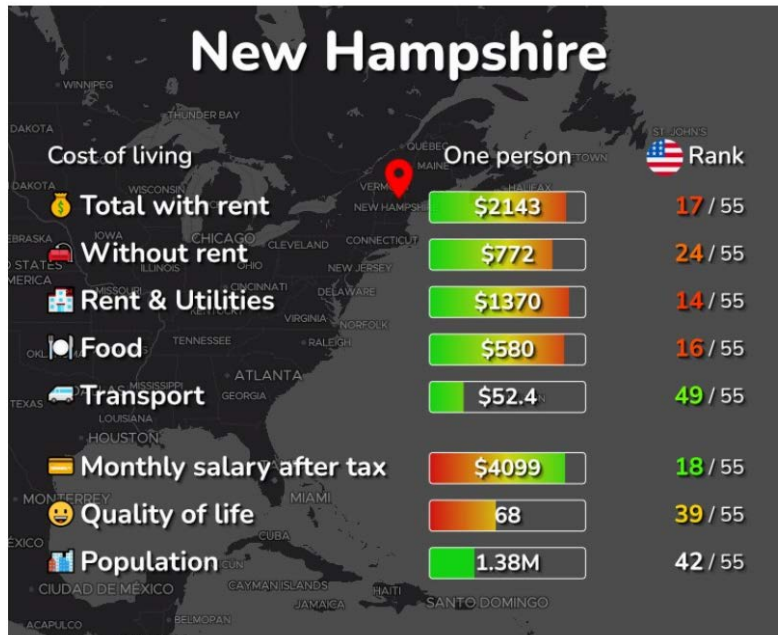
Click here for more information:

<https://www.timeanddate.com/time/zone/usa/newhampshire>

New Hampshire Local Time Details

Time Zone Abbreviations	Eastern Standard Time - is abbreviated as EST Eastern Daylight Time - is abbreviated as EDT
UTC - GMT Offset	New Hampshire is GMT/UTC - 5h during Standard Time New Hampshire is GMT/UTC - 4h during Daylight Saving Time
Daylight Saving Time Usage	New Hampshire does utilize Daylight Saving Time.
Daylight Saving Start Date	New Hampshire starts Daylight Saving Time on Sunday March 12, 2023 at 2:00 AM local time.
Daylight Saving End Date	New Hampshire ends Daylight Saving Time on Sunday November 5, 2023 at 2:00 AM local time.

COST OF LIVING IN NEW HAMPSHIRE



Click here for more information:

<https://www.eriari.com/cost-of-living/united-states/new-hampshire>



MINIMUM WAGE

State	2023 Minimum Wage	2023 Tipped Wage
NH	\$7.25	\$3.99

Click here for more information:

<https://www.dol.gov/agencies/whd/minimum-wage/state#nh>

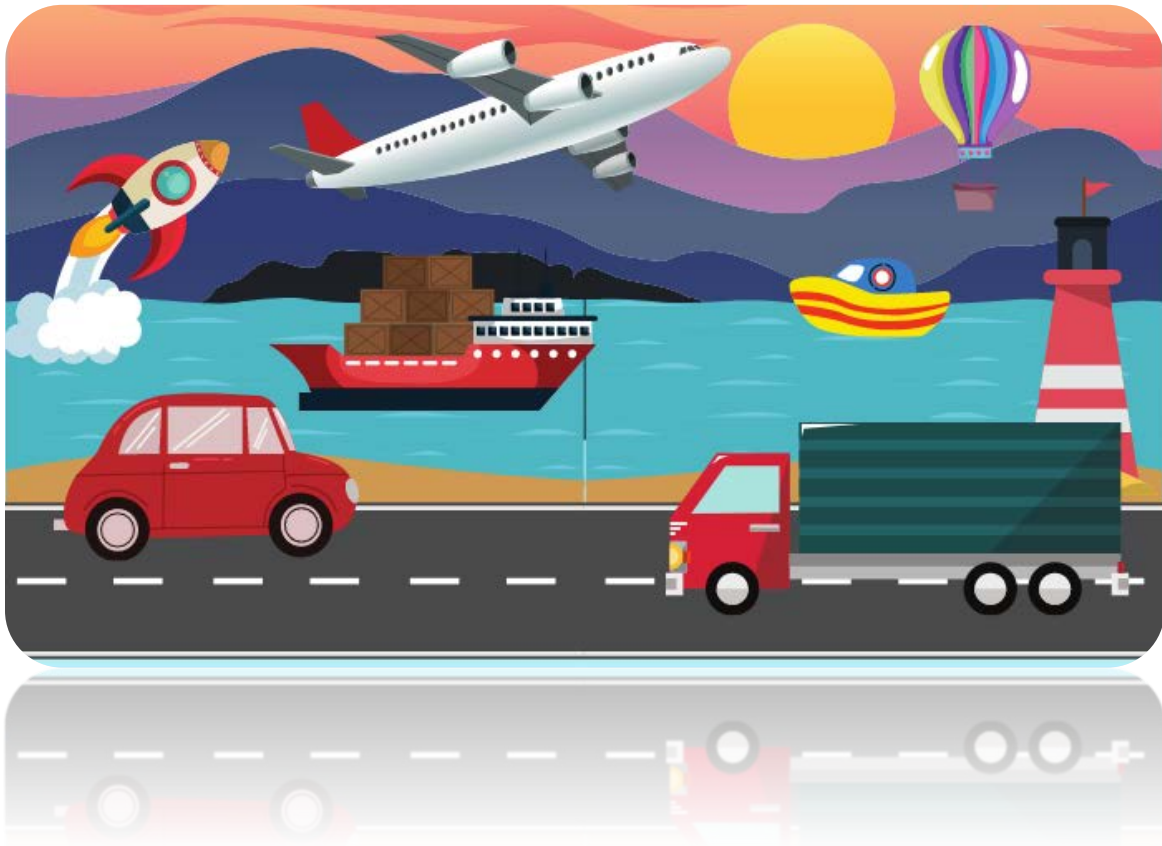
or

<https://www.dol.gov/agencies/whd/state/minimum-wage/tipped#NewHampshire>

WORKERS' COMPENSATION

Click here for more information:

<https://www.nh.gov/labor/workers-comp/>



TRANSPORTATION SERVICES

Click here for more information:

<https://www.apta.com/research-technical-resources/public-transportation-links/new-hampshire/>

Ride Sharing:

www.uber.com

www.lyft.com