



# NEW JERSEY

## New Jersey: some state symbols



flag



bird: eastern goldfinch



tree: red oak



seal



flower: violet

© Encyclopædia Britannica, Inc.

For more information about New Jersey, click here:

<https://www.nj.gov/>



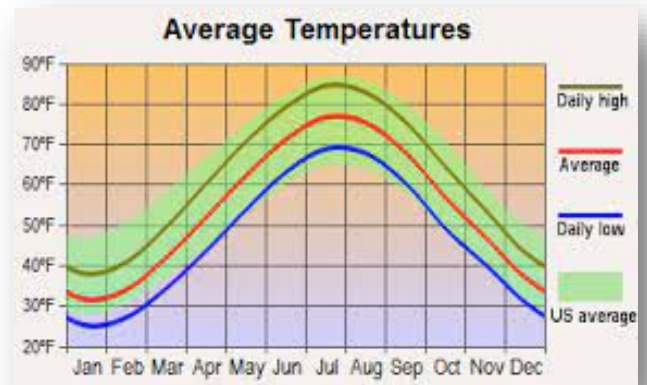
## NEW JERSEY – CLIMATE

<https://www.britannica.com/place/New-Jersey>

New Jersey possesses a moderate climate with warm, humid summers and relatively cold winters. The fourth-smallest state in the country, New Jersey's total land area covers 7,419 square miles; at its maximum, the state measures 170 miles from north to south, and 70 miles from east to west. Despite its modest size, climactic variations exist in different geographic regions of New Jersey, and various atmospheric and oceanic elements impact the state's climate. In Nashville, Tennessee, snowfall varies and is more prevalent in East Tennessee than in the western section; Nashville gets about 10 in (25.4 cm) a year, Memphis only 5 in (12.7 cm). Precipitation in New Jersey averages 45 inches per year. The southeast coast receives the least amount of precipitation, around 40 inches, while the north-central region receives the most precipitation, nearly 51 inches. Measurable precipitation falls about 120 days each year, with autumn being the driest season. The driest location in New Jersey is Atlantic City, while the wettest is Morris Plains in the central part of the state. Thunderstorms occur in most locales approximately 25 to 30 times per year, with more storms near the coast than farther inland. The northwest experiences relatively cold winters, with average January temperatures below 28 °F (−2 °C). Relatively mild conditions prevail in the south, with average winter temperatures above freezing. Summers are relatively hot throughout the state, with averages for July ranging from about 70 °F (21 °C) in the northwest to above 76 °F (24 °C) in the southwest. Moist conditions prevail, with seasonally well-distributed precipitation averaging from 44 inches to more than 52 inches (1,120 to 1,320 mm).

## MAJOR CITIES:

Middle New Jersey	Asbury Park
West New Jersey	Trenton, Camden, Cherry Hill
East New Jersey	Toms River, Edison, Atlantic City
South New Jersey	Vineland, Wildwood
North New Jersey	Jersey City, Newark



# CULTURAL ACTIVITIES

Click on these sites for more cultural activity ideas:

- [https://www.tripadvisor.com/Attractions-g28951-Activities-New\\_Jersey.html](https://www.tripadvisor.com/Attractions-g28951-Activities-New_Jersey.html)
- <https://www.atlasobscura.com/things-to-do/new-jersey>
- <https://www.visitnj.org/article/10-free-attractions-new-jersey>

**Cape May County Park and Zoo – Cape May County**

<http://www.capemaycountynj.gov/1008/Park-Zoo>

**Princeton University Art Museum – Princeton**

<https://artmuseum.princeton.edu/>

**The Drumthwacket Foundation– Princeton**

<https://drumthwacket.org/>

**Heritage Glass Museum – Glassboro**

<https://www.heritageglassmuseum.com/>

**Howell Living History Farm – Hopewell Twp.**

<https://www.howellfarm.org/>

**Tennessee Aquarium – Navesink**

<https://www.lighthousefriends.com/light.asp?ID=376>

**Bridgeton Hall of Fame – Bridgeton**

<http://www.co.cumberland.nj.us/allsportsmuseum>

**Six Flags Great Adventure – Township**

<https://www.sixflags.com/greatadventure>



# GROCERY SHOPPING

A & P Food Stores	C Town
Acme Markets	Costco
Aldi	Foodtown
BJ's Wholesale Club	Shoprite
Bravo Supermarket	Wawa Food Markets

**Click on this link for more grocery stores:**

<http://supermarketpage.com/state/NJ/>



# SHOPPING MALLS

**Click on this link for a list of shopping malls:**

<https://mallseeker.com/new-jerseymalls.aspx>

# PHARMACIES

ACME Sav-On	Walgreens
Walmart	CVS Pharmacy
Rite Aid	Stop n Shop

**Click here to locate other pharmacies:**

<https://www.goodrx.com/pharmacy-near-me/all/nj>



## POST OFFICES / SHIPPING



Click here for more information:

<http://www.postofficehours.net/state/NJ.html>



Click here for more information:

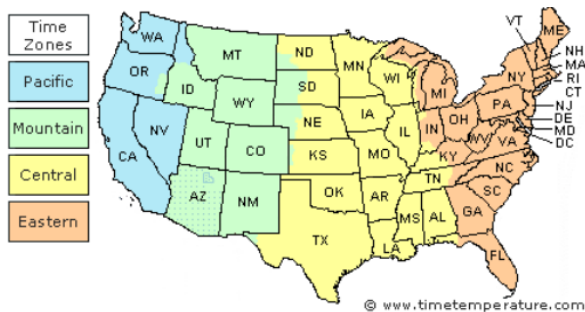
<http://local.fedex.com/en-us/nj/>



Click here for more information:

<https://locations.theupsstore.com/nj>

## TIME ZONES



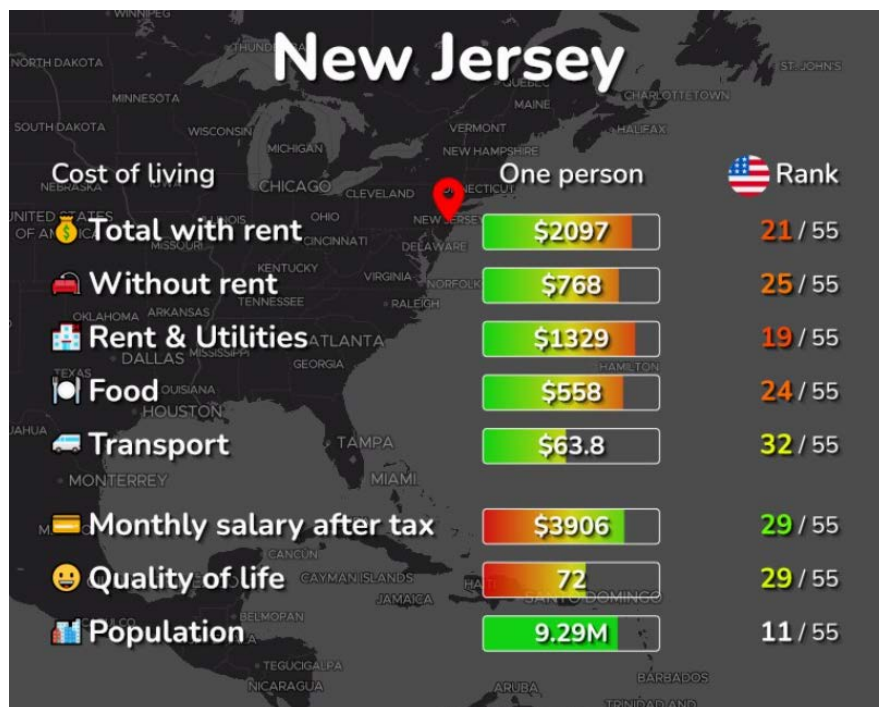
Click here for more information:

[https://www.timetemperature.com/tzus/new\\_jersey\\_time\\_zone.shtml](https://www.timetemperature.com/tzus/new_jersey_time_zone.shtml)

New Jersey Local Time Details

Time Zone Abbreviations	Eastern Standard Time - is abbreviated as EST Eastern Daylight Time - is abbreviated as EDT
UTC - GMT Offset	New Jersey is GMT/UTC - 5h during Standard Time New Jersey is GMT/UTC - 4h during Daylight Saving Time
Daylight Saving Time Usage	New Jersey does utilize Daylight Saving Time.
Daylight Saving Start Date	New Jersey starts Daylight Saving Time on Sunday March 12, 2023 at 2:00 AM local time.
Daylight Saving End Date	New Jersey ends Daylight Saving Time on Sunday November 5, 2023 at 2:00 AM local time.

# COST OF LIVING IN NEW JERSEY



Click here for more information:

<https://www.eriei.com/cost-of-living/united-states/new-jersey>



## MINIMUM WAGE

State	2023 Minimum Wage	2023 Tipped Wage
NJ	\$14.13	\$5.26

Click here for more information:

<https://www.dol.gov/agencies/whd/minimum-wage/state#nj>

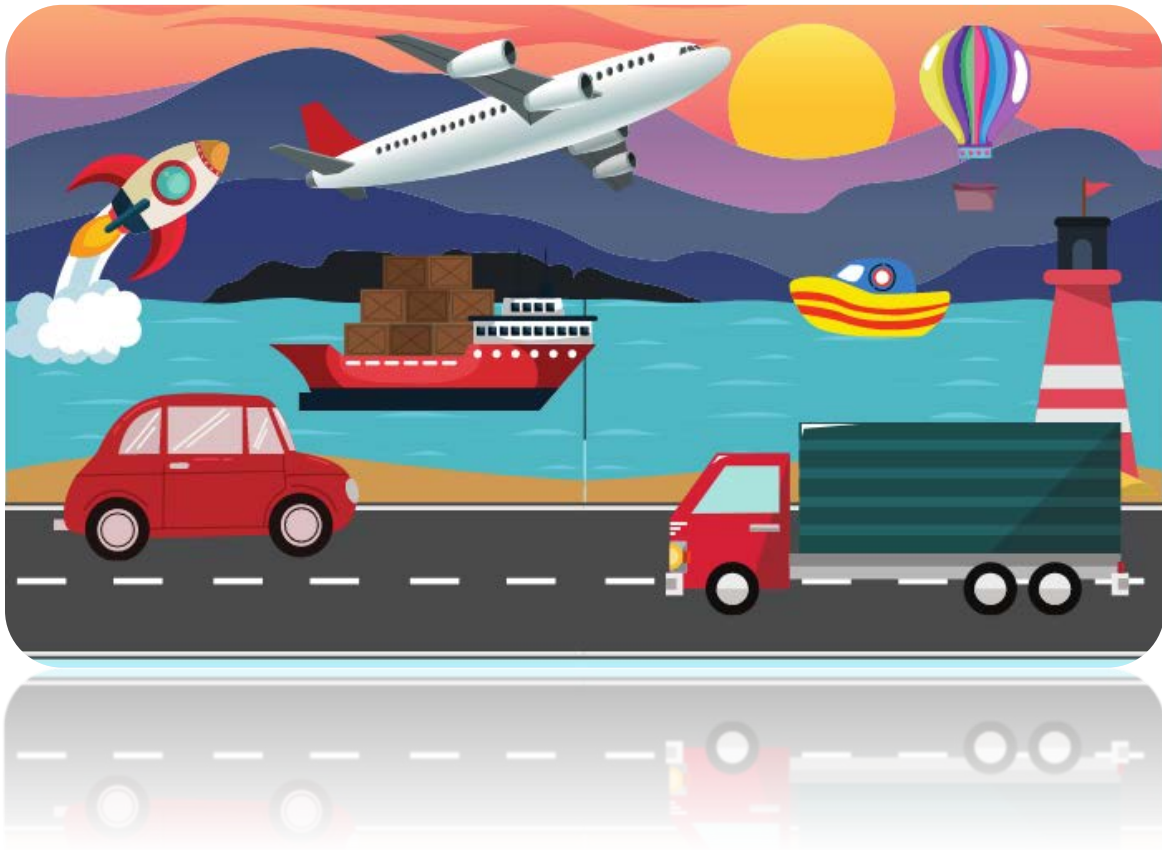
or

<https://www.dol.gov/agencies/whd/state/minimum-wage/tipped#NewJersey>

## WORKERS' COMPENSATION

Click here for more information:

[https://www.nj.gov/labor/wc/wc\\_index.html](https://www.nj.gov/labor/wc/wc_index.html)



## TRANSPORTATION SERVICES

**Click here for more information:**

<https://www.apta.com/research-technical-resources/public-transportation-links/new-jersey/>

**Ride Sharing:**

[www.uber.com](http://www.uber.com)

[www.lyft.com](http://www.lyft.com)