

SunCatcherStudio.com

SOUTH CAROLINA

South Carolina: some state symbols



flag



bird: Carolina wren

© Brian Kushner/
Dreamstime.com



seal



flower: yellow jessamine

© emer1940—iStock/
Getty Images



tree: sabal palmetto

© Redwood8/Dreamstime.com

© Encyclopædia Britannica, Inc.

For more information about SOUTH CAROLINA, click here:

<https://sc.gov/>



SOUTH CAROLINA – CLIMATE

<https://www.dnr.sc.gov/climate/sco/Publications/SCClimateOverview.pdf>

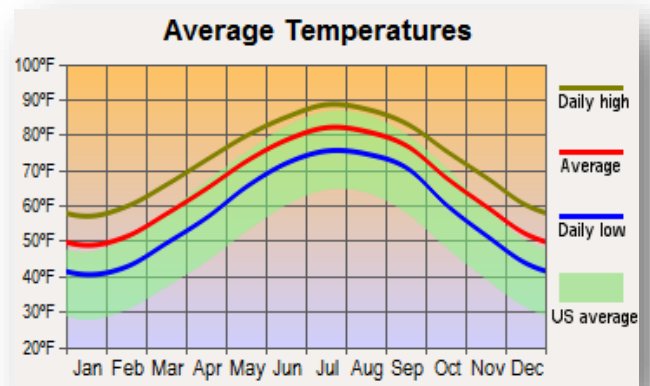
South Carolina has a humid, subtropical climate. Average temperatures range from 68°F (20°C) on the coast to 58°F (14°C) in the northwest, with colder temperatures in the mountains. Summers are hot: in the central part of the state, temperatures often exceed 90°F (32°C), with a record of 111°F (44°C) set at Camden on 28 June 1954. In the northwest, temperatures of 32°F (0°C) or less occur from 50 to 70 days a year; the record low for the state is –20°F (–29°C), set at Caesars Head Mountain on 18 January 1977. The daily mean temperature at Columbia is 44°F (7°C) in January and 81°F (27°C) in July.

Rainfall is ample throughout the state, averaging 48.3 in (122.7 cm) annually at Columbia (1971– 2000) and ranging from 38 in (97 cm) in the central region to 52 in (132 cm) in the upper piedmont. Snow and sleet (averaging 2 in/5 cm a year at Columbia) occur about three times annually, but more frequently and heavily in the mountains.

Tornadoes happen mostly in the spring, with a secondary peak in November. Hail and damaging winds often occur in summertime thunderstorms. Tornadoes are very uncommon in the summer unless a tropical disturbance were to spawn one.

MAJOR CITIES:

Central South Carolina	Columbia
Southeast South Carolina	Charleston
North South Carolina	Rock Hill
Northwest South Carolina	Greenville



CULTURAL ACTIVITIES

Click on these sites for more cultural activity ideas:

- <https://www.busytourist.com/things-to-do-in-south-carolina/>
- <https://www.planetware.com/tourist-attractions/south-carolina-ussc.htm>
- <https://www.touropia.com/best-things-to-do-in-south-carolina/>

Charleston Museum- Charleston

<https://www.charlestonmuseum.org/>

Waterfront Park - Charleston

<https://www.charleston-sc.com/charleston-waterfront-park.html>

Caesar's Head State Park - Greenville

<https://southcarolinaparks.com/caesars-head>

Paris Mountain State Park - Greenville

<https://southcarolinaparks.com/paris-mountain>

Riverbanks Zoo and Garden - Columbia

<https://www.riverbanks.org/>

Columbia Canal and Riverfront Park - Columbia

<https://scgreatoutdoors.com/park-riverfront.html>

Museum of York County - Rock Hill

<http://www.chmuseums.org/myco/>

Hilton Head Pirate's Island Golf Adventure - Hilton Head

<https://www.piratesislandgolf.com/our-locations/hilton-head-sc-pirates-island/>

Myrtle Beach Sky Wheel- Myrtle Beach

<https://skywheelmb.com/>



GROCERY SHOPPING

Aldi	Ingles Market
Bi-Lo	Kroger
Food Lion	Piggly Wiggly
Harris Teeter	Publix
Wal-Mart Supermarket	

Click on this link for more grocery stores:

<http://supermarketpage.com/state/SC/>



SHOPPING MALLS

Click on this link for a list of shopping malls:

<https://mallseeker.com/south-carolina-malls.aspx>

PHARMACIES

CVS Pharmacy	Walgreens Pharmacy
Wal-Mart Pharmacy	Harris Teeter
Target	

Click here to locate other pharmacies:

<https://www.goodrx.com/pharmacy-near-me/all/sc>



POST OFFICES / SHIPPING



Click here for more information:

<http://www.postofficehours.net/state/SC.html>



Click here for more information:

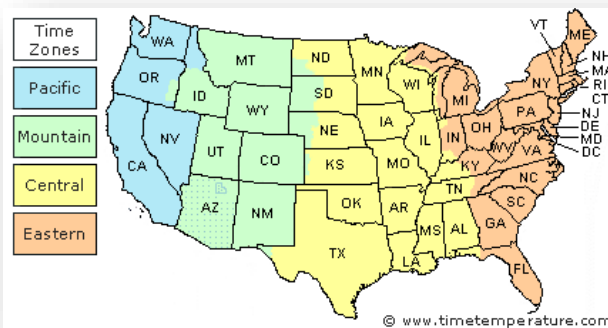
<https://local.fedex.com/en-us/sc>



Click here for more information:

<https://locations.theupsstore.com/sc>

TIME ZONES



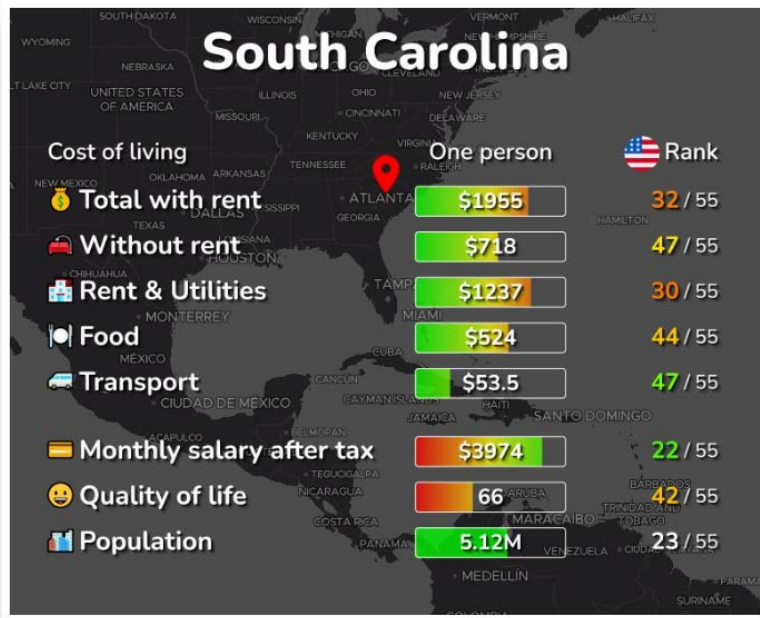
Click here for more information:

<https://www.timetemperature.com/tzus/south-carolina-time-zone.shtml>

South Carolina Local Time Details

Time Zone Abbreviations	Eastern Standard Time - is abbreviated as EST Eastern Daylight Time - is abbreviated as EDT
UTC - GMT Offset	South Carolina is GMT/UTC - 5h during Standard Time South Carolina is GMT/UTC - 4h during Daylight Saving Time
Daylight Saving Time Usage	South Carolina does utilize Daylight Saving Time.
Daylight Saving Start Date	South Carolina starts Daylight Saving Time on Sunday March 12, 2023 at 2:00 AM local time.
Daylight Saving End Date	South Carolina ends Daylight Saving Time on Sunday November 5, 2023 at 2:00 AM local time.

COST OF LIVING IN SOUTH CAROLINA



Click here for more information:

<https://livingcost.org/cost/united-states/sc>



MINIMUM WAGE

State	2023 Minimum Wage	2023 Tipped Wage
SC	\$7.25	\$2.13

Click here for more information:

<https://www.dol.gov/agencies/whd/minimum-wage/state#sc>

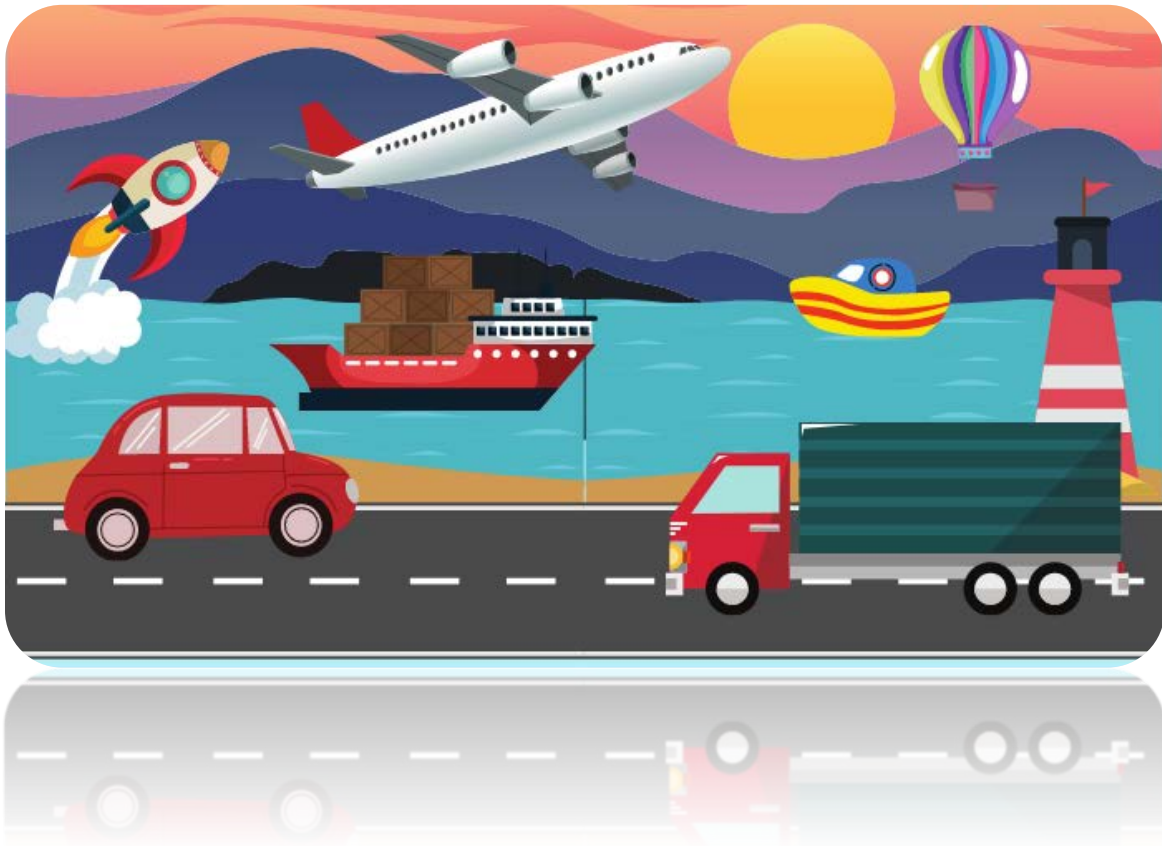
or

<https://www.dol.gov/agencies/whd/state/minimum-wage/tipped#SouthCarolina>

WORKERS' COMPENSATION

Click here for more information:

<https://wcc.sc.gov/>



TRANSPORTATION SERVICES

Click here for more information:

<https://www.apta.com/research-technical-resources/public-transportation-links/south-carolina/>

Ride Sharing:

www.uber.com

www.lyft.com