

TENNESSEE

Tennessee: some state symbols



flag



bird: northern mockingbird



seal



flower: iris



tree: tulip poplar

© Encyclopædia Britannica, Inc.

For more information about TENNESSEE, click here:

<https://www.tn.gov/>



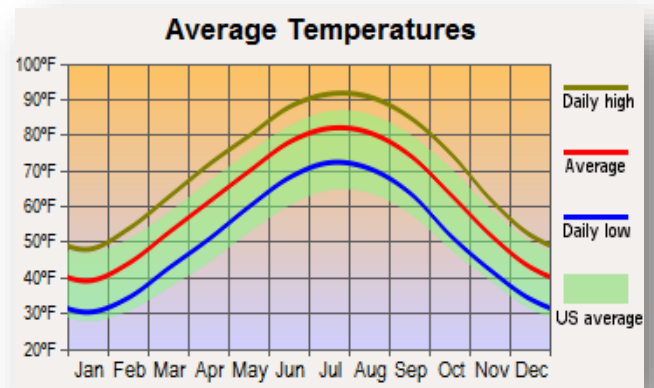
TENNESSEE – CLIMATE

<https://www.britannica.com/place/Tennessee/Climate>

Generally, Tennessee has a temperate climate, with warm summers and mild winters. However, the state's varied topography leads to a wide range of climatic conditions. The warmest parts of the state, with the longest growing season, are the Gulf Coastal Plain, the Central Basin, and the Sequatchie Valley. In the Memphis area in the southwest, the average date of the last killing frost is 20 March, and the growing season is about 235 days. Memphis has an annual mean temperature of 62°F (17°C), 40°F (4°C) in January, and 83°F (28°C) in July. In the Nashville area, the growing season lasts about 225 days. Nashville has an annual mean of 59°F (15°C), ranging from 36°F (2°C) in January to 79°F (26°C) in July. The Knoxville area has a growing season of 220 days. The city's annual mean temperature is 60°F (16°C), with averages of 41°F (5°C) in January and 78°F (26°C) in July. In some parts of the mountainous east, where the temperatures are considerably lower, the growing season is as short as 130 days. The record high temperature for the state is 113°F (45°C), set at Perryville on 9 August 1930; the record low, –32°F (–36°C), was registered at Mountain City on 30 December 1917. Severe storms occur infrequently. The greatest rainfall occurs in the winter and early spring, especially March; the early fall months, particularly September and October, are the driest. Average annual precipitation (1971–2000) was 54.7 in (138.9 cm) in Memphis and 48 in (122 cm) in Nashville. Snowfall varies and is more prevalent in East Tennessee than in the western section; Nashville gets about 10 in (25.4 cm) a year, Memphis only 5 in (12.7 cm).

MAJOR CITIES:

Middle Tennessee – Nashville
 West Tennessee – Memphis
 East Tennessee – Knoxville
 South Tennessee – Chattanooga



CULTURAL ACTIVITIES

Click on these sites for more cultural activity ideas:

- <https://www.inspirock.com/united-states/cultural-activities-in-tennessee>
- <https://vacationidea.com/destinations/best-things-to-do-in-tennessee.html>
- <https://www.tnvacation.com/calendar>



Beale Street Historic District – Memphis

<http://www.bealestreet.com/>

Elvis Presley's Graceland – Memphis

www.graceland.com

Adventure Science Center – Nashville

www.adventuresci.org

Country Hall of Fame & Museum – Nashville

www.countrymusichalloffame.org

Lookout Mountain Incline Railway – Chattanooga

www.ridetheincline.com

Tennessee Aquarium – Chattanooga

www.tnaqua.org

Knoxville Zoo – Knoxville

www.zooknoxville.org

Dollywood – Pigeon Forge

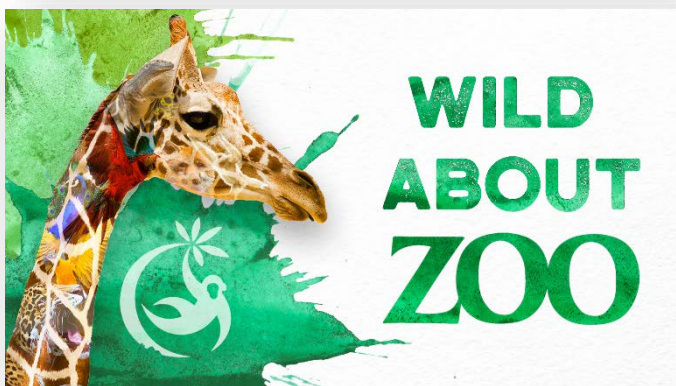
www.dollywood.com

Smoky Mountains – Gatlinburg

www.gatlinburg.com/explore/national-park/

World's Largest Rubik's Cube – Knoxville

www.visitknoxville.com/listings/rubiks-cube/1674/



GROCERY SHOPPING

Aldi	Bi-Lo
Costco	Food Lion
Kroger	Piggly Wiggly
Publix	Save A Lot
Wal-Mart Supermarket	

Click on this link for more grocery stores:

<http://supermarketpage.com/state/TN/>



SHOPPING MALLS

Click on this link for a list of shopping malls:

<https://mallseeker.com/tennessee-malls.aspx>

PHARMACIES

Kroger	Walgreens
Walmart	CVS Pharmacy
Publix Pharmacy	

Click here to locate other pharmacies:

<https://www.goodrx.com/pharmacy-near-me/all/tn>



POST OFFICES / SHIPPING



Click here for more information:

<http://www.postofficehours.net/state/TN.html>



Click here for more information:

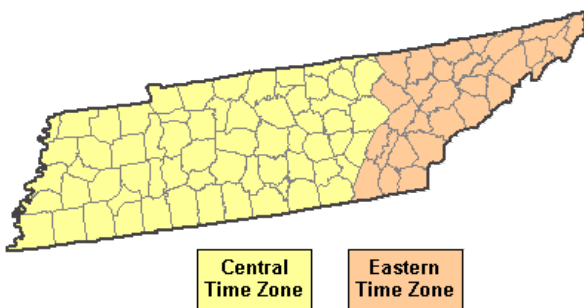
<https://local.fedex.com/en-us/tn>



Click here for more information:

<https://locations.theupsstore.com/tn>

TIME ZONES



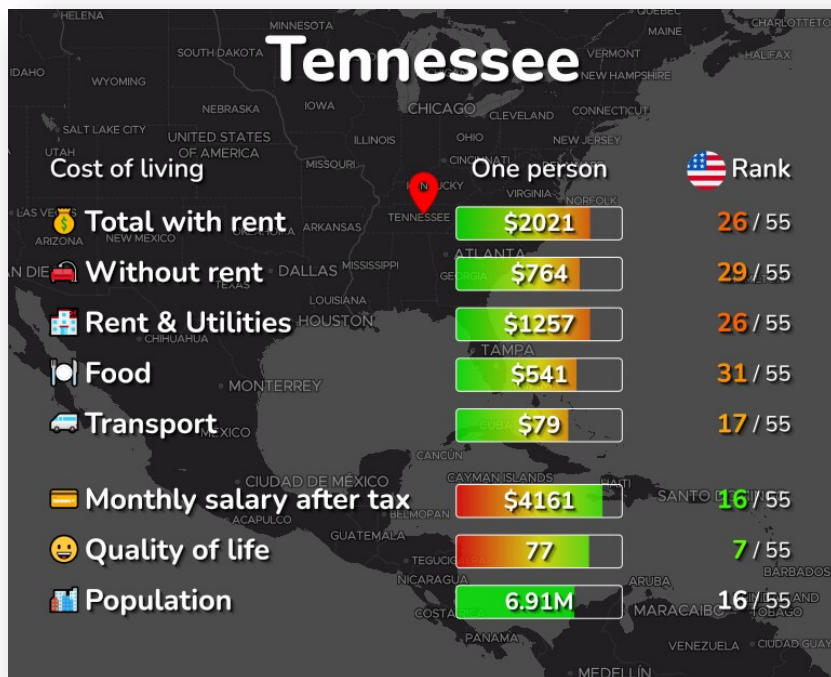
Click here for more information:

https://www.timetemperature.com/tzus/tennessee_time_zone.shtml

Tennessee Local Time Details

Eastern Time Zone Abbreviations	Eastern Standard Time - is abbreviated as EST Eastern Daylight Time - is abbreviated as EDT
Central Time Zone Abbreviations	Central Standard Time - is abbreviated as CST Central Daylight Time - is abbreviated as CDT
Eastern Time Zone UTC - GMT Offset	Eastern Time Zone is GMT/UTC - 5h during Standard Time Eastern Time Zone is GMT/UTC - 4h during Daylight Saving Time
Central Time Zone UTC - GMT Offset	Central Time Zone in Tennessee is GMT/UTC - 6h during Standard Time Central Time Zone in Tennessee is is GMT/UTC - 5h during Daylight Saving Time
Daylight Saving Time Usage	Tennessee does utilize Daylight Saving Time.
Daylight Saving Start Date	Tennessee starts Daylight Saving Time on Sunday March 12, 2023 at 2:00 AM local time.
Daylight Saving End Date	Tennessee ends Daylight Saving Time on Sunday November 5, 2023 at 2:00 AM local time.

COST OF LIVING IN TENNESSEE



Click here for more information:

<https://livingcost.org/cost/united-states/tn>



MINIMUM WAGE

State	2023 Minimum Wage	2023 Tipped Wage
TN	\$7.25	\$2.13

Click here for more information:

<https://www.dol.gov/agencies/whd/minimum-wage/state#tn>

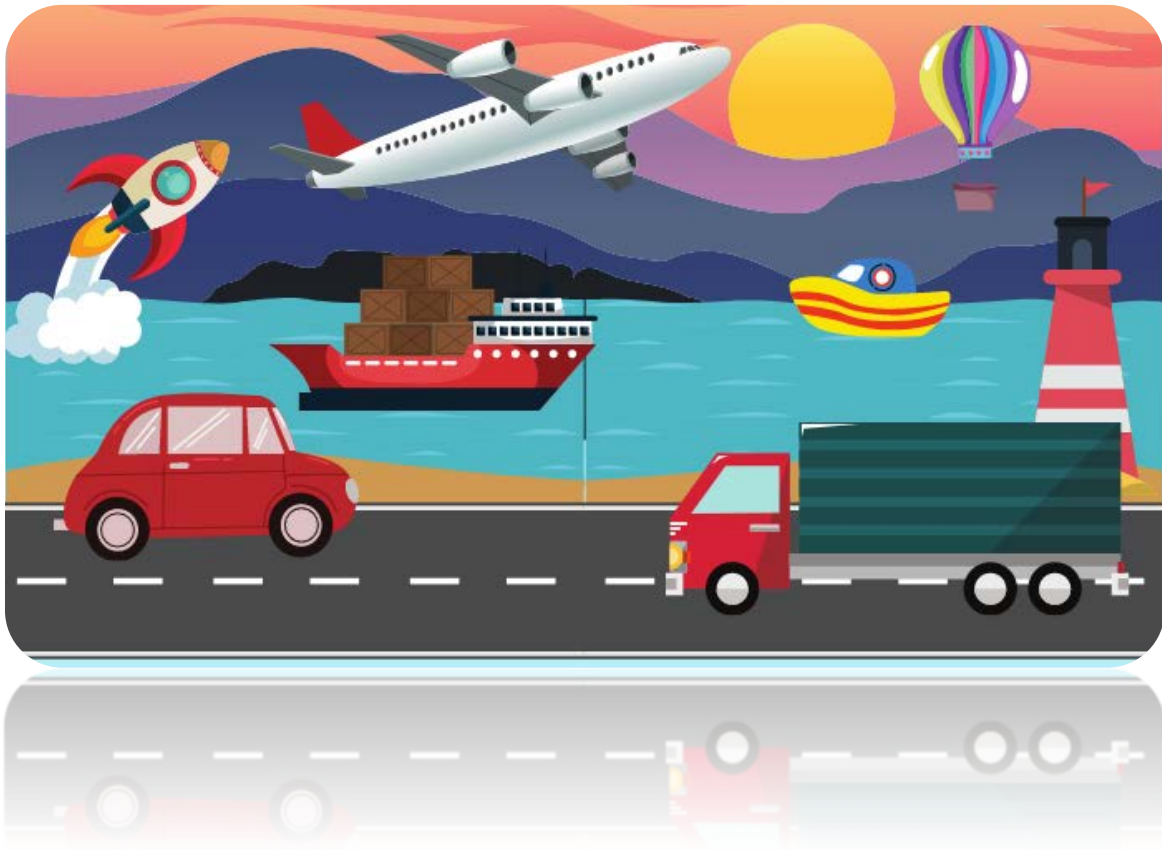
or

<https://www.dol.gov/agencies/whd/state/minimum-wage/tipped#Tennessee>

WORKERS' COMPENSATION

Click here for more information:

<https://www.tn.gov/workforce/injuries-at-work.html>



TRANSPORTATION SERVICES

Click here for more information:

<https://www.apta.com/research-technical-resources/public-transportation-links/tennessee/>

Ride Sharing:

www.uber.com

www.lyft.com