

SunCatcherStudio.com

UTAH

Utah: some state symbols



flag



bird: California seagull

© Shutterstock Images



tree: quaking aspen

Charles Hamnum / Encyclopædia Britannica, Inc.



seal



flower: sego lily

© MichaelSy/Shutterstock.com

© Encyclopædia Britannica, Inc.

For more information about UTAH, click here:

<https://utah.gov/>



UTAH – CLIMATE

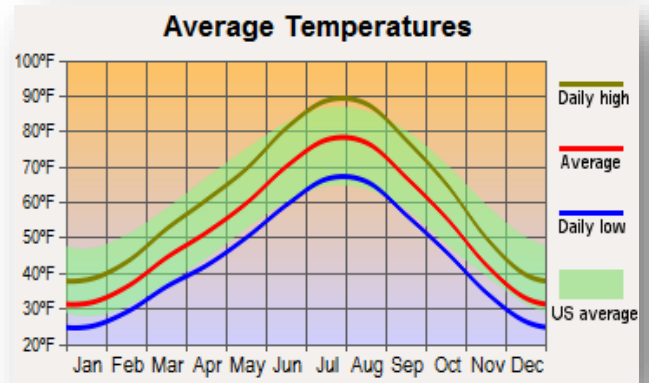
<https://www.britannica.com/place/Utah/Climate>

Utah's geographic location in relation to the mountain systems of the West, which divert much of the area's precipitation, makes it basically an arid state. Southwestern Utah, which has a warm, almost dry, subtropical climate, however, is referred to as Utah's "Dixie." The southern part of the Colorado Plateau has cool, dry winters and wet summers, with frequent thunderstorms. Northern Utah is affected by air masses from the northern Pacific Ocean and continental polar air; it receives most of its precipitation in the cool season.

The state has four distinct seasons. The average temperature in July is in the low 70s F (about 21 °C). In winter, the average temperature is slightly below freezing except in Dixie. Daily temperatures vary widely: when Salt Lake City has July highs of 90 °F (32 °C) or above, nighttime temperatures range from the mid-50s to the mid-60s F (about 13 to 18 °C). Relatively low humidity prevails; average precipitation is about 11 inches (280 mm) a year, varying from less than 8 inches (200 mm) over the Great Salt Lake Desert to 50 inches (1,280 mm) in the Wasatch Mountains. The average annual snowfall is about 4.5 feet (1.5 metres), ranging from none in the southwestern valleys to more than 10 feet (3 metres) at ski resorts. The average growing season is 131 days.

MAJOR CITIES:

| | |
|-------------------|---------------------------|
| Northern Utah | Salt Lake City, Park City |
| Central Utah | Sevier Desert |
| Eastern Utah | Uinta Mountains, Vernal |
| Southeastern Utah | Moab |
| Southwestern Utah | Kanab, St. George |



CULTURAL ACTIVITIES

Click on these sites for more cultural activity ideas:

- <http://www.tripadvisor.com/Tourism-g28965-Utah-Vacations.html>
- <https://www.visitutah.com/things-to-do/events/>
- <https://www.nowplayingutah.com/categories/festivals-special-events/>

Natural History Museum of Utah - Salt Lake City

<https://nhmu.utah.edu/>

Corona Arch - Moab

<https://utah.com/hiking/arches-national-park/bowtie-corona-arches>

Canyonland National Park - Moab

<https://www.nps.gov/cany/index.htm>

Deer Valley Resort - Park City

<https://www.deervalley.com/>

Park City Museum - Park City

<https://parkcityhistory.org/>

Rosenbruch Wildlife Museum - St. George

<http://rosenbruch.org/>

Kanab Trailhead - Kanab

<https://www.alltrails.com/us/utah/kanab>

Vernal Fall - Vernal

<https://www.alltrails.com/us/utah/vernal/waterfall>

Bryce Canyon National Park – Southern Utah

<https://www.nps.gov/brca/index.htm>



GROCERY SHOPPING

| | |
|------------------|---------------------|
| Albertsons | Schreiber Food Inc. |
| Costco | Smiths Food & Drug |
| Dans Supermarket | Stop & Shop |

Click on this link for more grocery stores:

<http://supermarketpage.com/state/UT/>



SHOPPING MALLS

Click on this link for a list of shopping malls:

<https://mallseeker.com/utah-malls.aspx>

PHARMACIES

| | |
|-----------|--------------|
| Walgreens | Smith's |
| Walmart | CVS Pharmacy |
| Costco | |

Click here to locate other pharmacies:

<https://www.goodrx.com/pharmacy-near-me/all/ut>



POST OFFICES / SHIPPING



Click here for more information:

<http://www.postofficehours.net/state/UT.html>



Click here for more information:

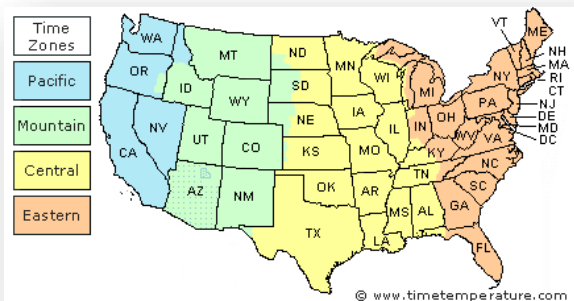
<https://local.fedex.com/en-us/ut>



Click here for more information:

<https://locations.theupsstore.com/ut>

TIME ZONES



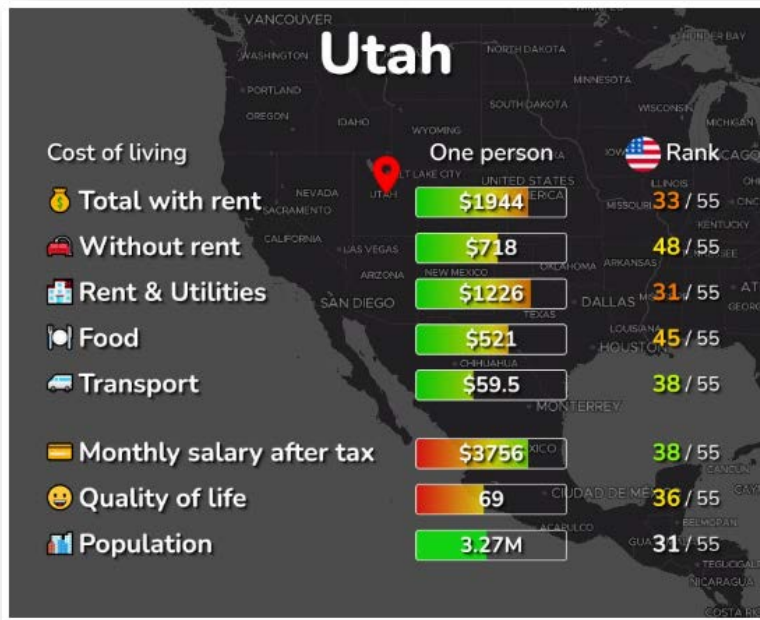
Click here for more information:

https://www.timetemperature.com/tzus/utah_time_zone.shtml

Utah Local Time Details

| | |
|----------------------------|--|
| Time Zone Abbreviations | Mountain Standard Time - is abbreviated as MST Mountain Daylight Time - is abbreviated as MDT |
| UTC - GMT Offset | Utah is GMT/UTC - 7h during Standard Time Utah is GMT/UTC - 6h during Daylight Saving Time |
| Daylight Saving Time Usage | Utah does utilize Daylight Saving Time. |
| Daylight Saving Start Date | Utah starts Daylight Saving Time on Sunday March 12, 2023 at 2:00 AM local time. |
| Daylight Saving End Date | Utah ends Daylight Saving Time on Sunday November 5, 2023 at 2:00 AM local time. |

COST OF LIVING IN UTAH



Click here for more information:

<https://livingcost.org/cost/united-states/ut>



MINIMUM WAGE

| State | 2023 Minimum Wage | 2023 Tipped Wage |
|-------|-------------------|------------------|
| UT | \$7.25 | \$2.13 |

Click here for more information:

<https://www.dol.gov/agencies/whd/minimum-wage/state#ut>

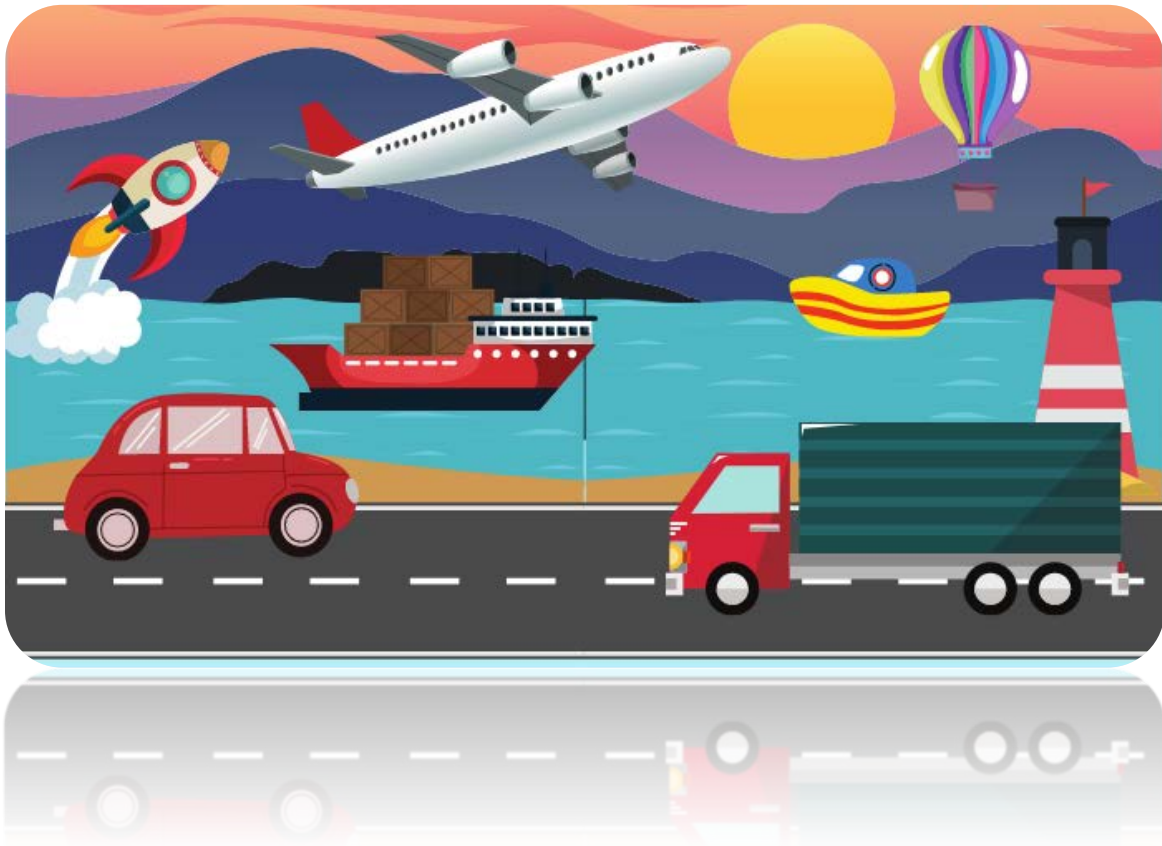
or

<https://www.dol.gov/agencies/whd/state/minimum-wage/tipped#Utah>

WORKERS' COMPENSATION

Click here for more information:

<https://insurance.utah.gov/consumer/other/workers-comp>



TRANSPORTATION SERVICES

Click here for more information:

<https://www.apta.com/research-technical-resources/public-transportation-links/utah/>

Ride Sharing:

www.uber.com

www.lyft.com