



SunCatcherStudio.com

WISCONSIN

Wisconsin: some state symbols



flag



AdstockRF

bird: American robin



seal



© Nicholas A. Tonelli (CC BY 2.0)

flower: wood violet



Bruce Marlin

tree: sugar maple

© Encyclopædia Britannica, Inc.

For more information about WISCONSIN, click here:

www.wisconsin.gov



WISCONSIN – CLIMATE

<https://statesummaries.ncics.org/chapter/wi/>

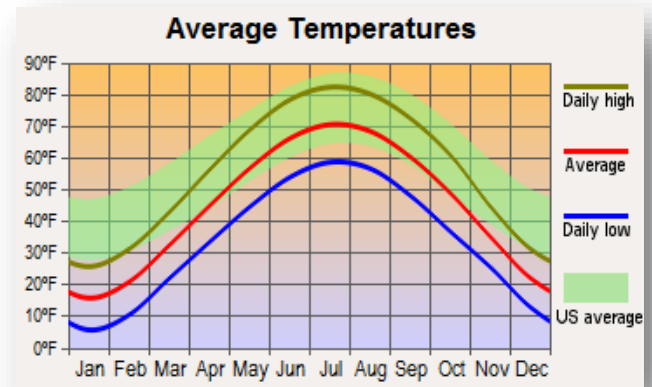
Wisconsin's location in the interior of North America and the lack of mountains to the north and south expose the state to incursions of bitterly cold air masses from the Arctic in the winter and warm, humid air masses from the Gulf of Mexico in the summer, causing a large range of temperatures across the state. The southern part of the state experiences cold winters and mild to hot summers, while the northern part of the state experiences frigid winters and generally cool summers with brief bouts of excessive heat.

The winter season is dominated by dry and cold air, with occasional intrusions of milder air from the west and south. The summer is characterized by frequent warm air masses, either hot and dry continental air masses from the arid west and southwest or warm and moist air from the south. However, periodic intrusions of cooler air from Canada provide breaks from summer heat.

The state has borders along Lake Superior to the north and Lake Michigan to the east, and the proximity to the lakes provides a moderating effect on temperatures for locations along the shorelines. Annual average temperatures vary from 39°F in the north to 50°F in the south. Since the beginning of the 20th century, temperatures in Wisconsin have risen more than 2°F, and temperatures in the 2000s have been warmer than in any other historical period.

MAJOR CITIES:

Middle Wisconsin	Wisconsin Rapids
West Wisconsin	Menomonie, Chippewa Falls
East Wisconsin	Marinette Harbor; Manitowoc
South Wisconsin	Madison, Milwaukee



CULTURAL ACTIVITIES



Click on these sites for more cultural activity ideas:

- <https://www.travelwisconsin.com/things-to-do/arts-culture/native-culture>
- <https://www.thecrazytourist.com/15-best-things-wisconsin/>
- <https://www.atlasobscura.com/things-to-do/wisconsin>

Cave of the Mounds – Blue Mounds
<https://www.caveofthemounds.com/>

Historic Cedarburg - Cedarburg
<https://www.cedarburg.org/>

Wisconsin State Capitol - Madison
<https://legis.wisconsin.gov/about/visit>

Olbrich Botanical Gardens – Madison
<https://www.olbrich.org/>

National Railroad Museum – Ashwaubenon
<https://nationalrrmuseum.org/>

Milwaukee Art Museum – Milwaukee
<https://mam.org/>

Water Park Capital of the World – Wisconsin Dells
<https://www.wisdells.com/>

Wisconsin Great River Road
<https://www.wigrr.com/>

Harley Davidson Museum - Milwaukee
<https://www.harley-davidson.com/us/en/museum.html>

GROCERY SHOPPING

Aldi	Piggly Wiggly
Festival Foods	Save A Lot
Jewel Osco	Seneca Foods
Pick'n Aave	Sentry Foods

Click on this link for more grocery stores:

<http://supermarketpage.com/state/WI/>



SHOPPING MALLS

Click on this link for a list of shopping malls:

<https://mallseeker.com/wisconsin-malls.aspx>

PHARMACIES

Walgreens	CVS Pharmacy
Walmart	Target
Pick N' Save	Costco

Click here to locate other pharmacies:

<https://www.goodrx.com/pharmacy-near-me/all/wi>



POST OFFICES / SHIPPING



Click here for more information:

<http://www.postofficehours.net/state/WI.html>



Click here for more information:

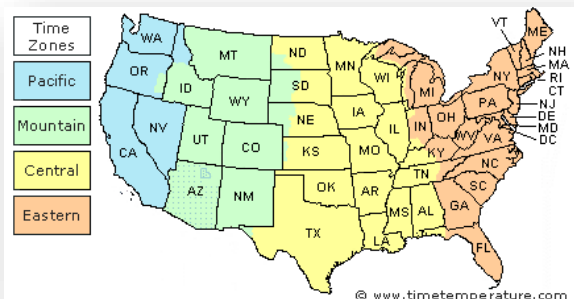
<https://local.fedex.com/en-us/wi>



Click here for more information:

<https://locations.theupsstore.com/wi>

TIME ZONES



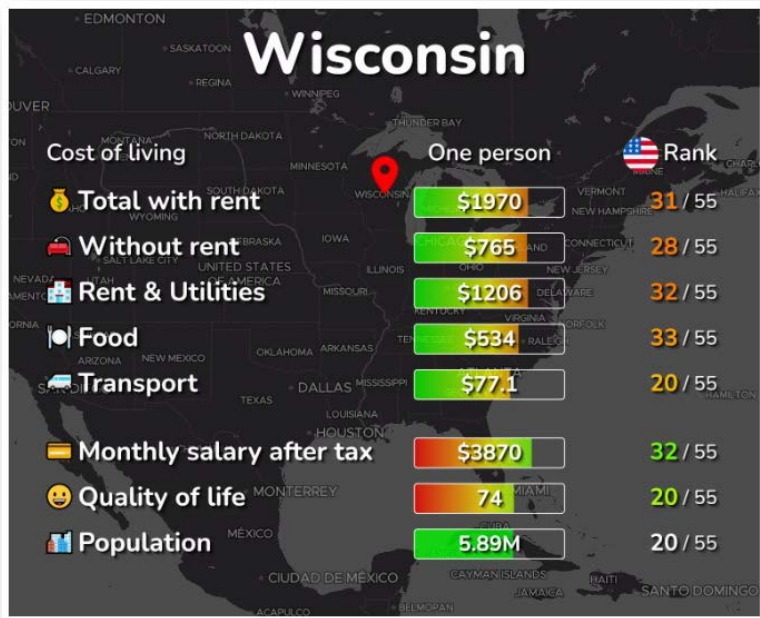
Click here for more information:

https://www.timetemperature.com/tzus/wisconsin_time_zone.shtml

Wisconsin Local Time Details

Time Zone Abbreviations	Central Standard Time - is abbreviated as CST Central Daylight Time - is abbreviated as CDT
UTC - GMT Offset	Wisconsin is GMT/UTC - 6h during Standard Time Wisconsin is GMT/UTC - 5h during Daylight Saving Time
Daylight Saving Time Usage	Wisconsin does utilize Daylight Saving Time.
Daylight Saving Start Date	Wisconsin starts Daylight Saving Time on Sunday March 12, 2023 at 2:00 AM local time.
Daylight Saving End Date	Wisconsin ends Daylight Saving Time on Sunday November 5, 2023 at 2:00 AM local time.

COST OF LIVING IN WISCONSIN



Click here for more information:

<https://livingcost.org/cost/united-states/wi>



MINIMUM WAGE

State	2023 Minimum Wage	2023 Tipped Wage
WI	\$7.25	\$2.33

Click here for more information:

<https://www.dol.gov/agencies/whd/minimum-wage/state#wi>

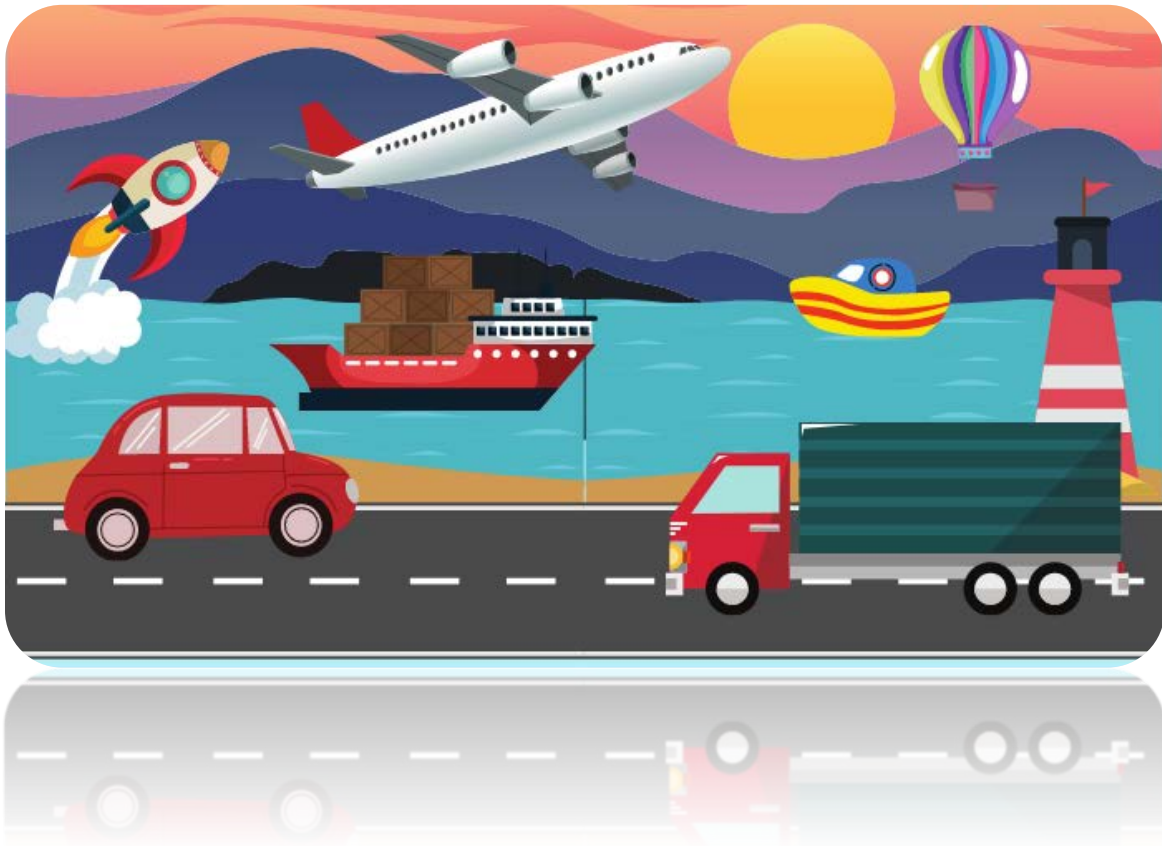
or

<https://www.dol.gov/agencies/whd/state/minimum-wage/tipped#Wisconsin>

WORKERS' COMPENSATION

Click here for more information:

<https://dwd.wisconsin.gov/wc/>



TRANSPORTATION SERVICES

Click here for more information:

<https://www.apta.com/research-technical-resources/public-transportation-links/wisconsin/>

Ride Sharing:

www.uber.com

www.lyft.com